



Winter/Spring Edition 2013



Cabal

Your Club

Patrons

Tom Couchman

Jocelyn Croad

President Michelle Parker Brien

Vice President Jane Wistuba

Secretary Jannelle Tremeneheere tremenbear@yahoo.com.au

10 Allendale St Pelaw Main



Cover: Ch Balliol Gellert Grindalwald.
Winner of the 2012-2013 Point score for
the second year in a row. Handled by
Jannelle Tremeneheere.

Treasurer To be filled

Editor Michelle Parker Brien - mbrienparker@yahoo.com

Your Committee

Ros Finch (Social Secretary)

Marcia Mulhearn (Rescue Officer)

Jane Wistuba

Claire Parker

Kerrie Taylor

Honorary Life Member

Denis Montford

The aims of the club are:

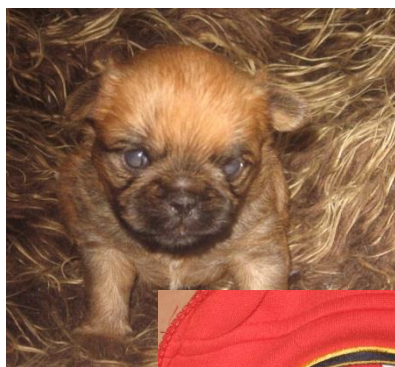
- To promote the Griffon Bruxellois and Petit Brabancon breed.
- To highlight the versatility of the breed as a loving and loyal pet, and a show and performance dog
- To promote good sportsmanship and good fellowship among members at all times
- To show respect and courtesy to all members in an atmosphere free of bullying and intimidation
- To support responsible and ethical breeding practices of Griffons
- To support and recommend testing of health issues relevant to Griffons based on genuine scientific research, both local and international.
- To provide a rescue service for Griffons
- To promote friendship and social activities among all Griffon owners
- To educate Griffon owners about grooming, training and responsible ownership
- To work in partnership with other responsible Griffon Bruxellois Clubs of Australia and internationally for the betterment of the breed

**Membership renewals are now overdue. Please renew as soon as possible if you wish to stay in the club .
Our Championship show next year will have two entry fees – one for members and one for non members**

Contents

Presidents Report	4
From the Editor	5
Secretary's Report.....	5
Dogs on Show.....	12
Health – Cleft Palates.....	14
Royal Results	21
The Queensland Griffon Club Championship Show.....	23
Golden Oldies.....	25
Sydney Royal Draft schedule for next Easter.....	25
2012 – 2013 Point Score Competition	26
2013 – 2014 Point Score Competition	30
Easter Griffon Spectacular 2014	32
Membership Application/ Renewal Form.....	35

Griffon Babies



14 days old



Puppy's Play time





Presidents Report

(This is the report presented at the AGM)

We have had a very eventful twelve months and the club can be very proud of its achievements.

The club held the first Championship Show with Shane Thomas as judge. We had a good entry of over 50 Griffons and both the BIS and Runner up BIS were awarded to the bitches. The trophy table was admired and the show committee did an excellent job in organising the show.

The committee members and some extra helpers were at the grounds from 6.30 am and worked very hard to get the rings decorated, the canteen stocked and the trophies arranged.

Another success was our display at Dogs on Show in June 2013. We again had our pink and purple theme and our breed stand was one of the most colourful. Ros and Dave Finch were able to obtain a miniature sully which enhanced the stand and was a great addition to the Parade of breeds. A number of our members were able to visit the stand and say hello, bringing their pet Griffons for a wonderful day out.

Our Point score competition was well supported by members with most point score shows getting entries of between 17 – 25 Griffons – well above the usual Griffon entry. The judges frequently expressed their delight in such a large entry. At all times, the members have shown outstanding sportsmanship and camaraderie during the point score competition. As we had heard that our club had been nick named The Country Women's Association we were pleased to have scones with jam and cream at a number of our point score shows

We had 2 Fun days scheduled over the past 12 months but unfortunately weather conditions caused them both to be cancelled. The first one was cancelled because of heavy rain and storms and the second one because of extreme heat (42 degrees) and a bush fire threat.

We probably do need to get more input from our non- showing members to find out what they would like the club to do for them. This is something that we can look at in the coming year.

Our membership fees have remained very low and we have maintained our membership numbers with approx. 70 – 80 members. It is important that members let the club secretary know if their contact details have changed, including email address as we have had several newsletters bounce back due to changes.

Despite the low fees our finances are healthy and slowly growing, thanks to the kind donations from a number of members for various fund raising events.

Finally the club would not have been able to prosper without the strong support and hard work of the many members who have taken on Executive and committee roles. We have always prided ourselves on being a friendly club and although at times not everyone has agreed, members have always been able to work together in a courteous and friendly manner for the good of the club.

The forthcoming year promises to be equally eventful; we are pleased to have engaged an overseas judge for our next Championship show which will be held on April 13th 2014 and hope to get a bigger and better entry.

Our new point score competition is well underway and already there are some promising youngsters coming through which will make it even more interesting.

In conclusion I would like to thank the Secretary Jannelle Tremenheere, Treasurer Ashley Barber, Vice President, Dave Finch for their support throughout the year.

Thanks also to the committee members, Ros Finch, Jane Wistuba, Donna Murphy, Kerrie Taylor, Claire Parker for their hard work and support for the club.

Michelle Parker Brien (President 2012 -2013)



Griffon Babies

It's my Teddy bear





From the Editor

We have had a busy time since the last newsletter- our 2012-2013 point score has concluded and a new one started, we have participated in Dogs on Show, we have had our AGM, gained approval for our 2014 Championship show judge and a number of members have been busy with some exciting new puppies.

To celebrate these puppies I have added extra photos of Griffon babies in all their cuteness. All this information and more in this newsletter

Secretary's Report *(This is the report presented at the AGM)*

The Club has had a very successful 2013 and it is fair to say this would not have been achievable without the help of our committee and club members.

We held our Inaugural Championship Show at Hillsborough Show Grounds with Shane Thomas as our judge. The show was a huge success with an entry of 50 Griffons. The trophy table was decorated in our club colours of purple and pink and looked fantastic. I would like to thank the show committee and club members who donated their time to help make this show a success and look forward to our 2014 Show.

We attended Dogs on Show at Erskine Park and our Breed stand decorated in pink and purple looked amazing. In particular the hay bales and the miniature sulky made the stand look very authentic and reminiscent of days gone by. The public were, as always smitten with our wonderful breed and it was nice to catch up with some of our pet owners.

Our Point Score competition for 2012-2013 was again very successful due to the large number of Griffons entered at these shows. We received positive comments from other exhibitors and judges were delighted to be judging such a large breed entry of Griffons. Club members should give themselves a pat on the back for their support at these shows. Congratulations to the winners and good luck to everyone for the 2013-2014 Point Score competition.

We have some exciting times ahead this year, our Championship Show will be held on 13 April 2014 and we have been fortunate to sign an overseas judge. The Sydney Royal will be held from 10 April to the 23 April with Griffon Bruxellois being judged on Thursday 10 April. We have been invited to attend the 2014 Sydney Pet & Animal Expo and we will be having a breed stand at Dogs on Show.

I would like to thank everyone for their support and invaluable contribution to our Club it has been a great year and I look forward to what next year will bring.

Jannelle Tremeneere Secretary 2012-2013



Griffon Babies

Daddy's
little
darling

And
here a
bit older



Who said I look guilty?





The Country Griffon Bruxellois Club of NSW Inc.

Minutes



The Country Griffon Bruxellois Club of NSW

Annual General Meeting 2013
28 September 2013
Hillsborough

Meeting Commenced: 12.30

In Attendance: M Parker (Chair), C Parker, M Mulhearn, J Witsuba, J Tremenheere & A Barber

Apologies: K Taylor, R Finch, D Finch, D Murphy, G O'Dell & T O'Dell

Presidents Report: Tabled

Secretary's Report: Tabled

Treasurer's Report: Tabled - \$3,043.09

All positions stood down. K Minns took the chair for the election of Executive and Committee.

Position	Person Nominated	Nominated by	Seconded
President	M Parker Brien	J Tremenheere	M Mulhearn
Vice President	J Witsuba	J Tremenheere	J Witsuba
Secretary	J Tremenheere	M Parker Brien	J Witsuba
Treasurer	To be filled D Finch to be invited	J Witsuba	M Parker Brien
Committee			
Publicity Officer	M Parker Brien	A Barber	C Parker
Rescue Co-Ordinator	M Mulhearn	J Tremenheere	A Barber
Social Secretary	To be filled R Finch to be invited	M Parker Brien	J Witsuba
Committee Member	A Barber	C Parker	M Mulhearn
Committee Member	K Taylor	M Mulhearn	J Tremenheere
Committee Member	C Parker	J Tremenheere	M Mulhearn
Show Committee			
Show Manager	J Witsuba	M Parker Brien	J Tremenheere
Show Secretary	C Parker	J Tremenheere	M Mulhearn
Trophy Secretary	A Barber C Parker	J Tremenheere M Parker Brien	J Witsuba M Mulhearn
Patron	T Couchman	J Tremenheere	J Witsuba
Patron	J Croad	M Parker Brien	J Tremenheere

Meeting Closed 1.10 pm



The Country Griffon Bruxellois Club of NSW

General Meeting 28 September 2013 at Hillsborough Show Grounds

Opened: 1.10 pm

In Attendance: M Parker Brien, J Tremenheere, C Parker, M Mulhearn, J Witsuba & A Barber

Apologies: R Finch, D Finch, K Taylor, D Murphy, G O'Dell & T O'Dell

Treasurers Report: Balance as at 27 September \$3,151.14 moved J Witsuba, Seconded M Mulhearn.

Outgoing Correspondence: Letter to The Griffon Bruxellois Club of Queensland congratulating them on a successful 2013 show.

Incoming Correspondence: Letter from M Foster with sub contracts for 2014 judge

Judge for 2014: The contracts have been signed for the Judge for 2014 The Country Griffon Bruxellois Club of NSW speciality and forwarded to Marilyn Foster. The judge will be paid the sum of \$600.00 on the day of the Show.



Report for Dogs on Show: The day was yet again highly successful with our wonderful breed very popular with the public. A big thanks to all of our members who attended and helped out on the day. A Barber moved that we support Dogs on Show next year, seconded M Mulhearn. Unanimous

Fun Day: to be postponed for the summer months due to extreme weather conditions. Moved J Witsuba, seconded C Parker. Unanimous

Show Business: Sub Contract for the Judge has been signed and she is now officially confirmed for our 2014 Speciality Show. The Trophy mangers will have suggestions for trophies for our show to be presented at the next meeting

Show Venue: Claire has enquired in regard to the availability of the rotunda at Erskine Park and was advised that it was not available due to Judges Training. The only ring they could offer us was the German Shepherd ring which has no amenities at a cost of \$75.00.

Claire moved that due to the success of our last show and the fact that we will have amenities available to us at a cost of \$50.00 we hold our 2014 show at Hillsborough. Seconded J Witsuba. Unanimous

J Tremenheere moved that we keep the same donation process for our Trophies as last year. Seconded A Barber. Unanimous

Show Committee to prepare a list of suitable options for trophies to be presented at our next meeting at Southern Highlands so that members can discuss and vote. Moved J Wistuba, seconded J Tremenheere. Unanimous

J Tremenheere moved that the entry fees for our 2014 show be as follows:

Member: 1st entry \$20.00 all other entries after that \$10.00

Non Members: 1st entry \$30.00 all other entries after that \$20.00. Seconded A Barber. Unanimous

We will require a person who will not be exhibiting on the day of our show to pick up the judge from Sydney and return her to Sydney. The club has agreed to cover fuel costs if required, Claire and Jane to follow this up further.

Starting time for the Show will be 10.00 am this will give the Show Committee and any members who want to help out time to set up.

Classes will be the same as last year however we will not be holding pet classes.

A present will be purchased for the Judge in the Australian Theme.

Next Meeting will be held at Southern Highlands in the lunch break.

Meeting Closed 1.40 pm

More Griffon Babies





Griffon Corner

Vale Brian Higgins Sad news from the UK regarding the death of Brian Higgins. He was the husband of Maureen Higgins and together they had the well known Jaydean Griffons, best known for their black roughs. He died on the, 14 August after suffering for some time with emphysema. He had long been an active member of the Northern Griffon Bruxellois Club, serving on the committee and he gave CCs in the breed. More recently he had been the one staying at home and caring for the Jaydean dogs whilst Maureen attended the shows. The funeral was held Friday 23 August at Pontefract Crematorium. He leaves Maureen, son Jason, daughter Louise and three grandchildren. We extend our deepest sympathy to Maureen and her family.

Congratulations to **Terri Odell** and her young girl **Nagpuni**



Midnight Mischief, who has been on a roll since she was in Baby Puppy classes. At the recent Spring International Shows at Hillsborough she was entered in 5 shows and won three 'Best Minor



Puppy in group' and two 8 point challenges. Midnight is only 7 and a half months of age and already she has a total of seven classes in group. The two photos show Terri and Midnight with two of the international judges who awarded her the Minor in group awards.

Puppies- Entries at shows have been down a little lately as a number of people have had litters of puppies and have stayed at home to care for their babies. After very few litters last year it has been good to see a number of quality pups born.

Ros and Dave Finch of **Rosndae Griffons** had one dog pup from **Ch Rosndae Charlie Brown** out of **Rosndae Sugar Plum Princess** – shown here with his Mum watching closely at 5 weeks of age.



Ch Balliol

Dolly Dimple, produced one little girl pup, sired by **Ch Balliol Gellert Grindalwald**, shown here with her mother in her decouped whelping box.



Jannelle Tremenheere had her first ever litter for her new kennel prefix, **Nevaending**. Mother, **NZ Ch Toi Toi Dance N Shout**, produced two pups, a boy and a girl to **Ch Balliol Gellert Grindalwald**. Fiona Erskine of Ffire photography took this lovely photo of them at 5 weeks – amazing that they stayed still for long enough to take the photo.

Kerrie Taylor of **Kehael Griffons** has just recently had cause for celebration when her Black and Tan

girl, **Keheal Black Pearl** successfully free whelped a litter of three, 2 girls and a boy, to **Ch Cricklewood Night of Magic in Paris**. At the time of writing they are not quite a week old but are drinking well and putting on weight and Kerrie tells me that Pearl is a very calm and contented mother. In the photo here you can see 3 very tiny new babies with their mother.



As I write I know that **Ros and Dave Finch** are anxiously awaiting the birth of the first litter from Annie, Rosndae Naughty but Nice, who has been mated to Ch Rosndae Charlie Brown.



Terri Odell has also had great success in Rally Obedience with her young Griffon, Coco- **Nagpuni Coco Christobelle**. On September 25th Coco achieved her third pass at Rally-O Novice & also her title at just under 11 months of age. Terri is now working on the steps and moves for Dancing with Dogs as Coco shows a real aptitude for this and has already mastered a number of positions including spins in both directions, weaving between legs, standing on her hind legs and turning, placing her front feet on Terri's feet and walking with her. Coco loves it and has a smile on her face the whole time.

The mother of Coco, **Ch Nagpuni Brooklyn Babe CCD RA**

achieved her Rally-O Advanced Title on September 12th. This

level of Rally Obedience is all off lead work. Terri writes *A great achievement for a Griffon, Border Collies, German Shepherds & Poodles are the usually better suited breeds for these trials, so very proud of her.* Obviously Brooklyn has passed her ability to her daughter.

These 2 photos show Brooklyn on her way to her title – flying Griffon!!



The New Zealand National Show has recently been conducted and the Best of Breed and Dog Challenge went to **Cricklewood a Night in Paris** owned and bred by club member Sandie Feaver and David and Julie Fifield and handled by Fern Feaver. Congratulations to everyone on a great result from the Junior class. Other results were:



Runner Up BOB and Bitch Challenge	Yappenbach Burlesque – A Rowsell
Reserve Challenge Dog	Yappenbach Papparazzi – A Rowsell
Reserve Bitch Challenge	CH Hyjinx Life of Reillee – A Jenkins

Terri and Grant Odell's daughter Kellie has been in the spotlight again at the race track. Kellie has been highly successful in the Fashions in the Field competitions at various races in both Australia and New Zealand. Her success is continuing as in the past month she has not only won at Cairns she has also won at the Newcastle Races and is soon to compete again at Rosehill.

Terri's son also competes and has had success as well and as you can see from the photo they scrub up well. We wish them luck in the future competitions.



We have a few members who have not been well over the past few months.



Marcia Mulhearn has been stricken with *Helicobacter pylori* (see pictured) which is a bacteria which gets into your stomach lining and eats it making you very sick. It is caused by a number of things such as eating food that is contaminated or by not washing hands and it can be passed on from cats and dogs etc. Poor Marcia who washes her hands constantly has somehow picked it up from somewhere and has had a 6 week battle on massive doses of antibiotics and other medications. She has now finished the medication and the Doctors are hoping her body will be able to continue to fight this very nasty bacteria. Our best wishes are with you Marcia.

Also on the sick list is **Jackie Macdonald**. Jackie and her husband **Brian**, were founding members of the club and have had some bad luck over the past few years with Brian requiring a hip replacement and Jackie suffering long term damage and multiple operations from a broken wrist. Now Jackie has been diagnosed with a more serious health worry and has recently begun treatment. We sincerely hope that the treatment is successful and Jackie is up and about as soon as possible.

Jane Wistuba has recently acquired a Chihuahua baby, who thinks he is a Griffon and she has been having some fun with him at shows recently. Paddy, (Cairnford Luck of the Irish) started his run of success with a first place in sweepstakes at the Spring International Shows at Hillsborough at the end of September. He topped it at Bathurst shows a week later when he won Baby in Group on day one and Baby In Show the next day. Jane's Griffon, Cider (Ch Raweke Apple Cider) was also shortlisted for Group on the same day so a very successful weekend.





Congratulations to **CH Troubadour Pricklepants**, owned by Diana Norman and Tim Mills and expertly prepared and handled by **Kerrie and Emily Bell**. He won Runner Up in Show at the ACT Toy Club Show on October 6th under Mr A Jones (Tas).

News from the UK- Howard Ogden has been a busy man. Fresh from judging at the Queensland Griffon club show he returned to the UK to also judge the Northern Griffon Bruxellois Club show at the end of September. The entry was 70 +. Best in Show went to **Millbone Ginger Bread** co owned and handled by Steven Seymour. Alison Price had success with **Liamford Eye Candy** [the last pup



Millbone Ginger Bread

The third shortlisted bitch was Ch Marquant In Your Dreams handled as usual by Lionel Prouve. Alison's new boy Marquant Love Me Tender aka Elvis at just 6 mths was at his first show and won Best Puppy in Show despite being very naughty.




Ch Marquant The Heart Throb

Laurie Tremenheere now has a bikie Griffon in the family. Apart from his Griffon, **Novello**, Laurie's other love is his big Triumph touring motorbike.

In this photo Novello is shown strapped to Dad but he has improved on this since the photo was taken

Novello now has his own enclosed basket strapped to the bike and when Laurie and Steph go riding Novello goes with them. He is one cool Griffon. He just needs his leathers and a helmet to complete the look.



Liamford Eye Candy



More Griffon babies



Dogs on Show



The Dogs on Show day, showcasing purebred dogs to the public, was held in June along with a dog show, at Erskine Park.

Our club once again had a breed stand, colourfully decked out in our club colours of pink and purple.

Ros and Dave Finch had a miniature sulky which became the centrepiece display and Jane Wistuba brought along a number of bales of straw, to demonstrate how Griffons originated as stable dogs and graduated to travel on top of Hansom Cabs with the Brussels coachmen.

The club was able to sell a range of products donated by our members; Sue Brewin had donated handmade and painted ceramic Griffon items including door stops, decorations, figurines etc. Shirley Brien had knitted more colourful doggy jumpers which one person even purchased for her cat!

Some of the items for sale



We held a doggy product raffle with members donating various dog products including a soft bed, toys, bowls, food, jumpers etc. We had so many donations that we were able to make two prizes and the raffle was popular with the public providing some valuable fundraising.

As usual the Griffons attracted a lot of interest and Ros Finch had made some very glamorous



coats in pink and purple for them to wear.

The club again participated in the Pageant of Breeds parade and Ros dressed her Griffons up as a Griffon coach driver and his lady passengers so that they could travel on the sulky in the parade.

Boston the coach driver and his elegant Griffon passengers



Boston the Coach driver

The parade saw a large number of Griffons and members all in pink and purple and they made an eye catching sight in the procession. The Griffons of course took it all in their stride and enjoyed the fuss and attention.

Because of the support we had from our members, we were able to show both rough and smooth

Griffons and also black and tans as well as reds.



The dog show that was also held on the day saw Ch Gellert Grindalwald win DCC and BOB and Rosndae Naughty but Nice win BCC and Runner Up BOB.

The atmosphere of the day was very relaxed and the weather was kind with warm sunshine, an improvement on the previous year's wet and cold day.

Thanks go to Ros and Dave Finch, Jane Wistuba, Marcia Mulhearn, Kerrie Taylor who came despite having been unwell and Jannelle Tremenheere, for their help on the day.

Some more photos from the Dogs on Show Day.

Thanks to Dave Finch for these photos



Health – Cleft Palates

One of the fears that any breeder of Griffons has is that of having a puppy with a cleft palate. In most cases the new born pup has to be humanely put down immediately after birth and there is nothing more heartbreaking than having to put down a perfect little puppy due to a cleft palate. Only in a very limited number of cases can the pup be saved to go on and live a normal and functioning life.

There is much conjecture on the causes of Cleft palates and even vets cannot agree on this. Some believe that it is hereditary, others believe that there only a small element or inheritance and that there are many other factors which cause it. Certainly it is more common in breeds with a flatter face but clefts have also appeared in all different breeds with longer noses including Rhodesian Ridgebacks and PBGVs.

There has been a documented case of one particular mating of Pekinese which produced all cleft palate puppies. This exact same mating was repeated and produced 4 healthy pups with no cleft palates.

There are lines of dogs that have produced healthy pups with no cleft palates and then unexpectedly produce one.

This lack of consistency is one of the reasons why the causes cannot be specifically identified but it is believed that environment also plays a large part in this development.

The following article by Fred Lanting, taken from this website is very useful in discussing cleft palates and their causes. I hope it will be useful to breeders.

<http://www.lowchensaustralia.com/health/cleftpalate.htm>

BIRTH DEFECTS: CLEFT PALATE WHY AND WHEN

by Fred Lanting

Fred Lanting is an internationally respected show judge, approved by many registries as an all-breed judge, has judged numerous countries' Sieger Shows and Landesgruppen events, and has many years experience with SV. He presents seminars and consults worldwide on such topics as Gait-&-Structure, HD and Other Orthopedic Disorders, Anatomy, Training Techniques, and The GSD. He conducts annual non-profit sightseeing tours of Europe, centred on the Sieger Show (biggest breed show in the world) and BSP. Check out his website: www.MrGSD.com

I hope that you never have a litter with cleft palates. But if you do, this may explain the cause of at least some cases.

Let's start at the beginning, with a short review of the birds and the bees. The sperm cell, with half the chromosomes needed for a new pup (and a little less than half the DNA it will get) penetrates the ovum (egg) and triggers cell division, with the multiplying cells having the right number of chromosomes, and characteristics from both families. After a while, these cells are seen to start segregating some in groups that will later form intestines, some groups that will become heart tissues, others destined to end up as reproductive organs, etc.

It takes a while, so part of the way through the process, you might have a club whose members act alike for a time, but then, like Southern Baptists, split into splinter groups that become increasingly different from the cells whose division formed them. Some chromosomes in any one group go dormant, while others take over the job of activating the DNA and RNA that determine whether the cells are skin or hair cells, whether they express pigment, and a multitude of other inherited things. Chromosomes that deal with how a dog barks do not function in cells that make up the skin, even though all the chromosomes with their genes are in all the somatic body cells.

After the first few divisions of the fertilized egg, the mass is called an embryo. Like a seed or acorn that contains all the leaves, bark, roots, growth patterns, disease resistance, and more, the animal embryo can be thought of as the grown dog and its descendants in future tense.

In some lower animals, the segregation of tissues in the embryonic urogenital tract never is completed, the way we understand it in mammals, where the genitals are near but distinct from the urinary organs. You can think of them as having an interrupted or halted development compared to the higher animals.

However, the closer to the time of conception and early division, the less the differences in embryos of worms, frogs, Chihuahuas, water buffalos, and pterodactyls. The differences become apparent as the cell groups continue to specialize, which is an ongoing process up to and even after birth.

Sometimes something goes wrong during the embryonic development of structures on their way to completion. If development is halted or damaged, the part of the body that should be normal later, just isn't.

The example we are looking at here is the development of the central dorsal line of the body. Early embryos in that area look a little like flat worms or pancakes, and as they (we, too) grow, the edges curl or fold up and are supposed to unite along the top.

Ever make raviolis or apple tarts? You fold the edges of the pastry so that the filling is enclosed, and you pinch the dough together in order to fuse it and keep the contents from falling or leaking out, until you can bake it. The spinal cord is the ravioli filling, and the finished vertebral column is the baked shell. If the phone rings before you pinch the dough, and your darling toddler daughter puts the half-completed job into the oven and cooks them before you get back, the contents are exposed. A similar thing can happen in the moulding of the body if embryonic development is interrupted. Premature babies are at higher risk because some of them haven't finished the process of closure before they are popped into the oven known as the world outside of the womb. Incomplete frontal skull bones, spina bifida, and hemivertebra are examples of the defects that can occur along the dorsal midline.

Midline closure defects are expressed in a variety of ways; in German Shepherd Dogs, I have seen incomplete closure to the midline of the scalp, incompletely formed tails, skull defects, spina bifida, and cleft palates.

I believe them to be related in most cases. Sometimes other midline abnormalities are found; some would include umbilical hernias, and although they may be an embryo defect of another sort, I doubt those are related to the others.

Cleft lip (harelip) is probably caused at a different time during gestation than cleft palate or the other disorders named above. As we say in good obedience training and many other things, "Timing is everything."

What is a Cleft Palate

Cleft palate is a condition in which, for genetic and/or environmental reasons, the hard surface of the roof of the mouth and the softer palate behind it fail to close completely.

The first sign something is wrong (if you don't examine your pups immediately after delivery) is usually milk bubbling out the nose when the newborn attempts to nurse.

In addition to strictly genetic cause, there are numerous other cases of **environmentally-mediated** cleft palate.

- It is a frequent defect found in offspring of diabetics.
- It has been produced experimentally by vitamin A imbalance whether too much or too little

- It is often a result of poisons and steroids taken or produced by bitches in the first three weeks of gestation. Such corticosteroid production increase frequently can be associated with unsound character and/or a severe scare (fright).
- In canines, a deficiency of vitamin B-12 has also been identified as a cause.
- Antihistamines given early in pregnancy, at least in some doses, are also suspect.
- Viral infections at that stage, or certain other chemicals have also been determined to cause cleft palate.

I believe natural or synthetic hormones and steroids are potentially very dangerous if given to bitches during pregnancy; most of the time, cleft palate is a steroid caused birth defect. Cortisone and similar steroids can also facilitate spontaneous bleeding, which is more perilous during whelping and surgical convalescence than at other times.

Possible Problems In The First Three Weeks

While some deaths and other difficulties are genetically controlled or otherwise out of the breeder's power to prevent, many are avoidable if the midwife/pediatrician is knowledgeable and careful. Generally speaking, if you pay heed to the subjects of genetics, nutrition, sanitation, disease prevention, and management, you'll increase your chances for a normal, healthy, successful litter growing to adulthood.

Start with the bitch, for a healthy female will make for a healthy litter in most instances.

- Some drugs or excessive vitamin A administered during pregnancy have been identified as causing cleft palate, reduced litter size, mummified fetuses, and nervous system disorders, as well as eye, ear, and heart defects in the pups.
- Exposure to too much carbaryl (Sevin is the most common tradename) insecticide may produce deformities in intestines and abdominal-thoracic fissures; other insecticides may cause skeletal deformities in pups if the pregnant bitch has been exposed to very high levels.

Be sensible in your use of these, and your dam will likely be safe. A friend of mine tragically dosed his bitch with 10% Sevin dust (the concentration used for garden pests) instead of far less of the 5% dust used for fleas and ticks, when she was newly delivered of a litter of pups. It killed both her and all of the puppies. It was the wrong time to use it, and he used far too much.

During the first week of a pups life, the combination of the dam's carelessness and failure to lactate account for the greatest losses in neonatal deaths, and the latter may be partly due to the breeder's carelessness in the area of sanitation and prevention of infection.

Statistically speaking, the less common causes of death in that first week include cleft palates, which are probably found in less than 3 percent. Such pups either are euthanized on the second day or die soon after from aspiration pneumonia due to the milk they suck going through the nasal passages into the lungs.

Harelip is a split in the front portion of the palate, extending up the centre of the front lip between where the middle incisors would later come in, and as far as the nose bulb in most cases. It is caused by a disruption in the embryo development at a slightly different time than cleft palate is.

Sometimes, if the psycho-biochemical disruption has continued for a longer period of time than an instantaneous trauma, you may find both conditions in the same pups. You may have met people with both. Although it is surgically treatable in humans, it is not, or at least is not worth the effort, in dogs.

Brief Selections from Case Histories

Several years ago an Ohio dog club member had a small litter of puppies born with cleft palates. One puppy had the cleft palate alone, another had the malformed lip/mouth, and another puppy

was born with all its internal organs outside its body. This is an instance of where midline closure defect is expressed on the ventral portion of the dog as well. All pups in the litter died.

She found out, through some detective work, that it was due to a chemical ingested or inhaled. Nothing in her house or yard would have caused this and so she asked around the neighbourhood if anyone sprayed any yard chemicals (pesticides, insecticides, herbicides). Nobody did, or at least in her neighbourhood.

She finally figured out that when she was visiting her son at a new neighbourhood park that her dog had been exposed to chemicals sprayed on the grass, and she then found out that a neighbour of his across the street had in fact had the famous-name company spray their yard, but took the flags down as soon as they were finished. So her dog was exposed to the lawn chemicals by absorption through the very porous pads as well as possibly by inhaling for a day or two. This was at the critical point in her pregnancy and pups' embryo development when this exposure would most likely cause this problem. The first trimester is the time of greatest risk.

I once bred a bitch who was hard as nails to a great show dog named Hein, noted for pigment and hips, and my litter had one somewhat flighty, spooky bitch pup whose temperament characteristics did not immediately show themselves.

When that bitch grew up, the owners bred her. During the first trimester, this bitch had a sudden and traumatic fright. Even though it lasted only a few minutes, and her nervousness was at a peak for a few hours or more, the repercussions followed at parturition. Her litter all were born with cleft palates. A couple had harelip as well. All were euthanized. She never had any pups with cleft palate afterwards. The male that I bred my bitch to was of normal temperament, but produced more than his share of nervous offspring. One all-black son of his, bred by the owners and named Phantom, produced many spooky pups and a great deal more were produced by his offspring, in turn.

Such changes from the norm of midline closure are possible through that psychophysical route, such as a bitch in that stage of pregnancy being badly frightened or startled. Her own hormonal chemicals act the same way that administered steroids could. Of course, the always-flighty or nervous bitch is far more susceptible to such an unusual event than a stable bitch is.

When I had mentioned this observation in a magazine article, someone wrote to me- "How could that theory account for the marked association of facial cleft with brachycephaly?"

Short-faced bitches are more nervous and flighty perhaps? Or could it be genetic, I wonder!

No, as I had written, there are more causes than this one.

Nervous temperament can be and usually is very strongly genetic, as would be any unusual or "touchy" reaction to steroidal imbalance. Plus, brachycephalic dogs, however lovely in the eyes of owners, are short-faced because of abnormal pituitary/hypophysis glands. This "master gland" affects all other endocrine glands and all hormones, directly or indirectly including those that affect cleft palate.

Perhaps the defect that causes a Bulldog face with pushed-in nose and undershot jaw is side-by-side with the defect that directly or indirectly interferes with normal midline closure in the embryo just before birth or earlier in gestation.

Although kennel-blind fanciers of Lhasa Apsos and other short-faced breeds have claimed that this opinion is not supported by anything we know about endocrinology or genetics, I have studied enough biology and genetics to disagree.

It is generally assumed that the growth patterns such as shape of head (some breeds such as Saints, Newfies, etc. retaining "juvenile" looks) are related to the function of the pituitary/hypophysis, and growth hormones interacting with other hormones. I learned a long time ago that the

pituitary/hypophysis of breeds with Pug/Peke/Bulldog-type faces are physically different than those in breeds with "ancestral" type heads (GSDs, wolves, Malamutes, Spitz, etc.)

I leave it up to the naysayers to come up with a better explanation as to why these brachycephalic breeds have the look of a dog that ran 35 mph into a brick wall.

A Westie breeder wrote to me: "We also one time had a whole litter of clefts. There was no history of clefts in either the line of the dog or the bitch. In fact, we had bred both sire and dam previously with no clefts at all. We spoke to various veterinarians about this. And they determined it was from a viral infection that I had when the puppies were in the critical period of gestation"

Could be- Environmental irregularities can make for somatic irregularities. That same correspondent later wrote, Thank you! This explains the cleft palate puppy we had last year after our two bitches got into a fight. Dusty was at the critical time for palate development. And my other bitch lost her whole litter! Hormones! Ugh!

To avoid midline closure defects, there are several steps you should take.

- Naturally, the first is to be careful about your choice of breeding pairs.
- After insuring the genetic component as much as feasible, make sure that the environment is one that promotes good health and avoids toxins and psychological traumas. Don't let your bitch roam, especially during the first 3 weeks of pregnancy. Make sure you do everything to favour full-term gestation.
- If you have brachycephalic (especially toy) breeds such as Pokes, Pugs, Bulldogs, Bostons, and the like, research the ancestors and siblings for any problems before you breed your own dog.

CAUSES OF CONGENITAL CLEFT PALATE

There are several possible causes for congenital cleft palate:

Genetic cause

An hereditary basis for the disease is suspected for congenital clefts but the mechanism has not yet been determined. Any such genetic trait is thought to be multifactorial recessive, polygenic and dominant with partial penetration.

Excess vitamin A intake during pregnancy

In 1967 Wiersig and Swenson reported that 125,000 IU of Vitamin A per kilogram body weight given to Beagle bitches on days 17-22 of gestation resulted in cleft palate developing in their puppies.

Vitamin A is an essential nutrient for normal growth and defects in bone growth are seen with insufficient as well as excessive dietary intake. Vitamin A has a controlling influence over both the osteoblasts and osteoclasts in epithelial cartilage and so there is a rational explanation as to why excessive vitamin A intake might result in cleft palate.

In addition, commercially prepared complete pet foods contain more than sufficient available vitamin A yet breeders and owners frequently supplement their pet's ration with vitamin supplements

High vitamin A content is also a feature of many natural food sources including liver and fish oils. Cod liver oil is a very popular nutritional supplement with pet owners and it contains 18000mg per 100ml (4000 IU per gram). Some vitamin injections contain as much as 500,000 IU of vitamin A per ml.

Cortisone

Administration of cortisone during pregnancy can lead to the development of cleft palate in the fetus

Hydroxyurea

Administration of the cytotoxic drug hydroxyurea (hydroxycarbamide) is reported to cause cleft palate.

Acquired cleft palate is common following falls from a height, and less commonly following road traffic accidents.

Cleft Palate or Cleft Lip Complex, Occlusal Anomalies, Tongue Anomalies

Cleft Palate or Cleft Lip (Harelip) Complex: This is due to a disturbance of the processes that form the jaw and face during embryonic development. Cleft of the lower lip is rare and usually occurs on the midline. Clefts of the upper lip, usually at the junction of the premaxilla and maxilla, may be unilateral or bilateral, complete or incomplete, and often are associated with clefts of the alveolar process and palate. The defect may also involve the palate alone.

Developmental anomalies affecting other organ systems can occur in ~8% of affected dogs and cats. The defect commonly occurs with other defects in large animals as well, such as arthrogryposis, which is inherited in a simple autosomal recessive manner in Charolais cattle.

In small animals, incidence is higher in the Beagle, Cocker Spaniel, Dachshund, German Shepherd Dog, Labrador Retriever, Schnauzer, Shetland Sheepdog, and Siamese cats.

Brachycephalic breeds can have up to a 30% risk factor.

In large animals, cleft palate/lip complex has been reported in cattle, sheep, goats, and horses. The primary etiology is hereditary, although maternal nutritional deficiencies, drug or chemical exposure, mechanical interferences with the fetus, and some viral infections during pregnancy have also been implicated.

Ingestion of toxic agents may also play a role; for example, ingestion of lupines (*Lupinus sericeus* and *L. caudatus*) during the second and third months of gestation in cattle can potentially result in "crooked calf disease," of which cleft abnormalities may be a component.

Initial signs include difficulty suckling, dysphagia, and evidence of milk dripping from the nostrils when the newborn attempts to nurse. Respiratory infection due to aspiration of food is common and a grave consequence with a poor prognosis. Examination of the oral cavity generally readily reveals the defect, except in foals having only a cleft of the soft palate that may be difficult to see.

Care of Cleft palate offspring

Initial management requires intensive nursing care, including hand or tube feeding to ensure daily nutritional and caloric requirements are met, as well as the occasional need for appropriate antimicrobial therapy to treat for secondary infections of the rhinarium or lower respiratory tract.

Surgical correction is effective only if the defect is small and is usually done at ~6-8 wk of age in small animals, before their general health is compromised. Various surgical techniques, ranging from simple closure to the need for sliding grafts or prosthetic implants, are used, depending on the severity and location of the defect.

More severely affected animals may require multiple surgeries for successful correction. Surgical repair should be attempted only after ethical questions have been addressed, and the affected animal should be surgically sterilized or removed from breeding stock to prevent reproducing the anomaly in future offspring.

Occlusal Anomalies: Brachygnathia (overshot, short lower jaw, or parrot mouth in horses) is manifest when the mandible is shorter relative to the maxilla. It can be found to varying severity and incidence in all species of animals.

In cattle, it is inherited as a polygenetic factor and can be associated with other anomalies such as impacted molar teeth and osteopetrosis (Osteopetrosis) in Angus calves and Simmental cattle, or with chromosomal aberrations such as trisomy, which is lethal.

In small animals, mild forms may be of no clinical significance; however, more severe forms may result in trauma to the hard palate or the restriction of normal mandibular growth secondary to erupting adult mandibular canine teeth. Diagnosis is through careful oral examination.

Treatment varies from none to various orthodontic or endodontic procedures, depending on severity. In small animals, the mandibular canine teeth are often removed or shortened, with concurrent pulpotomy or root canal.

A range of occlusal defects in sheep, from brachygnathia to mandibular aplasia and agnathia, is reportedly inherited as a simple autosomal recessive. Craniofacial dysplasia of Limousin cattle is characterized by a convex profile of the nose, short lower jaw, deficient ossification of frontal sutures, exophthalmus, and a large tongue; it is thought to be due to homozygosity of a simple autosomal recessive gene.

Prognathia (undershot, or monkey or sow mouth in horses) is found when the mandible is longer relative to the maxilla. It is identified on oral examination by finding the mandibular incisors in contact with or rostra to the maxillary incisors.

In brachycephalic dogs and Persian cats, it is considered a normal breed characteristic. Despite being seen to varying degrees, it rarely requires any specific treatment.

Tongue Anomalies: Ankyloglossia or microglossia refers to incomplete or abnormal development of the tongue. It is often referred to as “bird tongue” in dogs and may be a component of the fading puppy syndrome. Affected puppies have difficulty nursing and do poorly. Oral examination reveals missing or underdeveloped lateral and rostral thin portions of the tongue that result in prehensile and motility disturbances. It is generally lethal.

LINKS TO ARTICLES ON OTHER SITES

- [Folic Acid, Cleft Palates and Whelping Problems](#)
- [Cleft Palate and Vitamin or Fish Oil Supplements](#)
- [Congenital Cleft Palate and Vitamin A](#)
- [Soft and Cleft Palate Problems in Dogs](#)
- [Cleft Palate](#)
- [Cleft Palate Puppies](#)
- [Cleft Palate](#)
- [Cleft Palate in Cocker Spaniels](#)
- [Cleft Lip/Palate](#)
- [New Cleft Palate Treatment in the Works](#)
- [Cleft Palate or Cleft Lip \(Harelip\) Complex](#)
- [Cleft Palate in Puppies](#)
- [What is Cleft Lip/Palate?](#)
- [How Are Defects Inherited?](#)
- [Care and Feeding of Cleft Palate Puppies](#)
- [Genetic Diseases and Problems That Run in Breeds](#)
- [Birth Defects: Cleft Palate Why and When](#)

Royal Results

The Royal shows have all been held with Brisbane in August and Adelaide and Melbourne Royals in September. Due to the large distances the entries were varied and the results rather mixed.

The first of the Royals **Brisbane** saw an entry of 39 Griffons and BOB and Best In Group went to Sup Ch Statuesque Pumpernickel owned and handled by Wendy Baker. Tzani Tag A Long Bunny owned and bred by Norman & Mills won Baby Puppy in Group. Full results are below

DOG	BITCH
Baby Puppy Dog	Baby Puppy Bitch
Norman D K & Mills T TZANI TAG A LONG BUNNY 1	JONES, CAITLYN CAMPIONECANI MAGNIFICA 1
JONES, CAITLYN CAMPIONECANI ALFONZO 2	Norman D K & Mills T TZANI TREACLE BUNNY 2
Norman D K & Mills T TZANI TIGGER BRAT BUNNY 3	Minor Puppy Bitch
H. Kubo & J. Maddock AMANECER JUAN CARLOS	Hollingshead, Liz GIRRIGIRRI MISS TESSIE GILBERT 1
Puppy Dog	Puppy Bitch
Thomas, Shane SIBERMOON DOMINANCE Absent	Mitchell, Iain GRIFFONSBURG MISS VIRGINIA 1
Thomas, Shane RAWEKE JACK DANIELS Absent	Bell, Kerry and Emily TZANI RHODA DENDRON 2
Junior Dog	Schluter, Janet ROXBUD BON BON
Bell, Kerry and Emily TZANI MR MAGOO 1	Junior Bitch
Mr I & Mrs L Mitchell CH. TZANI NEDDIE SEAGOON 2	Thomas, Shane Ch Nouveau Demonstration (imp NZ) 1
Ellis, Edward RAVENSPUR ROYALHERITAGE(AI)	Schluter, Janet BONZABULL MRS TIGGY WINKLE 2
Intermediate Dog	Lacey, Karla TZANI OLIVE OYL 3
Power, Bridget WITCHGRIFF BEAR GRYLLS 1	Intermediate Bitch
Bell, Kerry and Emily CH. TROUBADOUR PRICKLEPANTS 2	H. Kubo & J. Maddock CH. AMANECER QUEEN OF ROSES 1
Australian Bred Dog	Stewart, Sally TROUBADOUR POISON IVY 2
JONES, CAITLYN CH. WITCHGRIFF REDMOND 1	Mitchell, Iain CH. TZANI JACKI WINTER 3
Stewart, Sally CH. TROUBADOUR ZURGS HEIR 2	Norman D K & Mills T CH. TZANI LOLA BUNNY
H. Kubo & J. Maddock CH. AMANECER ASAHI SUPER DRY 3	Power, Bridget WITCHGRIFF RED POPPY
Open Dog	Australian Bred Bitch
Gemcourt Kennels SUP.CH. STATUESQUE PUMPER NICKEL 1	Norman D K & Mills T CH. TZANI ISADORA DUNCAN 1
Diana Norman & Tim Mills UK. CH. DONZEATA ROYAL TWEED (IMP UK) 2	Open Bitch
Thomas, Shane CH. NOUVEAU DOMINICAN (IMP NZL) 3	Power, Bridget CH. STATUESQUE BETSY BUTTONHOLE 1
Thomas, Shane SUP.CH. TOITOI NORTH'N' KIWI (IMP NZL) Absent	Stewart, Sally CH. TZANI BRIER ROSE(AI) 2
CHALLENGE DOG Gemcourt Kennels SUP.CH. STATUESQUE PUMPER NICKEL 1	H. Kubo & J. Maddock AM. CH. TREYACRES TIARA OF HOMESTEAD (IMP USA) 3
RESERVE CHALLENGE DOG JONES, CAITLYN CH. WITCHGRIFF REDMOND 1	Thomas, Shane CH. NOUVEAU DRAMATIC (IMP NZL) Absent
BEST BABY PUPPY DOG Norman D K & Mills T TZANI TAG A LONG BUNNY 1	Norman D K & Mills T CH. TZANI HYACINTH BUCKET
	CHALLENGE BITCH H. Kubo & J. Maddock CH. AMANECER QUEEN OF ROSES 1
	RESERVE CHALLENGE BITCH Thomas, Shane Ch Nouveau Demonstration (imp NZ) 1
	BEST PUPPY BITCH Mitchell, Iain GRIFFONSBURG MISS VIRGINIA 1
	BEST BABY PUPPY BITCH JONES, CAITLYN CAMPIONECANI MAGNIFICA 1

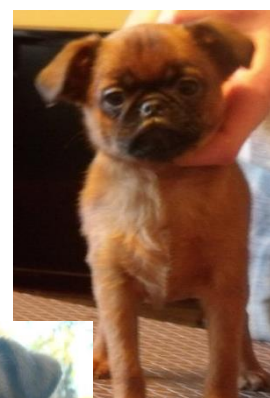
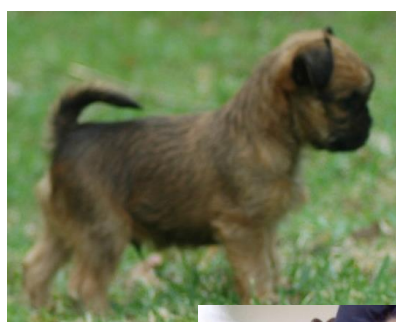
The second Royal, **Adelaide** had a small entry of 5 Griffons- 2 males and 3 bitches, shown by two exhibitors only. BOB and DCC was again Sup Ch Statuesque Pumper Nickel and Bitch Challenge and

Runner Up BOB was Troubadour Poison Ivy owned by S Stewart. Reserve Dog was Ch Troubadour Zurgs Heir and Reserve Bitch was Ch Tzani Briar Rose both owned by S. Stewart

Melbourne Royal at the **end** of September had an entry of 26 Griffons and saw some youngsters go through to the big awards. Best of Breed went to Mr I Mitchell's Griffonsburg Miss Virginia from the Puppy Class – she was also best Puppy and R/Up Best of Breed to Mr I & Mrs L Mitchell's Ch Tzani Neddie Seagoon. Best Baby Puppy of Breed was Diana K Norman & Tim Mills: Tzani Tigger Brat Bunny. Full results are below:

<p>Baby Puppy Dog</p> <p>1 Diana K Norman & Tim Mills: TZANI TIGGER BRAT BUNNY</p> <p>2 Ms C Jones: CAMPIONECANI ALFONZO</p> <p>3 Mr L & Mrs R Mitchell & Mrs D Norman: TZANI TOULOUSE BUNNY</p> <p>Minor Puppy Dog</p> <p>1 E.C. Canavan & J.M. Waghorn: AZANDE TIGGY TOUCHWOOD</p> <p>Intermediate Dog</p> <p>1 Mr I & Mrs L Mitchell: CH TZANI NEDDIE SEAGOON</p> <p>2 Miss K Grass: AZANDE LE BEAU</p> <p>3 Ms R Fraser: ONEWAY'S TRAZAN APANSON (Imp SWE)</p> <p>Australian Bred Dog</p> <p>1 Ms A Sharp: GR CH ALWOOD COUNTERFEIT</p> <p>2 Ms C Jones: CH WITCHGRIFF REDMOND</p> <p>3 Mrs S Stewart: CH TROUBADOUR ZURGS HEIR</p> <p>Open Dog</p> <p>1 Diana K Norman & Tim Mills: UK CH DONZEATA ROYAL TWEED (Imp UK)</p> <p>Challenge Dog Mr I & Mrs L Mitchell: CH TZANI NEDDIE SEAGOON</p> <p>Reserve Challenge Dog Ms A Sharp: GR CH ALWOOD COUNTERFEIT</p>	<p>Baby Puppy Bitch</p> <p>1 Ms C Jones: CAMPIONECANI MAGNIFICA</p> <p>2 Mrs J Gauci: KOBIRED BABY IMA STAR</p> <p>Puppy Bitch</p> <p>1- Mr I Mitchell: GRIFFONSBURG MISS VIRGINIA</p> <p>2 L & R Mitchell & E Mitchell: WILLRO GOTCHA SPELLBOUND</p> <p>Junior Bitch</p> <p>1 Ms A Sharp: ALWOOD MERCYS WAY</p> <p>2 Mrs V & Mr H Van Der Helm: RESAMELAD OLYMPIA</p> <p>3 Mr G Inifer: KANGO HELLO DOLLY</p> <p>Intermediate Bitch</p> <p>1 Mrs J Gauci: KOBIRED RUBI SLIPPAS</p> <p>2 Ms A Sharp: CH ALWOOD SUDUCTION</p> <p>3 Mr H & Mrs B Whiteford: CH ALWOOD ENCHANTED LAW</p> <p>Australian Bred Bitch</p> <p>1 Diana K Norman & Tim Mills: CH TZANI ISADORA DUNCAN</p> <p>2 Mr I Mitchell: CH TZANI JACKI WINTER</p> <p>3 Mrs V & Mr H Van Der Helm: CAMPIONECANI ISABELLA</p> <p>Open Bitch</p> <p>1 Diana K Norman & Tim Mills: CH TZANI HYACINTH BUCKET</p> <p>2 Mrs S Stewart: CH TZANI BRIER ROSE</p> <p>Challenge Bitch Mr I Mitchell: GRIFFONSBURG MISS VIRGINIA</p> <p>Reserve Challenge Bitch Mrs J Gauci: KOBIRED RUBI SLIPPAS</p>
---	---

More Baby Griffons



The Queensland Griffon Club Championship Show

The Queensland Griffon Club held their second Championship show on August with well UK Griffon breeder and Judge, Howard Ogden presiding. The entry I believe was 64. The Championship show was preceded by the Open show judged by Mr A Addicott.

I was unable to attend this year but everyone who attended reported a highly successful show. Exhibitors praised the friendly and relaxed atmosphere and the supportive behaviour and

sportsmanship of all the exhibitors.

The weather was perfect and the trophy table was impressive and the presentation by Howard Ogden after the show was of the high standard we would expect from a knowledgeable judge.

One of the interesting aspects of the presentation was when Howard Ogden lined all his



The Class in Show winners lined up for Howard Ogden's presentation (Thanks to Grant Odell for the photo)

Class in Show winners up and then discussed his reasons for his placings, referring to the breed standard as he did so.

This was a valuable opportunity for exhibitors to understand the workings of a judge's mind and it was also useful not only for the exhibitors but also for the large number of other non- Griffon guests, many of whom were judges who wanted to gain a better understanding of the breed

Although many of NSW the exhibitors were unable to attend due to the arrival of puppies, a number



of our club members were still successful at both shows including our Patron, Jocelyn Croad who won Best in Show at the Open show with Ch Nouveau Demonstrance and Diana Norman who won Runner up in Show with Ch Troubadour Pricklepants.

Other successful members were Terri Odell – Best Minor in show at the Open show, Liz Hollingshed Best Minor in Show at the Championship show, B Canavan Opposite Minor in both Shows

Liz Hollingshed with Miss Tessie Gilbert

My thanks to Sandie Feaver who supplied the show photographs. I do not

have a photo of either of the BIS winners)

Full results on the next page:

Queensland Griffon Club Open Show Judge -Allan Addicott

Best in Show Nouveau Demonstrance J Croad & AJ Cliquot - also Best Junior in Show

Runner Up In Show Ch Troubadour Pricklepants D Norman & T Mills – also Aust Bred in show

Runner Up In Open Show -Ch Troubadour Pricklepants

Best Baby Puppy Campionecani Quintillus CA Jones - **Opp** Campionecani Magnifica- C Jones)



Minor Puppy Nagpuni Midnight Mischief -T O Dell **Opp** Azande Tiggy Touchwood . B Canavan

Puppy Tzani Rhoda Dendron - D Norman & T Mills

Best Baby Puppy Campionecani Quintillus



Junior as for BIS **Opp** Tzani Mr Magoo D Norman & T Mills

Intermediate Witchgriff Red Puppy B Power & J McIntyre

Aust Bred as above R/Up In Show **Opp**- Ch Nagpuni Brooklyn Babe T Odell

Open Ch Nouveau Dominican S Thomas **Opp** Ch Tzani Hyacinth Bucket D Norman & T Mills

Griffon Club of Queensland Championship Show results: Judge Mr Howard Ogden

Best In Show - Sup. Ch. Statuesque Pumper Nickel. Gemcourt Kennels

Runner Up In Show - Ch. Statuesque Betsy Buttonhole. B. Power/J. McIntyre

Baby In Show - Campionecani Alfonzo. C.A. Jones. **Opposite** - Campionecani Magnifica. C.A. Jones

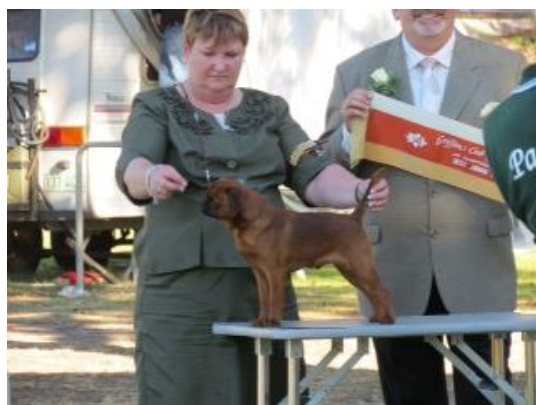
Minor In Show - GirriGirri Miss Tessie Gilbert. E. Hollingshead. **Opposite** - Azande Tiggy Touchwood. Canavan/Waghorn

Puppy In Show - Griffonsburg Miss Virginia. I.T. Mitchell

Griffonsburg Miss Virginia

Best Junior In Show - Ch. Tzani Mr Magoo. D.K. Norman/T. Mills. **Opposite** - Nouveau Demonstrance. A.J. Cliquot

Best Intermediate In Show - Witchgriff Red Poppy. B. Power/J. McIntyre. **Opposite** - Witchgriff Bear Grylls. B. Power/J. McIntyre



Australian Bred In Show - Ch. Troubadour Pricklepants. **Opposite** - Ch. Tzani Isadora Duncan. D.K. Norman/T.Mills

Junior at both shows – Tzani Mr Magoo

Best Open In Show – as for BIS **Opposite** – as for Runner Up

Best Coated Rough - Ch. Tzani Hyacinth Bucket. D.K. Norman/T. Mills

Best Coated Smooth - Ch. Amanecer Queen of Roses. H. Kubo/J. Maddock

Best Rough Head - Ch. Tzani Jacki Winter. I.T. Mitchell

Best Smooth Head - Ch. Tzani Brier Rose (AI). S. Stewart

Best Topline & Tail set - Troubadour Poison Ivy. S. Stewart

Best Gait - Ch. Tzani Mr Magoo. D.K. Norman/T. Mills

Best Veteran - NZ Ch./Ch. Nouveau Delinquent (imp. NZ). S.A. Thomas/J. Croad

Best Neuter - Ch. Campionecani Massimo

Best Owner/Bred/Handled - Ch. Amanecer Queen of Roses. H. Kubo/J. Maddock

Golden Oldies

Our Golden Oldie this edition is one of my favourite boys, **NZ Ch and Aust Ch Paris Night Fever**, owned and bred by Sandie Feaver in New Zealand.

Hunter is now 12 years old and is still the dignified and handsome boy he always was.

He has his own little quirks, he likes to sit in corners and watch the world go by and he is always laid back and unruffled by events.

He still comes out to strut his stuff in the veterans class at some special shows – just to show the youngsters how it is done but most of the time he is the number one dog at home and presides over the rest of the Paris gang. And every now and then he still sires some very lovely children– no wonder he is smiling.



Sydney Royal Draft schedule for next Easter.

Griffons will be judged by Frank Kane (UK) on Thursday 10th April - 3 days before the Country Griffon Club of NSW Championship show which will be on Sunday 13th April.

Mr Kane is a very well respected and experienced UK judge who has judged at major shows all around the world. He has also judged Best in Show at Crufts. The draft timetable is now posted on the Sydney Royal website. Please note that there could still be some minor changes over the next few weeks. This will hopefully only be with the allocation of judges rather than switching a day for a breed. The link is http://www.sydneyroyal.com.au/breed_judging_schedule_2014_draft.pdf

Baby Griffon Photos

Fat full and happy



Proud Mum and son



2012 – 2013 Point Score Competition

The last Point score competition saw a total of 22 dogs owned by club members compete. At a number of shows there were also dogs competing owned by non- club members but these dogs have not been counted in the point score results as it is only open to members.

The point score was very well supported by members with between 17 and 25 dogs entered in the designated point score shows. These entries are in contrast to the non- point score shows which usually only drew an entry of between 0 – 5 Griffons. The judges who received these large entries often commented on how nice it was to see so many Griffons.

The top ten dogs are detailed below, followed by a complete printout of the Point score placings.

The winner of the point score by a very clear margin with 101 points, was **Ch Balliol Gellert Grindalwald**, owned by Jannelle Tremeneere and Michelle Parker Brien and expertly prepared and handled by Jannelle. This was a repeat of Dumbledore's win of the previous year. On his way to his point score win Dumbledore also won one Runner Up In Group and three Intermediate in Group awards.

Dumbledore relaxing in the ring



In second place was Dumbledore's sister **Ch Balliol Gertie Giggles**, owned by Michelle Parker Brien with 54 points which also included two Intermediate in Group wins.

Ch Balliol Gertie Giggles



Third place went to **Ch Cricklewood Night of Magic in Paris (imp NZ)** bred by Sandie Feaver and

David Fifield and owned by Ashleigh Barber and Michelle Parker Brien. Neville is expertly handled by Ashleigh. He has 47 points and won two Class in group awards. Neville was also the winner of the Puppy Point score competition with 44 points.

Ch Cricklewood Night of Magic in Paris (imp NZ)



Fourth place was

Ch Rosndae Ginger Snap, competing in the Neuter class. Bred by Ros and Dave Finch, he is owned and shown by Kerrie Taylor. Due to ill health, Kerrie has not been able to show as often as she would like but Bosley still managed to collect 38 points including two Neuter in Group awards.

Ch Rosndae Ginger Snap





The next few placings were very close with only one point separating each dog, making for a very close competition

Fifth place went to **Ch Raweke Patti Mae CCD**, also competing in the Neuter class with 33 points. Patti was bred by Jocelyn and Eddie Croad and owned by Michelle Parker Brien. At almost 7 years of age she still loves showing and trots around the ring like a little clockwork toy. She won two Neuter in Group awards.

Ch Raweke Patti Mae CCD

Sixth Place was **Ch Balliol Dolly Dimple**, just one point behind Patti with 32 points

Ch Balliol Dolly Dimple



Seventh place, again only one point behind on 31 points was **Ch Raweke Apple Cider** owned by Jane Wistuba and

Michelle Parker Brien

Ch Raweke Apple Cider



Eighth place, just 2 points behind

on 29 points was **Ch Paris Starry Starry Night**, bred by Sandie Feaver and owned and handled by Jane Wistuba.



Ch Paris Starry Starry Night



Equal eighth place, also on 29 points, went to **Ch Balliol Fezzwig Fever**, owned and bred by Michelle Parker Brien

Ch Balliol Fezzwig Fever

Tenth place was **Ch Balliol Esmerelda Easteregg**, owned and shown by Jannelle Tremeneheere, 20 points

Ch Balliol Esmerelda Easteregg



11th - **Rosndae Naughty but Nice**

12th **Ch Rosndae Charlies Angel**





Full Point score results

No	Name of Dog	North of the Harbour Saturday 21.7.12	Spring Fair 2.9.12 Sunday	Lake Macquarie All Breeds Kennel Club Saturday 29.9.12	Southern Highlands Kennel & Obedience Club Sunday 21.10.12	St George & District KC Saturday 8.12.12	CNCC ABKC Saturday 19.1.13 (AM show)	Wollongong & DKC 2.3.13 (Sat AM Show)	Albion Park Kennel Club Sunday 5.5.13	Nor West KC 22.6.13	Total Score
1.	Ch Balliol Gellert Grindalwald	5	8	10	20 (R up in Group)	10	15 (Int in Group)	3	15 Int in Group	15 (Int in Group)	101
2.	Ch Balliol Gertie Giggles	a	15 (BOB & class In group)	5	8	8	8	15 (Intermediate in Group)	8	2	54
3.	Cricklewood Night of Magic in Paris	15(BOB & Class in Group) 15(PPPS W)	5 5	15 (R Up BOB & class in group) 15(PPPSW)	3 3	3 3(PPSW Tie)	3 3	a	3 3	a	47 44
4.	Ch Rosndae Ginger Snap	a	15 (Neut in group)	a	8	a	a	a	15 Neut in Group	a	38
5.	Ch Raweke Patti Mae CCD	a	3	a	15(Neut in group)	15 (Neut in Group)	a	a	a	a	33
6.	Ch Balliol Dolly Dimple	a	3	6	3	5	5	5	5	a	32
7.	Ch Raweke Apple Cider	2	3	1	5	5	2	8	3	3	31
8.	Ch Paris Starry Starry Night	8 8	5 5(PPPS W)	3 3	3 3(PPSW)	3 3(PPSW Tie)	3 3	2	-	3	29 24
9.	Ch Balliol Fezzywig Fever	a	2	3	3	3	3	5	5	5	29
10.	Balliol Esmerelda Easteregg	a	2	3	5	3	1	3	1	2	20
11.	Rosndae Naughty But Nice	5 5	a	a	2 2	a	2 2	a	1	10	20 9
12.	Ch Rosndae Charlies Angel	3	a	a	a	a	3	a	3	5	14
13.	Keheal Luna Lovegood							3 3 (PPSW)	3 3	3 3	12 12
14.	Ch Raweke Buntly Bear	a	2	2	2	2	2	a	-	a	10
15.	Tiroroa Get Smart (imp NZ)	a	3	2	a	a	5	a	a	a	10
16.	Ch Balliol Barnacle Bill	a	a	3	3	2	a	2	a	a	10
17.	Kehael Black Pearl	2 2	2 2	a	1 1	a	1	a	2	a	8 6
18.	Rosndae Sugar Plum Princess	2 2	a	a	2 2	a	2 2	a	2	a	6 6
19.	Kehael Black Myrtle	1 1	1 1	a	2 2	a	2	a	a	a	6 6
20.	Ch Kehael Million Dollar Man	3	a	a	2	a	a	a	a	a	5
21.	Ch Nagpuni	a	a	a	2	a	a	a	a	2	4



	Brooklyn Babe RN										
22	Nagpuni Midnight Mischief									3 3	3 3

Point Score Competition -Rules and Scoring System

Open Competition

Points will be awarded to exhibits at designated point score shows of the Country Griffon Bruxellois Club of NSW

Points will be awarded in the following manner:

Best in Show	50 points
Runner Up in Show	40 points
Class in Show	30 points
Best in Group	25 points
Runner Up in Group	20 points
Class in Group	15 points
Best of Breed	10 points
Runner up in Breed	8 points
Challenge (without BOB or Runner up)	6 points
Reserve Challenge (without BOB or Runner up)	5 points
First in Class	3 points
Second in Class	2 points
Third in class	1 point

1. Points will be awarded to the exhibit will be highest result gained by an exhibit. They will not be accumulative at a single show.
2. The total points gained by each exhibit will be added together and published in The Phoenix
3. . The competition will be open to all exhibits including those in Baby Puppy
4. Recognition will be given to the Winner of the Point Score and the Runner Up in the Point Score.
5. Only club members are eligible. Should a non-member win the points won by the member will be awarded only. Eg if a non-member wins BOB and a member wins Runner Up BOB then no BOB points will be awarded and the member will be awarded the points for Runner Up BOB

Puppy Point Score Competition

This competition is open to Puppies from 3 months of age up to the age of 18 months.

Points will be awarded in the same way as the Open Point score competition.

Puppies may compete in the Open Point score competition and the Puppy Competition simultaneously

1. Points will be awarded in the following manner:
2. Points will be awarded to the exhibit will be highest result gained by an exhibit. They will not be accumulative at a Points will be awarded to exhibits at designated point score shows of a designated show.
3. The total points gained by each exhibit will be added together and published in The Phoenix
4. Puppies will compete in this until they reach the age of 18 months. All points accumulated up to the age of 18 months will be counted towards the point score. All points gained after the age of 18 months will not be counted in the Puppy Point Score but will go towards the Open Point Score
5. A separate recognition will be given for the best Puppy in the Point score and the Runner up.
6. If 2 puppies achieve equal results at a show the award will go to the Griffon that defeats the most dogs in its class. Eg- if there are 2 baby puppies and 3 Junior then the award will go to the Junior winner as it defeated more dogs. If the results are still equal then both will be acknowledged.



Point Score Shows for 2013/2014

The following shows are the designated shows in the current competition

1. North of the Harbour Saturday 20.7.13 - **concluded**
2. Spring Fair Saturday 31.8.13 - **concluded**
3. Lake Macquarie All Breeds Kennel Club Saturday 28.9.13 - **concluded**
4. Southern Highlands Kennel & Obedience Club Saturday 19.10.13
5. 4P's All Toy Dog Club of NSW Sunday 10.11.13
6. Wollongong & DKC Saturday 3.3.14(AM Show) Date to be confirmed
7. Bulli Dist KC Sunday 28.4.14 Date to be confirmed
8. Newcastle & Nthn District KC Saturday 11.5.14 Date to be confirmed
9. Brisbane Water Legacy KC Sunday 16.6.14 Date to be confirmed

2013 – 2014 Point Score Competition

The new Point Score is underway and there have been 3 point score shows so far. Entries have been down due to a number of people who have been whelping litters and staying home to care for Mum and the babies, however we have still managed to draw between 10 and 16 dogs at each show. The shows that do not offer Neuter as a class also miss out on a number of entries as a number of exhibitors regularly show their Neuter Griffons.

In 2014 we will hopefully see some of these promising puppies in the ring and the numbers exhibited will increase to our usual size.

The first point score show was **The North of the Harbour Show** at the end of July. Best of Breed and Dog Challenge winner was **Ch Raweke Apple Cider** (Jane Wistuba).



Runner Up BOB and Res DCC was **Ch Balliol Gellert Grindalwald** (Jannelle Tremeneheere).

Bitch Challenge was the young Black and tan rough girl **Keheal Luna Lovegood** (J Tremeneheere)



Res BCC went to **Ch Paris Starry Starry Night** (J Wistuba)

The second Point Score show was **The Spring Fair** Saturday 31st August.

The Judge was Mr F Ruiz Rodrigues (Spain) who had his own method of judging. BOB and DCC was **Ch Troubadour Pricklepants** owned by S Stewart & D Norman. He was also





The Country Griffon Bruxellois Club of NSW Inc.

shortlisted for Best In Group and went on to win Intermediate in Group under Mrs E Wogan (Ireland).

Runner up BOB & Res DCC was **Ch Raweke Apple Cider** owned by J Wistuba & M Parker Brien.



BCC was **Ch Balliol Gertie Giggles** (M Parker Brien).

The judge did not allow the 2nd place getter in Intermediate (Ch Paris Starry Starry Night) to re-enter the ring for the Res BCC and it was awarded to **Tzani Rhoda Dendron** (E & K Bell).



The third point score show was held on the 28th September at **The Lake Macquarie ABKC**, part of the International Spring Spectacular. The Judge was Mrs J Hodgkinson (Canada)



Best of Breed & Dog CC was **Ch Cricklewood Night of Magic in Paris** (A Barber), handled here by C Parker

Runner Up BOB & res Dog CC was **Ch Raweke Apple Cider** (J Wistuba) who has been very consistent in this competition.

Bitch CC was **Nagpuni Midnight Mischief** (T Odell) from the Minor class and she



also went Minor in Group

Res Bitch CC was **Keheal Luna Lovegood** (J Tremenheere).

After 3 point score shows the results are mixed and it is good to see a number of new dogs emerging from the ranks to add spice to the competition.

As at 1st October-the results are as follows -

- 1st Ch Raweke Apple Cider 26 points,
- 2nd Nagpuni Midnight Mischief -21 points,
- 3rd Ch Troubadour Pricklepants- 15 points,
- 4th Ch Cricklewood Night of Magic in Paris 13 points
- 5th Keheal Luna Lovegood - 11pts
- 6th place - a 3 way tie - all on 10 points. They are:

- Ch Balliol Gellert Grindalwald
- Ch Paris Starry Starry Night
- Ch Raweke Patti Mae CCD

Just let me get that shoelace!!





Easter Griffon Spectacular 2014

Easter 2014 promises to be an exciting time for Griffon exhibitors. Put the following dates in your diary and more details will be following in later newsletters

- ❖ **Thursday 10th April - Sydney Royal** Griffons will be judged by Frank Kane (UK)
- ❖ **Sunday 13th April. - Country Griffon Club of NSW Championship show-** Hillsborough. The Judge will be Ms. Josie Zijlmans from The Netherlands.
- ❖ **Easter Saturday 19th April – Flat Face Toy Dog Club –Sydney}** *These dates to be confirmed &*
- ❖ **Easter Monday 21st April - 4 P's Toy Dog Club Show – Sydney}** *Judges to be advised*

At the present time these are the only details we have but more will be provided as they come to our notice.

We look forward to welcoming Griffon exhibitors to these shows

We are excited to have contracted Josie Zijlmans as the judge for our show. She is an experienced and respected judge in Europe and has judged Griffons on a number of occasions. She has only a limited number of appointments during her trip to Australia and we look forward to her opinions on our dogs. A full biography will be provided in later editions of the Phoenix.

More Baby Griffons



Sleepy babies



Come on Mum – play with me!!





 <p>Rosndae Griffons (NSW) <i>Quality Red Rough and Smooth</i> Roslyn & David Finch Ph: 02 88502537 E: rosndae@bigpond.com <i>Accredited Breeder The CGBC of NSW</i></p>	 <p>Kehael Griffons (NSW) <i>Red & Black & Tan</i> Kerri & Michael Taylor Ph: 02 42961586 E: kehael@optusnet.com <i>Accredited Breeder The CGBC of NSW</i></p>	 <p>Raweke Griffons (QLD) <i>Red rough & smooth for 45 year</i> Jocelyn & Eddie Croad Ph: 07 54656118 E: raweke@bigpond.com <i>Accredited Breeder The CGBC of NSW</i></p>
 <p>Griffons of Tzani (QLD) Diana Norman & Tim Mills Ph: 07 34253442 E: diana@tzani.com.au</p>	<p>Dilkare Griffons (NSW) Donna & Jason Murphy Ph: 02 96234465 E: jdmurphy73@optusnet.com.au <i>Accredited Breeder The CGBC of NSW</i></p>	 <p>Balliol Griffons (NSW) Michelle Parker Brien Ph: 02 9436275 mbrienparker@yahoo.com <i>Accredited Breeder The CGBC of NSW</i></p>
<p>Sibermoon Griffons (QLD) Shane Thomas 0438861189</p>	<p>Brewington Griffons (NSW) Susan Brewin Ph: 02 66518497</p>	 <p>Shigriff Griffons (SA) Michele Gurney Mob: 0410488236 E: mich-jules@live.com.au</p>
 <p>Nagpuni Griffons (NSW) Terri O'Dell Ph: 02 98941440 E: terri@petsonthepark.com.au <i>Accredited Breeder The CGBC of NSW</i></p>	<p>Azande Griffons (Vic) Beth Canavan Ph: 03 56641275 E: azande@iprimus.com.au</p>	 <p>Shigriff Griffons (NSW) Caroline Elder Mob: 0438898597 E: celder@une.edu.au</p>
 <p>Paris Griffons (NZ) Sandie & Fern Feaver Ph: 006478246674 E: sandfeaver@hotmail.com</p>	<p>Tiroroa Griffons (NZ) Jocelyn Walker E: jossw@xtra.co.nz</p>	<p>Woodover Griffons (Vic) Robin Simpson Ph: 03 56625850 E: woodovergriffons@gmail.com</p>
<p>Millbank Griffons (VIC) Heather & Shelley Delaland Ph : (03) 54289306 Email : delaland@netcon.net.au</p>	<p>Harvickgold Griffons (NSW) Vicki Harris & Caroline Woods Email: v.m.harris@optusnet.com</p>	<p>Briary Griffons (WA) Hilary Swain Ph: 0893984476 Email: briary@tpg.com.au</p>
 <p>LaFolie Griffons (NSW) Claire Parker Ph: 02 49436275 E: lafoliepbgv@yahoo.com <i>Accredited Breeder The CGBC of NSW</i></p>	<p>Griftoi Griffons (Tas) Heather Becket Ph: 0362931490 or 0429931490</p>	<p>Sargycul Griffons (Vic) Kathy Grass Ph: 0419312469 Email: kathydog@dcsi.net.au</p>
<p>Angelini (NSW) Marcia Mulhearn Ph: 0437913523 E: angelini.ig@telstra.com</p>	<p>Beaufox Griffons (NSW) Jane Wistuba Ph: 2000758080 E: beaufox@bigpond.com</p>	<p>Nevaending Griffons (NSW) J Tremenheere tremenbear@yahoo.com.au</p>



Club Directory

The Griffon Club of Queensland

President: Ted Ellis

Secretary: Janet Schluter E:

Ph: 0734253442

Treasurer: Jason Maddock

The Griffon Bruxellois Club of Victoria

President: Ian Mitchell

Secretary: Kathy Grass

Treasurer: Robyn Simpson

Stud Directory

A stud directory is available to members.

The cost is \$10 per 2 dogs.

Please send the money and the details regarding the dog to The Treasurer 10 Allendale St Pelaw Main



More Griffon Babies

Bath time with Mum



It's my bone!



Play time

Who you looking at?





The Country Griffon Bruxellois Club of NSW Inc.



Membership Application/ Renewal Form

(Please send this membership application to The Secretary J Tremenheere 10 Allendale St
Pelaw Main

I wish to join / renew membership of The Country Griffon Bruxellois Club of NSW Inc

DATE of APPLICATION _____

Name/s:

Address:

Phone

Mobile:

Email Address:

I am a member of Dogs NSW -

Yes / No (circle one)

Dogs NSW Number

(if applicable):

I am a - Breeder / Exhibitor / Obedience, Rally, DWD or Agility Competitor / Pet Owner of a
Griffon Bruxellois .

(Circle the one/s which apply to you)

Name of breeder who bred your Griffons:

Breeder Prefix:

Number of Griffons Owned

Names of Griffons:

I wish to join this association because:

Membership Fee: \$5.00 per person. I enclose my / our fee offor annual
membership

.I agree to abide by the Rules, Regulations Codes of Ethics and Conduct of this club

Signed: