

The Bull Terrier Club of Victoria Inc.

(Incorporated A0026517R)



October 2015
Bully News



The Bull Terrier Club of Victoria Inc.

Committee

President:	Alison Sutcliffe
Vice President:	Sherri Wakefield (Fundraising/Social Media/Website)
Vice President:	Les Greenall
Treasurer:	Jenny Woodsell
Secretary:	Deborah Patterson
Show Secretary:	David Hirst (Trophy Officer)

ALL CORRESPONDENCE AND ENQUIRY'S TO

Bull Terrier Club of Victoria Inc.
Att: Secretary
PO Box 1635
Melton West VIC 3337
www.bullterrierclubvic.com
bullterrierclubvictoria@gmail.com

Committee:

Ginna Frith (Catering Officer)
Jacqui Smith (Promo Trailer)
Bernadette Marshall
Committee (Vacant)
Committee (Vacant)

LIFE MEMBERS:

VIN AND SHIRLEY HEALAND, ALISON SUTCLIFFE, LES GREENALL, CATHY SLUGA, WILMA RAWLINGS, DARYL MUNN, ROSS AND EVE BRENNAN, NORM JESSUP.

Every care has been taken in the compilation of this magazine, but the Editor and the club assumes no responsibility for errors or omissions or any effects arising there from. Opinions expressed in these pages, whether in articles or advertisements are not necessarily the opinions held by The Bull Terrier Club of Victoria Inc.

President's Report

Hi Members,

With the hotter months coming on with not much warning, please think of you four legged friends and make sure they have plenty of water and shade if they are outside as it doesn't take long to heat up if they are in the sun or without a plentiful supply of water.

The committee and I would like to know if there is anything we can do to make it more interesting for the members to attend the club fun days or members comps as the attendance has dwindled and we are seriously considering it if is still worth putting on these events with little interest from the members. Please let us know if there is anything you think we could do to make you want to attend before we consider whether we continue to hold any in the new year.

We are holding our two shows in November at KCC Park with local judges Les Greenall and Gail Buckley and we hope to see you there.

And lastly the club can always use new members with fresh ideas and if you are a breeder we still have the \$15.00 membership for your puppy buyers so please consider joining them up so they can be part of either showing or just socialising their pups and having a day out with like-minded people.

Cheers

Alison Sutcliffe

Secretary's Report

My wishes go out to Sherri this issue who's pet bully Raymond is battling cancer of the nose. You may have seen Raymond at our many public events Pet Expos, bully walks and recently The Royal Melbourne Show. He is often subjected to all manner of costumes but he is always smiling about it and is a great hit with the public. I wish Ray and Sherri all the best and I'm sure it will be a difficult time for Sherri as Ray has to be flown to Brisbane for specialist treatment and will need to stay there for a month, not to mention that vet bill. There is a link to Raymond's story on our Facebook page.

The lengths we will go to for our furry friends are often extreme and I myself have spent in excess of fifteen thousand dollars to save one of my bitches from nasal fungus. Fortunately she was insured and so I got much of it back, but it is still not easy to come up with the funds in advance and often it is a very emotional decision when your dog is on death's doorstep. That said, it is definitely worth looking at a second opinion if there is a bit of time up your sleeve. Many procedures can range greatly in price. As an example, I recently priced a scheduled caesarean at a number of vet clinics around Melbourne. I got quoted a range of prices varying from \$800 to \$2500!! Thank goodness the cheapest one was my local vet!

And lastly, watch out for snakes, they are out and about early this year! My local vet has had quite a few already! Having a vial of injectable Vitamin C in your fridge is a good first aid tool!

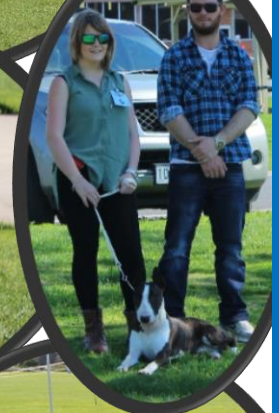
Cheers Deb

Members Comp Results & Pics

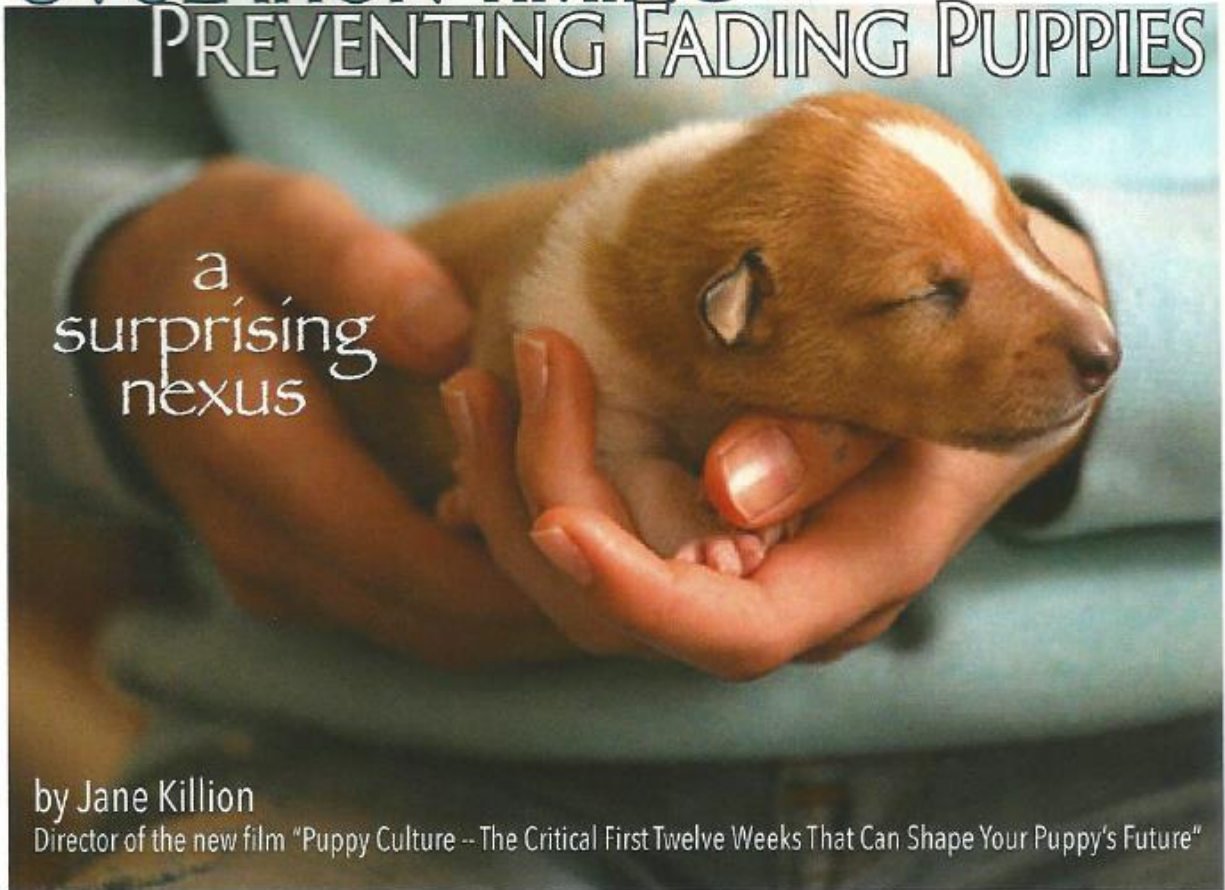
13th September 2015

Judge: Robynne Spencer

DOGS	BITCHES
Baby Puppy Dog 1 st Sarajeni Impee Cosmic Knight	Baby Puppy Bitch 1 st Sarajeni Impee Regal Angel 2 nd Sarajeni Impee Red Empress
Minor Puppy 1 st Hulia Jack Fruit R/U Best Dog & RUIS	
Puppy 1 st Jotif Hear Me Roar	
Junior 1 st Potens Iron Born BEST DOG & BIS 2 nd Potens The Nights Watch 3 rd Datoneis Astro Boy	
Intermediate	
Open	
Champion 1 st Wakatang River Boy 2 nd Satori Magic Mike 3 rd Wakatang Mr Myiagi	
BEST DOG - POTENS IRON BORN RUNNER UP BEST DOG - HULIA JACK FRUIT	
Neutered Dog 1 st Bulroarus Jack Douglas	



OVULATION TIMING & PREVENTING FADING PUPPIES



a
surprising
nexus

by Jane Killion

Director of the new film "Puppy Culture -- The Critical First Twelve Weeks That Can Shape Your Puppy's Future"

© Cordula Weiss

The causes of "Fading Puppy Syndrome," where puppies inexplicably begin to fail and die within a few days of birth, is still poorly understood. Breeders valiantly try heroic measures to save the puppies - a few puppies might make it, but many, if not most, still slip through a breeder's fingers like so many grains of sand.

But new research about dogs, combined with established knowledge about farm animal breeding, has led to some new ideas that could stop some cases of fading puppy syndrome before they start.

"Passive" Is Aggressive Protection

Most mammals (animals that drink their mother's milk as babies) are born with incomplete immune systems. They are not capable of developing their own immunity and they would almost certainly die unless they got immunity from an external source. So they rely on "passive immunity" to survive. Passive immunity simply means immunity derived from another individual.

Human babies acquire passive immunity while still in the womb. The maternal antibodies cross

the placenta to the infant, and the baby is born with some protection from disease.

Dogs have a different method of granting passive immunity to their offspring. Puppies (like calves, piglets, foals, and kittens) receive little or no maternal antibodies while in the womb - little or no maternal antibodies cross the placenta to the puppies, and the puppies are born with very little or no immunity to disease. They rely on drinking their mother's colostrum after they are born to gain the antibodies they need to survive.

Colostrum - It's A Two Part Story

Just to review, colostrum is the first milk the bitch produces in the first few hours after whelping. One of colostrum's principal functions is to pass on maternal antibodies to the puppies. Whatever the bitch has immunity to, her puppies will also have immunity to, if they drink her colostrum in a timely fashion. There's a big catch, however. The reason puppies can absorb the maternal antibodies from colostrum is that they are born with "open" guts which allow the colostrum molecules to pass through without being digested. Within a few hours of birth, however, the puppies' intestinal walls begin to close. Once gut closure is complete, the maternal antibodies are broken down, digested, and rendered useless. Even if the bitch produced colostrum for days or weeks, the puppies can't benefit from them after the first few hours of life.

A Race Against Time

The reality is that "gut closure" (the time when the puppies' intestinal walls close and are no longer able to absorb colostrum) begins within just a couple of hours of birth. In a recent study, 22 Beagle puppies were given colostrum at 0, 4, 8, 12, or 24 hours after birth. The puppies' immunoglobulins were measured, and the results are startling:

- There was a significant fall off of absorption of immunoglobulins after only four hours after birth.
- Immunoglobulin absorption fell steadily with each hour.
- By the time the puppies were 12 hours old, there was very little, if any, absorption of immunoglobulin.

The Takeaway:

Your **goal** is to get every puppy nursing on colostrum within the first four hours of his life.

But it's **crucial** each puppy ingests colostrum in the first 12 hours of life.

How Crucial Is It?

A 2014 study by Royal Canin looked at the correlation between how many antibodies a puppy had at two days old (serum immunoglobulin concentration) and neonatal death rate. The results are dramatic and quite

clear - low antibody levels at two days old have a very strong correlation with neonatal death rate.

Life and Death Numbers

195 puppies from 34 litters of 12 different breeds in a French breeding facility were included in the study. Blood was drawn from the puppies at two days old and antibodies measured. The correlation between neonatal survival and antibody levels at two days old is striking:

- 95% of the puppies with antibody levels **above** 230 mg/dl at two days old survived to three weeks old.

- Only 56% of puppies with antibody levels **below** 230 mg/dl at two days old survived to three weeks old.



Why Should This Matter So Much?

"Fading Puppy Syndrome" is a catch-all phrase applied to any neonatal puppy that dies from unknown and uncontrollable causes. There are lots of reasons a puppy might "fade" including congenital abnormalities, constipation, chilling, hypoglycemia, inadequate maternal care and/or lack of competent breeder or veterinary intervention.

But the Royal Canin study seems to indicate that the lion's share of fading puppies are fading because their low antibody levels made them unable to fight off routine viruses and bacteria to which all puppies are exposed at birth.

The Big Four

In the Royal Canin study, 91% of neonatal deaths occurred in the first week of life, which is a typical pattern for "fading puppies."

The most common culprits in early neonatal deaths in the study were the "Big Four":

- E Coli,
- Streptococcus sp,
- Staphylococcus sp, and
- Herpesvirus

The truth is that most all puppies are exposed to the "Big Four", either in the birth canal or shortly thereafter in the environment. Things like E coli, staph and strep naturally occur in the birth canal of a normal and healthy bitch. Puppies get banged up coming down the birth canal and their umbilical cords are lovely hosts for bacteria. There's all kinds of exposure and perfect conditions for opportunistic infection in the birth process.

While it's certainly good practice to provide a clean whelping environment, it's laughable to think that you can provide a truly sterile environment for your puppies. The only real defense

against these pathogens is the passive immunity the puppies derive from their mother. So it would appear that getting passive immunity into our puppies via colostrum is the single greatest factor within our control in reducing neonatal deaths.

Well, That's Useful Information...Not.

OK, for the one or two of you out there who are not hip to the idea of taking blood from the jugular vein of a two day old puppy, this is not particularly helpful information. How do you know if your puppies have sufficient antibody levels, and what can you do about it if they don't?

Interestingly (and unfortunately for us), the Royal Canin study found that you can't predict a puppy's antibody level by testing his mother's antibody level. There was no correlation found between the 34 dams' antibody concentration levels and those of their offspring. So that method of "backing into" puppies' antibody concentrations is out.

But there was another, more helpful finding for breeders trying to determine antibody concentrations in their puppies.

Weighing In On The Subject of Antibody Concentration

The Royal Canin study found that simply weighing puppies in the first two days of life is a reliable predictor of antibody concentrations. Puppies who did not gain weight in the first two

days of life also had low antibody levels. This is consistent with well-established research in the cattle and swine industries. However, unlike the cattle and swine industries, we still don't have data on exactly how much weight gain is necessary to cross the "magic" 230 mg/dl threshold. The Royal Canin study did demonstrate that weight gain in the first 2 days has a direct correlation with a puppy's antibody concentration, but they did not draw a specific conclusion about what a safe weight gain would be.

The practical takeaway for breeders is, while it's normal for a puppy to lose some weight in the first day after birth, we would be well advised to consider that a puppy that does not gain weight by the end of 48 hours may have dangerously low serum immunoglobulin concentration.

OK, So What Do I Do With This Information?

At the time of this writing, we are unaware of any commercially available alternative sources of antibodies for puppies. There are, however, a few different protocols to boost immunity in puppies:

- In the first few hours of life, you can feed your puppies a few drops of plasma from a healthy adult dog.
- After gut closure has begun (approximately 4-12 hours) the plasma should be injected into the puppies abdominal cavity. (YIKES! Probably not DIY so this is another reason to align with an experienced repro vet before having a litter.)
- You can buy frozen plasma for this purpose or you might consider having blood drawn on your bitch so you can have your own frozen plasma.
- Please note this information on plasma is not meant as veterinary advice. For further study, please visit www.hemopet.com where Dr. Jean Dodds outlines her protocol for frozen plasma supplementation together with references for her recommendations.
- If the bitch has colostrum, but for some reason the puppy is not nursing in the first 4 hours, you can express colostrum and feed it to the puppy. This method

will quickly convince you of the need for someone to invent a dog-milking machine.

- You can give your puppies frozen dog colostrum (either by collecting and freezing it yourself or acquiring it elsewhere) - of course warmed to dog-body temperature. There's very little data on this kind of supplementation in dogs, but in other animals it has been shown that colostrum does degrade somewhat with freezing.

Wait, Back Up, Where Does Ovulation Timing Come In?

If there's one thing you might have noticed, once a puppy "misses" his golden window to take in colostrum naturally, you're playing catch up with some labor intensive, scary, and not 100% proven tools. So your first concern as a breeder should be to try to get the puppies on the ground and nursing in a timely fashion.

As it turns out, when an animal struggles for a long time in labor, or never goes into real labor, her offspring may be unable to benefit from colostrum after birth. It's thought that the stress and lack of oxygen (hypoxia) from prolonged labor may trigger premature gut closure, although the mechanisms for this are still not well known. However, it is a very well known fact in livestock industries that dystocia (prolonged or difficult labor) is likely to reduce passive immunity transfer, and the Royal Canin study cited dystocia as one of the common causes of decreased passive immunity transfer in dogs.

Timely veterinary intervention and/or breeder assistance has been shown to improve outcomes in livestock industries, and dog breeders would be well advised to adopt the same "best practices." However, before you can know when to intervene, you have to know when your bitch is due. And that, my friends, is where ovulation timing comes in.

Still Counting From Breeding Dates? Don't Make Me Come Over There...

It's vitally important for breeders to understand that breeding dates do not control due dates. Bitches have a gestation of 63 days from ovulation (or 65 days from LH surge). 90% of bitches will whelp in this time frame +/- two days. Breeding dates are irrelevant. It's very well accepted science that it is ovulation, not breeding

detect when a litter or puppy is stressed or needs help getting out. But at the very minimum, being prepared with the above three things forms a basic level of preparedness that every breeder should have.

The Bottom Line

I want breeders to re-evaluate ovulation timing and part of a compassionate pregnancy wellness protocol for the bitches that they care about, and the puppies of those bitches.

Again, there are a lot of reasons for “fading puppies” and ovulation timing is not a cure-all preventative. But in the midst of a lot of things we can’t control, ovulation timing and a forming relationship with a good repro vet/surgeon are things we CAN control.

We all have so much emotionally and financially invested in our litters, and our bitches are counting on us to look after their interests - why not take every measure possible to improve outcomes for our girls and their puppies?



For references and further reading, visit the Learning Center at www.puppyculture.com

BTCV 2015 EVENTS

BTCV Championship & Specialty Shows

Sunday 29th November 2015

Judges: Les Greenall & Gail Buckley

Location: KCC Park, 655 Westernport Hwy, Skye

BTCV Open Show/Fun Day & Big Dogs Day Out

Sunday 13th December 2015



Open Show

Sunday 13th December 2015

K.C.C. Park
655 Westernport Hwy, Skye
Entries close 26th November 2015.

Judge: Mr. Keith Spicer
Judging commences 11-00am.

Entries to: Mr David Hirst, 60 Rutherford Parade, Warneet 3980

"Direct Deposit payments of entries accepted with emailed receipt as proof of payment"

BSB 633 108 Account number: 125398453 email address bullterrierclubvictoria@gmail.com

All enquiries to the Show Secretary on 03 5998 7493 please no calls after 8pm.

Please make all cheques payable to: **Bull Terrier Club of Victoria Inc.**

(Please note that entries will not be accepted without fees paid in full).

Members Entry for each show:	Non-Members entry for each show:
Entry = \$10.00	Entries = \$12.00
Baby Puppy = \$5.00	Baby Puppy = \$5.00

Catalogue: \$5.00

* Catering will be available.

Classes to be judged in order: Dogs 1, 2, 3, 4, 5, 10, 11, 18 *, 21.

Bitches 1A, 2A, 3A, 4A, 5A, 10A, 11A, 18A *, 21A.

Prizes and Sashes for all "In Show" awards.

This Event will be held in accordance with VCA Regulations, Codes, Policies & Procedures (Effective 14 February 2013) Please note Rule - 7.5.25 No handler or exhibit shall enter the judging ring wearing or bearing any item which identifies by name, prefix, position or distinctive style an exhibit, exhibitor, breeder, sponsor or award; exhibit numbers excepted.

**18 & 18A – As per ANKC clause 3.2 "Class 18/18a is ineligible to compete against entire exhibits for challenge or best of breed awards. To compete in neuter classes, a dog must be registered as a neuter on the main register.*

Class 21 & 21A are for animals who have obtained their Champions title

The Bull Terrier Club of Victoria Inc. Reserves the right to refuse any entry.

This show is part of VCA's Big Day Out for Dogs come along and join in all the fun and activities happening on the day. Gates Open 10-30am

From the Bull Terrier Club of America...

Good SportAward:

1. **Dog shows are a sport.** When you “play”, the end result should be joy and delight. When you “compete”, the end result is all too often an unattractive level of intensity. We have all witnessed individuals whose desire to win more than play in equity and fairness caused clashes within our group. This definitely does not benefit our dogs. Some say that the root of the problem is today’s culture, which places too much emphasis upon the ideas of competition and victory; as a consequence, how one played the game, or “good” sportsmanship have been relegated to the back seat. **It is our goal to remind our club members, that we all were drawn to the sport because we wanted to immerse ourselves in things Bull Terrier, spend quality time with our dogs, and with our dog friends.** To experience joy and delight in each, and NOT experience the extreme intensity and disenfranchisement found in other sports. So, that being said, how can we reconnect with those original goals? How do we take back our sport and enhance our pleasure, that of our dogs, and entice others to join the fun?
 - *Recognize those individuals who exemplify that “good guys “do not finish last.
 - *Perhaps it’s time to simply remind each other that we can be serious and dedicated to the task at hand, without taking ourselves so seriously.
 - * Encourage exhibitors to enjoy the ring time with their dog, learn to play from them!
 - *Let us celebrate the win of a good Bull Terrier, period – whether it be ours or another’s.
 - * To encourage those that illustrate that vigorous competition and civility are not mutually exclusive terms. We are all able to appreciate the merit of our competition and the efforts of our competitors.
2. **Fostering a sense of community, enhancing the group environment and working for the whole.**

How do we do this? In short, it is stressing to the membership the orientation should be toward group good over individual achievement. It is each member making a **conscious** decision to work **together** with a shared vision – the long-term preservation and prosperity of the **breed** we love, not just the dogs in our beds. Lending a helping hand to competitors inside and outside the ring. Encouraging everyone from ringside. Remembering to say “Thank you” or give a shout -out to someone’s random acts of kindness. (Click and treat!) We can take a more active part in local clubs and our national club; attending club meetings, dinners, events and raffles. Wisdom comes from the melding of many minds, so remember - RESPECTFULLY voice opinions, ideas or discussion points on club business – this includes social media! It takes the entire membership, and the efforts and ideas of “us” all, to benefit the dogs we love. Be nice, play nice.
3. **Ethics.**

Treating others and being treated with fairness and respect. Fair play, honesty, courtesy, treating others as you wish to be treated. Play well with others. Listen more than you talk. Be courageous and accept responsibility for personal actions. Don’t blame others when you lose, and especially not your dog or the judge. Win, lose, or draw, be persistent. Maintain self- control, winning and losing with grace and perspective. Share. Look out for the welfare of all. Deal fairly with all. Be willing to share open and honest disclosure of your dogs’ assets and deficits for the improvement of the breed. Not speaking poorly of others breeding stock, lines or ethics. Please don’t rumor monger or gossip. Don’t break the rules to gain advantage.
4. **Mentor.**

Welcome, encourage and support newcomers to our sport, (mentor) educate where we have knowledge and experience.

In pets, conditions affecting the eyes are quite common and potentially serious. They can range from simple eye irritations to serious and life threatening diseases. The following article highlights a problem that crops up from time to time in Bull Terriers, ... 'Dry Eye'.

What is Dry Eye?

Keratoconjunctivitis sicca (KCS) is also called dry eye. This condition is due to a deficiency in tear production and results in a red eye with a thick mucous discharge. The tear production is measured by the Schirmer Tear Test. A standardised paper strip is gently placed on the eye and allowed to absorb tears for one minute. Wetting values of less than 15 mm per minute are abnormal.

Below are two dogs with dry eye. The cornea is the clear front part of the eye. Part of the reason it is clear is because the tears bathe the eye to keep it moist and smooth. In dry eye, the lack of tears results in the cornea trying to turn into skin. Blood vessels, pigment and thickening of the cornea occur so that the cornea appears dull and cloudy (photo on the left below).



Tears are made of mucous, water and oils. Dry eye is a deficiency of the water (aqueous) part of the tears. Animal's with dry eye therefore accumulate a lot of mucous (photo to the right above). The nostril on the affected side is usually dry too because normally, tears flow from the eyes, through the tear duct, to the nostrils.

Why does this happen?

Acute dry eye results in a very red and painful eye with some discharge. This may be associated with viral diseases, trauma, drug toxicity (some types of antibiotics), allergens, or anaesthesia. Chronic dry eye results in an off and on red eye with a profuse, ropy, thick discharge that adheres to the eye. Without treatment, the cornea may eventually pigment and scar to result in loss of vision. This can be

familial in certain breeds, associated with immune-mediated diseases, secondary to chronic inflammation of the eye, or idiopathic (no known cause).

How long will this problem last?

Sometimes the condition resolves and spontaneous tear production begins. The acute form is more likely to resolve. Chronic dry eye may or may not resolve, and those animals with lower tear values are harder to control. Medical therapy may need to be given for the lifetime of the animal. If medical therapy fails, surgery to transplant a salivary gland duct into the eye can sometimes help control the problem.



The importance of recheck visits.

The tear test should be repeated to monitor progress and improvement in tear production. Premature discontinuation of the treatment can allow the condition to worsen. Due to corneal pigmentation and scarring, the condition can cause blindness if left untreated.

How is this treated?

Acute dry eye frequently has corneal ulcers associated with it and they must be treated aggressively with antibiotics and tear replacement. Both acute and chronic dry eye are treated by topical tear substitutes as well as stimulation of existing tear production. Cyclosporine ointment is used to increase tear production and reduce inflammation. Sometimes

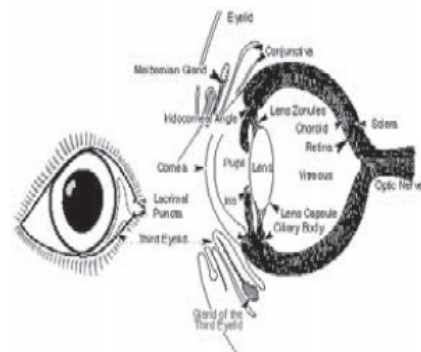
cyclosporine used twice daily can control the problem effectively without additional medications.

Sometimes topical antibiotics and/or steroids are used in treatment of dry eye. The tear film has natural antibacterial action which is replaced by antibiotic therapy. Anti-inflammatory drugs are frequently used to help control scarring and irritation.

It is important to clean accumulated mucous from eyes or lids with eye wash and cotton balls prior to instilling medications. Be sure to keep all medications out of the reach of children. Follow the medication schedule that you will be given. Premature discontinuation of medication is the most common cause of treatment failure.

Important to know.

If your pet is on topical steroid (hydrocortisone, dexamethasone, or prednisolone), always call your veterinarian if any pain (squinting) develops. If a corneal ulcer develops, topical steroids must be discontinued immediately. When in doubt, stop topical steroids until the eye is checked by your veterinarian.



PLEASE NOTE:

Many conditions can affect an animals eyes. The condition mentioned on this page is one of the more common.

For complete advice please consult your veterinarian, but don't delay - eye conditions in pets can be very serious.

The Bull Terrier Club of Victoria Inc.

Statement of Revenue & Expenditure February 2015

Balance as at 04/02/15 \$ 6606.95

REVENUE:

Membership \$ 35.00

Total Revenue \$ 35.00

EXPENDITURE:

Dogs Vic. Non Memb, Levy \$ 60.00

Trophy Show Medallions \$ 348.00

Trophy Show Sashes \$ 227.24

Champ Show Sashes \$ 300.00

Consumer Affairs – Audit \$ 53.00

D. Patterson – Stamps \$ 70.00

J. Smith – Promo. T-shirts \$ 124.65

Trophy Show Ring Hardware \$ 203.95

Total Expenditure \$ 1386.84

Balance as at 03.3.15 \$5255.11

Unpresented Cheques : G Frith \$199.97 (Club Gazebo) , Knox Pets In The Park \$45.00, G Revill \$50.00 (mugs for champ show), S. Wakefield \$22.00 (Calendar Postage)

Term Deposit \$9269.36 due to mature 13.04.15 interest [rate@3.10%](#)

Entries close 3rd November 2015.

Judge: Mr. Les Greenall

K.C.C. Park, 655 Westernport Highway, Skye

Speciality Show to commence at 9.00am

"Direct Deposit payments of entries accepted with emailed receipt as proof of payment"

BSB 633 108 Account number: 125398453 email address bullterrierclubvictoria@gmail.com

OR

Enter ONLINE at www.showmanager.com.au

All enquiries to the Show Secretary on 03 5998 7493 please no calls after 8pm.

Please make all cheques payable to: **Bull Terrier Club of Victoria Inc.** (Please note that entries will not be accepted without fees paid in full).

Members Entry for Champ. show:	Non-Members entry for show:
\$15.00 per entry	\$20.00 per entry
\$10 Baby Puppy	\$10 Baby Puppy

* Combined Catalogue: \$10.00 (includes both shows)

* Catering will be available.

Advertising pages \$20 per page 'must be "copy ready". No later than 25th October to David Hirst

Classes to be judged in order: Dogs 1, 2, 3, 4, 5, 10, 11, 18

Bitches 1A, 2A, 3A, 4A, 5A, 10A, 11A, 18A

Trophies and Sashes for all "In Show" awards.

R.O.M. Points available for Speciality show

This Event will be held in accordance with VCA Regulations, Codes, Policies & Procedures (Effective 14 February 2013)
Please note Rule - 7.5.25 No handler or exhibit shall enter the judging ring wearing or bearing any item which identifies by name, prefix, position or distinctive style an exhibit, exhibitor, breeder, sponsor or award; exhibit numbers excepted.

The Bull Terrier Club of Victoria Inc. Reserves the right to refuse any entry.



Championship Show

29th November 2015

Entries close 3rd November 2015.
No late entries, No exceptions

Judge: Mrs. Gail Buckley

Show to be held at

K.C.C. Park, 655 Westernport Highway, Skye

Championship Show to commence at conclusion of Speciality Show,
but not before 1-00pm

Entries to: Mr David Hirst, 60 Rutherford Parade, Warneet 3980

"Direct Deposit payments of entries accepted with emailed receipt as proof of payment"

BSB 633 108 Account number: 125398453 email address bullterrierclubvictoria@gmail.com

OR

Enter ONLINE at www.showmanager.com.au

All enquiries to the Show Secretary on 03 5998 7493 please no calls after 8pm.

Please make all cheques payable to: **Bull Terrier Club of Victoria Inc.** (Please note that entries will not be accepted without fees paid in full).

Members Entry for Champ. show:	Non-Members entry for show:
\$15.00 per entry	\$20.00 per entry
\$10.00 Baby Puppy	\$10.00 Baby Puppy

* Combined Catalogue: \$10.00 (includes Both shows)

* Catering will be available.

Advertising pages \$20 per page 'must be "copy ready". No later than 25th October to David Hirst

Classes to be judged in order: Dogs 1, 2, 3, 4, 5, 10, 11, 18

Bitches 1A, 2A, 3A, 4A, 5A, 10A, 11A, 18A

R.O.M. Points available for Championship show

This Event will be held in accordance with VCA Regulations, Codes, Policies & Procedures (Effective 14 February 2013)
Please note Rule - 7.5.25 No handler or exhibit shall enter the judging ring wearing or bearing any item which identifies by name, prefix, position or distinctive style an exhibit, exhibitor, breeder, sponsor or award; exhibit numbers excepted.
The Bull Terrier Club of Victoria Inc. Reserves the right to refuse any entry.

Sponsorship for November Specialty Show

Please email the club bullterrierclubvictoria@gmail.com or phone the Trophy Officer David Hirst if you wish to sponsor a trophy or sash.
Les Greenall

Class	Trophy (\$20)	Sash (\$15)
Best in Show		Ross & Eve Brennan
Runner Up in Show		Ross & Eve Brennan
Best Dog	Paul & Natalie Reitmier	Ross & Eve Brennan
Best Bitch	Paul & Natalie Reitmier	Ross & Eve Brennan
Best Baby Puppy		Ross & Eve Brennan
Opposite Baby Puppy		
Best Minor Puppy		Ross & Eve Brennan
Opposite Minor Puppy		
Best Puppy		Ross & Eve Brennan
Opposite Puppy		
Best Junior		Ross & Eve Brennan
Opposite Junior		
Best Intermediate		Ross & Eve Brennan
Opposite Intermediate		
Best Australian Bred		Ross & Eve Brennan
Opposite Australian Bred		
Best Open		Ross & Eve Brennan
Opposite Open		
Best Neutered		Ross & Eve Brennan
Opposite Neutered		



ANIMAL NATURALS

2015 BTCV SPONSOR!!!!

<http://animalnaturals.com.au>

15% discount for BTCV Members
Enter BTCV in coupon area when ordering online.

PEAK MUSCLE™

World's first K9 Gainer Supplement

FOR

***For Big Dogs
Muscle Gain!!***

HOW TO

Mix in to any food, wet or dry. Begin with 1/2 scoop, building up to full amount per dog's weight over two week period. Daily amount can be divided among feedings.

SIZES

Available in 4 lbs.

INGREDIENTS

Rice bran, Chicken fat, Maltodextrin, Creatine, Whole Egg, Cooked chicken, Total Milk Protein, TMG, L-Citrulline, Sodium chloride, Vitamin E Supplement, Ferrous Sulfate, Ascorbic Acid (Source of Vitamin C), Vitamin A Palmitate, Zinc Sulfate, Niacin Supplement, Biotin, Vitamin D3 Supplement, Vitamin B12 Supplement, Riboflavin, Pantothenic Acid, Rosemary, Citric Acid, Brewer's Yeast Powder, Pyridoxine Hydrochloride, Thiamine Monohydrate, Manganese Sulfate, Potassium Iodide, Copper Carbonate, Folic Acid, and Cobalt Carbonate, L-Leucine, Fenugreek seeds.



an **Animal Naturals** brand
Animal Naturals Australia
www.animalnaturals.com.au
1300 131 644

FEATURES

- Egg, chicken, and milk proteins
- Leucine and creatine
- Rich in gamma oryzanol
- Built in multivitamin
- Developed by experts



Available from:



Bull Terrier Club of Victoria Inc.

Affiliated with the Victorian Canine Association Inc.
& The National Bull Terrier Council (Australia).

A0026517R

PO Box 1635 Melton West Vic 3337

<http://www.bullterrierclubvic.com>

email: bullterrierclubvictoria@gmail.com



Minutes

Meeting	Venue	Time	Date
Special General Meeting	1/147 Liardet St, Port Melbourne Park in the Coles upstairs parking. Venue is a community centre (Liardet st side of carpark) with a glass door and a ramp. Meeting room is at the end of the long corridor.	10AM	Sunday 22.2.15
Chair	Meeting Opened	Abbreviations	
Les Greenall	10:15am	(NBTC) National Bull Terrier Council Australia (DV) Dogs Victoria (SGM) Special General Meeting	

Attendees – Tony DiFresco, Neil McCracken, David Hirst, Adam Combes, Deborah Patterson, Sandi Johnson, Hugh Marshall, Bernadette Marshall, Sherri Wakefield, Les Greenall, Jen Woodsell, Sherri Wakefield, Jacqui Smith, Kaye McCracken, Shane Humphrey, Sharelle Humphrey, Leigh Pride, Lance Stephenson
Via Phone: Bec Campbell, Bill Campbell

Total attendees: 18 in person, 2 via phone.

Apologies – Alison Sutcliffe, Ginna Frith

Items on Agenda

1	<p>Urgent Business - Appointment of replacement Trophy Show Judge with the withdrawal of Eric Stanley. Nominations received are Pat Dandridge and Joanna Phillips.</p> <p>Show secretary advises that Pat Dandridge has withdrawn nomination. Bernadette Marshall nominates Joanna Phillips. Secretary asks if anyone wishes to see her resume. Show Secretary advises that Joanna is available on the date required and will come for \$1500 fee and two nights accommodation. She meets ROM point criterion.</p> <p>Audience votes unanimously in favour of Joanna. Show Secretary to contract her asap. Secretary is asked if Eric's withdrawal has been received in writing. Secretary advises PO Box checked yesterday and no written withdrawal received. Eric has only withdrawn verbally in phone conversation with Show Secretary (David Hirst).</p> <p>Before meeting continues, Chairperson advises audience to keep meeting concise and only one person to speak at a time. Some discussion ensues about the rules of members being present by phone.</p>
2	<p>Minutes from SGM dated 31.8.14 read out by Sherri Johnston.</p> <p>Business arising – Secretary advises that Life Members of BTCV were all written to and invited to Trophy Show Dinner as per motion. Responses received from two life members only. But has to chase up two maybes.</p>

3	Minutes from SGM dated 14.12.14 read out by Sherri Johnston. No business arising Minutes for both SGMS moved: Kaye McCracken Seconded: Sherri Johnston.
4	<p>Treasurers Report/Accounts payable: Financials read out:</p> <p><u>Statement of revenue NOVEMBER 2014</u> Balance as at: 3.11.14 \$7148.33 Revenue \$ 923.40 <i>(\$77.50 memberships, \$75 Open show entries, \$80.90 Promo sales, \$104 raffle (less \$25 for Watkiss taxi), \$566 auction, \$20 Champ show catalogues).</i> Expenditure \$ 1943.53 <i>(\$47.25 newsletter postage, \$123.32 Champ Show Catering, \$396 VCA levies, \$518.46 Champ Show sashes, \$60 Watkiss raffle items, \$230 Watkiss trophies, \$85 Watkiss accommodation, \$70 stamps, \$400 raffle vouchers, \$13.50 registered mail for vouchers).</i> Balance as at: 1.12.14 \$6128.20</p> <p><u>Statement of revenue DECEMBER 2014</u> Balance as at: 3.12.14 \$6128.20 Revenue \$1492.05 <i>(\$100 memberships, \$757.05 calendars, \$175 open show entries, \$330 promo, \$130 BBQ Open show)</i> Expenditure \$931.51 <i>(\$125.69 Open Show catering, \$219.99 calendar printing, \$376.50 Dogs Vic invoices, \$149.33 Champ show entries, \$60 Dogs Vic Open show levies)</i> Balance as at: 3.1.15 \$6688.74</p> <p><u>Statement of revenue JANUARY 2015</u> Balance as at: 4.1.15 \$6688.74 Revenue \$ \$78.50 (membership & calendar) Expenditure \$160.29 (calendar postage, NBTCA affiliation fee, Port Melb meeting room) Balance as at: 3.2.15 \$6606.95</p> <p><u>OPEN SHOW REVENUE/EXPENDITURE</u> Revenue \$715 (Entries, catalogues, promo, BBQ) Expenditure \$266.86 (catering, VCA levies, computer sashes) Total Profit \$448.14</p> <p><u>BULLY WALK FEB 8TH REVENUE/EXPENDITURE</u> Revenue \$161.70 (BBQ/Raffle) Expenditure \$0 (everything donated by Committee in attendance) Total Profit \$161.70</p> <ul style="list-style-type: none"> • Unpresented Cheques (consumer affairs \$53, Knox pets in park \$45, Gayle Reville mugs/trophies \$50, Ginna Frith for gazebo \$199.97, Dogs Vic non-member levy \$60) • Term deposit – \$9269.36 due to mature 13.4.15 at rate 3.10%) <p>Moved: Jacqui Smith Seconded: Bernadette Marshall.</p>
5	<p>Voting on judges for 2015 & 2016 Champ and Specialty shows (Australian judges) Les Greenall leaves chair and Sherri Johnston chairs meeting.</p>

	<p>November 29th KCC Park – Nominations received for Gail Buckley & Les Greenall. Judges are automatic as no other nominations. Gail will do Championship Show and Les Greenall to do Specialty show.</p> <p>Les Greenall returns to chair meeting.</p> <p>April 30th & May 1st 2016 Bulla – Nominations received for Kerry King/Patricia Whincop/Pamela Brown. No other nominations from the floor.</p> <p>Secretary advises that resumes are available to view if anyone desires. Vote takes place:</p> <p>Kerry King: 12 For, 1 against, Abstain 7</p> <p>Patricia Whincop – All abstain</p> <p>Pamela Brown – 18 for, 2 abstain</p> <p>Sharelle Humphrey nominates Patricia as reserve if one of the contracted judges pulls out. All present agree.</p>
6.	<p>National Council Business</p> <p>NBTCA 3/15 NOTICE OF MOTION</p> <p>Notice of Motion proposed by the Bull Terrier Miniature Club of Victoria that was carried at their SGM held on 7/12/14.</p> <p>"That the NBTCA produce a <u>biennial</u> book at the conclusion of the Trophy Shows to contain only the full results of the Trophy Shows and all the Bull Terrier/Bull Terrier Miniature Speciality shows".</p> <p><u>Rationale</u></p> <p>To keep a record of Bull Terriers and Bull Terriers Miniatures wins of the now and for the future records, by not just show casing the big in show winners but also include the class winners as they are just as important to the journey of our breed. This Proposal is desperately needed to the breeding / showing history of Australia . Australian Bred Bull Terriers and Bull Terrier Miniatures are as good as or even better than other those around the world. But there is one thing that the other countries do better than us; - Record keeping & Documenting., There is a huge lack of this here in Australia, which is very sad considering the quality of Bull Terriers and Bull Terrier Miniatures we have. We have the Rom system, but it only represents a small percentage of record keeping and does not capture all the events & activities held for Bull Terrier and Bull Terrier Miniatures throughout Australia.</p> <p>By introducing a bi-annual book, this would document and preserve the journey of Bull Terriers and Bull Terrier Miniatures in Australia for years to come. The advantage of a book would be to show case Australian Bull Terriers and Bull Terrier Miniatures to the world and for the upcoming new breeders of the future to be able to reflect on and learn.</p> <p>Debate on motion ensues:</p> <p>Member Shane Humphrey reports:</p> <ul style="list-style-type: none"> • NBTCA should produce it and pay for it as they have in excess of \$20,000 in bank. • That Di Cross, Secretary of National Council is currently producing her own book and this motion would be in competition with that. <p>Secretary (Deb Patterson) speaks re motion:</p> <ul style="list-style-type: none"> • Advises that Di Cross making her own book is hearsay and irrelevant to motion. • There is no evidence that NBTCA have that much money in the bank and will request to see financials. • The NBTCA's only income stream is from yearly club affiliation fees and past books that didn't sell. • It is unfair to expect the NBTCA Secretary to do this, club secretaries have enough to do.

Bill Campbell advises a book would give newer breeders a good reference.

Lance Stephenson advises that:

- NBTCA would not have the funds and perhaps state books would be better and to let a private person do it.
- That the only reason the 4th BT book was able to be financed was due to charging for advertisements.

Sharelle Humphrey suggests book would self-fund on sales.

David Hirst advises:

- That there are surplus of 2, 3 & 4 Australian BT books still available.
- In England the club does not produce the book, private individuals do it.

Shane Humphrey and Bill Campbell both advise they would be happy to fund the book.

Vote Held that the National Council Produce a book as per motion.

For: 7

Against: 8

Abstain: 5

Motion Lost

NOM 16/15 from ACT received Feb 21st was read out.

. "The production of a book be discussed at the next meeting of the NBTCA in May"

Rationale:

Whilst the club has voted 'yes' on the production of a book further discussion is required. All members appreciate that a history of the breed is required and this has been a discussion amongst BT people for a long time. Whilst we appreciate that books are a record, from previous experience, the expertise required and all that is associated with a book production makes a difficult process. Bearing this in mind and rising costs, limited numbers etc we believe that other avenues should be investigated as a means of keeping records:

1. Currently the ACTBTC has all show critiques available on its website - it is suggested that other clubs could do the same or all critiques could be placed on the NBTCA website with a page for each club.
2. An e-book could be produced.

Vote Held:

For 17

Against: 1

Motion carried.

NBTCA 12/15

Dear Secretary, the ANKC will be holding a National Breed Councils meeting on 13th June 2015. They are requesting agenda items by 31st March 2015. Any agenda items must be submitted with a clearly outlined motion/item together with a detailed rationale as to the reason for submitting the item for consideration. Please note that there is a very tight turn around and any agenda items submitted by clubs need to go to other clubs for approval.

Motion was read out and no one from floor had any issues they wish raised.

NBTCA 17/15 Notice of motion received 19.2.15

"The Bull Terrier Club of QLD would like to put forward the following notice of motion; We as a club feel that, after due consideration, the Miniatures are in sufficient numbers and quality that after 25 years plus of interbreeding with Bull Terriers that this is no longer required."

	<p>Motion is read out by Secretary. Shane Humphrey requests that motion be read out again as Secretary had corrected the spelling and grammatical errors when she read it out. Motion was re-read as written.</p> <ul style="list-style-type: none"> • Discussion that motion is not written correctly and contains no rationale. • Shane Humphrey argues that this would be similar to stopping bull terrier breeders importing semen. • Sharelle Humphrey and Bill Campbell argue that this should be left to the mini club to decide as banning it takes away their choice. • Lance Stephenson advises that the last interbreeding extension was underhanded, Shane Humphrey advises that there is no proof of this. <p>David Hirst moves motion "That the Victorian Club support the QLD Motion"</p> <p>A vote is held: For – 6 Against – 4 Abstain – 7 Motion carried.</p>
7.	<p>Sharelle Humphrey nominates for appointment to BTCV committee. Moved: Sharelle Humphrey Seconded: Shane Humphrey Sharelle advises that she wishes to come onto committee now as she believes the existing committee will need help with the upcoming trophy show. When asked about her previous resignation, she responds that at the time of resignation there was too much conflict within the committee and it was best that she resign. Also that other members who resigned around the same time are now back on board. Several members raise the fact that they believe her position as President of the BTMCV is a conflict of interest. Leigh Pride and Sandi Johnson were not happy about the allegations printed about them in the newsletter when Sharelle was president and request that a secret vote is held. It is advised that three people must request a secret ballot. Leigh Pride, Lance Stephenson and Neil McCracken all request a secret ballot. Ballot is held, with Les Greenall (chair) taking the two votes via phone. For – 5 Against – 12 Abstain – 1 Motion fails. Secretary advises that anyone wishes to come onto committee may apply at the AGM.</p>
8.	<p>General Discussion Shane Humphrey requests that revenue/expenditure reports from when Leigh Pride and Sandi Johnson were on committee be compared with present day. Secretary advises that Shane Humphrey was treasurer after the resignation of Leigh and Sandi and that by his own admission, nothing untoward was found.</p> <p>The committee is asked if there is a higher cost involved holding the trophy show at PGL, than an ordinary VCA ground. Sharelle advises that the club saves on the VCA levy and that the show secretary should know the costs of this. It is \$1 less at a non VCA venue.</p> <p>Les Greenall advises audience of the trophies he is making for the Championship show, and he is looking for a sponsor for RUBIS. Kaye McCracken volunteers to sponsor this trophy.</p>

Meeting Closed: 11:26am

Sponsorship for November Championship Show

Class	Trophy (\$20)	Sash (\$15)
Best in Show		
Runner Up in Show		
Challenge Dog		
Challenge Bitch		
Best Baby Puppy	Paul & Natalie Reitmier	
Opposite Baby Puppy		
Best Minor Puppy		
Opposite Minor Puppy		
Best Puppy		
Opposite Puppy		
Best Junior		
Opposite Junior		
Best Intermediate		
Opposite Intermediate		
Best Australian Bred		
Opposite Australian Bred		
Best Open		
Opposite Open		
Best Neutered		
Opposite Neutered		

Don't Forget our Raffle!!!!

BTCV 2015 Raffle tickets are available for purchase for \$5 each. Raffle drawn at BTCV Champ Show 29th Nov 15.

1st Prize - Laidarbull Show Trolley (able to use as a double or single) or \$250 Bunnings or Coles Myer Gift Voucher

2nd Prize - Vebo 36# dog crate or \$100 Bunnings or Coles Myer Gift Voucher

3rd Prize - Cool Champions Oilskin dog coat (2 sizes to choose from) or \$50 Bunnings or Coles Myer Gift Voucher

PLEASE RETURN ANY UNSOLD TICKETS ASAP SO WE MAY SELL TO OTHERS!!!!

b+cv 2015 raffle



1st prize laidarbull show
trolley or \$250 bunnings/
coles myer gift voucher

2nd prize vebo 36"
dog crate or \$100
bunnings/coles myer
gift voucher

3rd prize cool champions
oilskin dog coat or \$50
bunnings/coles myer gift
voucher

\$5
per
ticket

thank you to
our sponsors.
drawn at
champ show
29th nov 15



VEBO PET
www.vebopet.com.au

Laidarbull Trolleys 0415049703

We can make you any trolley for all your show needs.
Heavy duty and lightweight aluminium construction.



T30 welded for durability.

Providing the strength needed to ensure you can
carry your equipment on top and also groom your
dog with ease.

Crate and floor constructed with Alutic
composite panel with pyramidal coating.



No need to worry or cut away, attached with
full length piano hinges.

No fixed wheels attached for ease of movement, with brakes for safety.
All enquiries welcome.



Located in Southfield South Australia. Interstate business enquiries can be organised.

Coles Group & Myer Gift Card



Cool Champions WARM AND COZY DOG COAT



Water Proof
Oilskin fully lined
in luxurious
sherpa fleece

**BUNNINGS
warehouse**

Gift Card

PICCOLAGE

Bull Terrier Club of Victoria Inc

Affiliated with the Victorian Canine Association Inc.
& The National Bull Terrier Council (Australia).
A0026517R



PO Box 1635, Melton West Vic 3337

<http://www.bullterrierclubvic.com>

email: bullterrierclubvictoria@gmail.com

agenda

Meeting	Venue	Time	Date
Annual General Meeting	Bulla Exhibition Centre, Uniting Lane, Bulla	7:30pm	Friday 27 th November 2015
Chair	Meeting Opened		

Attendees –

Apologies –

Item	Discussion	Action
1	Review of previous minutes:- The minutes of the previous AGM held on 15 th November 2014	
2	Business arising from previous AGM: -	
3	NBTCA Motions:- If any	
4	Audit Report:-	
5	Committee Reports:-	
6	Nomination and Election of Office Bearers: All two year positions Secretary Vice President 3 x Ordinary Committee members	
7	Judges nominations and voting:	
8	Motion 1 Moved: D Hirst That the B.T.C.V. cease the practice of allowing members to participate in A.G.M.s, G.M.s, & S.G.M.s via electronic media. <u>Rationale</u> That the B.T.C.V. does not have the facilities to accommodate every member who may wish to participate via electronic media, also there is no practical way of establishing the person's identity. Motion 2 Moved: A Sutcliffe That the amount of \$350.00 that the committee can spend without the members permission be lifted to \$500, and members be notified by email if amount is to be exceeded. <u>Rationale</u> The amount of \$350 is too restrictive and due to non attendance of general meetings, members should be advised via email.	
Chair	Signature	Meeting Closed



Bull Terrier Club of Victoria Inc

Affiliated with the Victorian Canine Association Inc.
& The National Bull Terrier Council (Australia).



PO Box 1635, Melton West Vic 3337

<http://www.bullterrierclubvic.com>

email: bullterrierclubvictoria@gmail.com

NOMINATION FORM FOR VACANT COMMITTEE OF MANAGEMENT POSITIONS FOR 2015/2016

Positions available for nomination (all two year positions)

1 SECRETARY (EXPIRES 2017):

1 VICE PRESIDENT (EXPIRES 2017)

1 COMMITTEE (EXPIRES 2017)

1 COMMITTEE (EXPIRES 2017)

1 COMMITTEE (EXPIRES 2017)

1 COMMITTEE (VACANT - RENEWS AGM 2016):

1 COMMITTEE (VACANT - RENEWS AGM 2016):

1 COMMITTEE (VACANT - RENEWS AGM 2016):

Nomination form:

I hereby nominate _____

For the position of _____

Signed (Nominator) _____

Accepted (Nominee) _____

Nomination forms must be received in writing, by the Secretary by 6th November 2015.
(no later than 21 days prior to scheduled AGM meeting date of 27th November 2015).



Ingredients that matter...



Holistic super premium pet food Australian Made & Owned

- Essential omega 3's & 6's
- No Artificial colours
- No Artificial flavour
- No Artificial Preservatives
- Non GMO
- Hormone free
- Antibiotic free
- Complete and Balanced
- Added Emu Oil



WITH ADDED
EMU OIL

Please visit our website for retail outlets and wholesale information:

www.blackhawkpetcare.com

Bull Terrier Club of Victoria Inc.

2015 Trophy & Championship Show

Sponsorship Team

BlackHawk PROFESSIONAL Ingredients that matter...



Holistic super premium pet food
Australian Made & Owned

- Essential omega 3's & 6's
- No Artificial Colours
- No Artificial Flavour
- No Artificial Preservatives
- Non GMO
- Hormone free
- Antibiotic free
- Complete and balanced
- Added Emu Oil

With added 80% OIL

Please visit our website for retail outlets and wholesale information:
www.blackhawkpetcare.com



Leidarbull Trolleys 0415049703

We can make you any trolley for all your show needs.
Heavy duty yet lightweight aluminium construction.

T10 welded for durability.
Providing the strength needed to ensure you can carry your equipment on top and also groom your dog with ease.

Lids and floor constructed with Alulite composite panel with pyramed mouting.

No need to warp or rot away, attached with Full length piano hinges.

No fixed wheels attached for ease of movement, with brakes for safety.
All enquiries welcome.

Located in Smithfield South Australia, interstate buyers welcome freight can be organised.



the healthy way to treat your pet

VEBO PET
FOR CAGES & ENCLOSURES

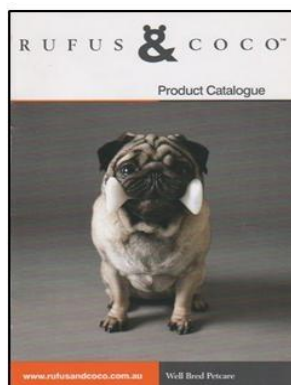


www.tuffdogcoats.com.au

Free Call 1800 TUFF DOG

Bespokeartframing

FRAME | PRESERVE | DECORATE



Pawches n Cream

EZYDOG

Silver Eagle
OUTFITTERS
Australia



Jetpets
The trusted pet travel experts



special
THANK YOU
to our sponsors

