

The Bull Terrier Club of Victoria Inc.

(Incorporated A0026517R)



Winter 2024 Bully News



COMMITTEE

President: Jen Woodsell

VP: John Williams

VP:

Treasurer: Dean Garraway

Secretary: Deborah Patterson

Show Secretary:

Website:

NBTC(A) Delegate: Sharelle Humphrey

Newsletter: Deborah Patterson

General Committee: Staci Garraway

General Committee:

All Correspondence and Enquiries:

Post

Bull Terrier Club of Victoria Inc.

Attention: The Secretary

PO Box 1635

Melton West Vic 3337

Email

bullterrierclubvictoria@gmail.com

Web

www.bullterrierclubvic.com

Life Members

Vin and Shirley Healand

Alison Sutcliffe

Les Greenall

Cathy Sluga

Wilma Rawlings

Daryl Munn

Norm Jessup

Neil McCracken

Disclaimer:

Every care has been taken in the compilation of this magazine, but the Editor and the club assumes no responsibility for errors or omissions or any effects arising there from. Opinions expressed in these pages, whether in articles or advertisements are not necessarily the opinions held by The Bull Terrier Club of Victoria Inc.

President's Report

Hi Everyone and welcome to our Winter 2024 Newsletter. Winter is certainly here.....

Our Shows, held on the 4th of May, went off without a hitch. We were lucky enough to fluke some lovely weather which enabled us to hold the Shows outside, it was a bit chilly but sunny.

Big thanks to everyone who entered, particularly the Interstate exhibitors who made the trip to Melbourne to support the Club and exhibit under our UK Judges, Elaine Clark & Verity Fox and our Open Show judge Sylvia Meekings. Sylvia was also the ring steward for the 2 Champ. Shows.

A HUGE thank you to the Bull Terrier Miniature Club of Victoria for arranging the billeting of our UK judges with Julie. Julie also entertained the judges by taking them to some Aussie sightseeing spots, which our Club, and the judges greatly appreciated.

Sharelle has decided to step down as the Clubs Vice-president & Show Secretary. Personally and on behalf of the Club I'd like to thank Sharelle for all her hard work as Show Secretary. Sharelle has created some amazing trophies for the Club to use at our Shows, as well as items for me to Auction or raffle for the Club.

Our monthly Statue auctions are still very popular & hotly contested, they are a great way to support the Club and if your lucky enough to be the winning bidder, you end up with a gorgeous new Bully statue.

Our next Bully Walk will be held on the Sunday 1st September. I'm still trying to lock in a venue, keep your eyes peeled for updates. Big thanks to the organisers of the Bullie Walk in Bendigo. From all reports it was well supported.

If your not already following the Clubs Facebook page, jump on and join. All information about upcoming events, raffles, auctions and of course plenty of video's, pictures and useful information is posted regularly.

Ok that's me out. Until Spring hits.... stay warm.

Cheers Jen (BTCV President)

Memberships are now overdue!

Secretary Report

Hi Members,

A big thanks to all those members who are selling our raffle tickets. It is very hard to think of different fundraisers that can be offered to the general public, but cash is king so I hope you will all try and sell a few tickets. We really need them all sold, with our entries declining so much over the years, without constant year round fundraising, we cannot put on great shows.

I also want to thank everyone who attended our May shows. When I first became involved in the club and showing, we were attracting around 150 entries per show, we are now down to the low twenties, I hope *it doesn't get worse.*

I would like to thank Sharelle Humphrey for her fabulous contribution to the role of Show secretary and trophy officer. Unfortunately, now this work will largely fall on an already short committee unless we get a replacement. A huge thanks to all of our exhibitors who helped us pack up the show. And of course a big thanks to all our sponsors.

Cheers Deb

Secretary BTCV

QUEST HOTELS - DISCOUNTED STAY FOR DOGS VICTORIA BOOKINGS

Quest Hotels is generously offering a discount to all Dogs Victoria members and Dogs Victoria related bookings at their Narre Warren and Frankston locations.

Use the promo code **DOGSVIC15** when making a booking to receive a 15% discount when staying with either property. The code is valid on all room types (studios and 1, 2, & 3 bedroom apartments) all year round.

[View Quest Frankston Here](#)

[View Quest Narre Warren Here](#)

Both hotels are pet friendly and located within a 20 minute drive of KCC Park. This would be perfect for judges accommodation!

A0026517R

Raffle

Tickets can be purchased directly from the secretary
bullterrierclubvictoria@gmail.com
Or through facebook

BSB: 633000
Account # 125398453

1st prize - \$2000
2nd prize - \$1000
3rd prize - \$500
Drawn 10/11/2024

500
Tickets
\$20 ea

Tickets can also be purchased via Show Manager

<https://showmanager.com.au/activity/2521>

Note to All Exhibitors

Please be mindful of how you leave the grounds when you are packing up after shows. Our club was reprimanded by Dogs Victoria after our last show for large amounts of chalk left on the grass and footpath, and general rubbish that had blown across the grass. I did argue that we have no undercover grooming area and that previously chalk on the grass was never an issue but they were unhappy and are clearly cracking down on it as evidenced by a recent rule change.

Please remember that our club can be penalised for leaving grounds untidy at venues. All exhibitors should bring a brush and pan or use water to clean up chalk spills and use a drop sheet if you are using large amounts of chalk. Also, please notify committee if there has been an accident that needs cleaning as we may be able to help out with cleaning implements. I can say that when I was packing up, I didn't even see the chalk or rubbish.

Please see newly implemented Dogs Victoria rule below.

Thanks

BTCV Secretary

Regulation Changes Effective 15 July 2024

Changes to VCA Regulations

Effective 15 July 2024

PART 7 REGULATIONS – CONFORMATION

7.5 PROCEDURES AT EXHIBITIONS

Regulation 7.5.12

Be amended to read

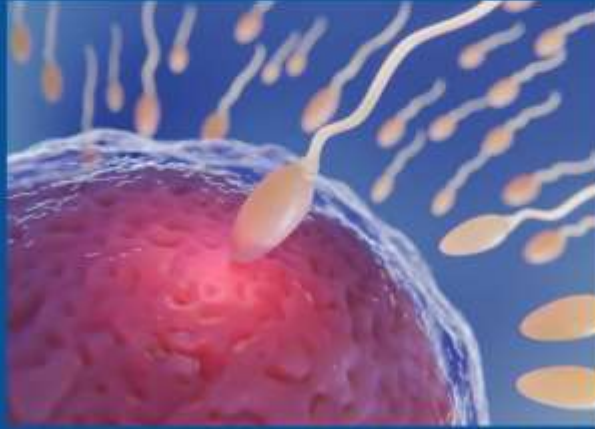
At all times an exhibitor shall be responsible for cleaning up and the removal of droppings left by their exhibit.

This includes any grooming waste within the environs of the event, including vehicle and camping areas. (Amended 15/07/24) (15/04/16)



Be like Bull terriers,
absolutely obedient,
heavenly angels!

K9 CONCEPTIONS



PROGESTERONE TESTING

ARTIFICIAL INSEMINATION

CANINE SEMEN FREEZING AND STORAGE

CANINE SEMEN COLLECTIONS AND EVALUATION

NATURAL FERTILITY SUPPLEMENTS FOR MALE AND FEMALE CANINES



K9 CONCEPTIONS
Take one capsule with food daily to help support your dog's reproductive system.

SUPPORT YOUR REPRODUCTION

Supplements to support the reproductive system in male and female dogs.
Animal Consumption Only

Each capsule contains: 250mg Green Lippell Mucal Powder, 100mg Vitamins E, 50mg Zinc Sulphate powder

Nutritional supplement product for inclusion in animals feed



K9 CONCEPTIONS
Take one capsule twice a day with food to help support lactation in female dogs.

SUPPORT YOUR MILK PRODUCTION

Supplements to support milk Quantity and Quality in female dogs.
Animal Consumption Only

Each capsule contains: Milk Thistle, Fenugreek, DCP Di Calcium Phosphate, 50mg Zinc Sulphate, Probiotics 15 strains beneficial bacteria

Nutritional supplement product for inclusion in animals feed

Email info@k9conceptions.com to order your Natural Products.

LOCATED IN CENTRAL VICTORIA , ROMSEY.

BY APPOINTMENT ONLY

0461 266 393

EMAIL: INFO@K9CONCEPTIONS.COM

For Sale

"A fine collection of bull terrier statues and books are for sale, owned by Margaret Burgoine. This 40+ year collection can be sold individually or in whole or part lots. Collectors will see the value in these and can contact Rachel Burgoine (her daughter) for more details by email rachb@live.com.au

Bull Terrier Books

Bull Terriers Today - David Harris 1998 (signed)
Full Circle : History of the coloured BT - David O Harris USA 1990 (signed)
Bull Terrier Annuals (USA) 1997 and 2004 numbered limited editions
Bull Terrier Illustrated Standard (USA) 1991
The Book of All Terriers by John T Marvin 196
Bull Terriers by Martin Weil 1988
The New Complete Bull Terrier by Ernest Eberhard 1973
First Australian Bull Terrier Book (#20) BT Club NSW 1988
Second Australian Bull Terrier Book- National BT Council 1993
Fourth Australian Bull Terrier Book - National BT Council 2011
After Bar Sinister by RH Oppenheimer -1969 first edition- rare UK
McMuffin & Co- a Bull Terrier History by RH Oppenheimer - reprinted 1973 UK
All About the Bull Terrier by Tom Horner - UK 1973 first edition signed
All About the Bull Terrier by Tom Horner -1984 reprint UK
Take Them Round, Please: Art of Judging Dogs by Tom Horner -UK 1975 rare
The Souperlative Story : A Bull Terrier Saga by Tom Horner -UK 1987
From James to Jim by WE Mackay-Smith -first ed 1980 USA
Bull Terriers and How to Breed Them by RH Glyn UK 1943 war time edition
Forty Years of Bull Terriers by Gladys m Adlam UK 1952 - rare
The New Bull Terrier by John H Remer Jr. - USA 1989
Bull Terrier by Bethany Gibson - UK 2000
The Jackadandy Heritage by Margaret O Sweeten -UK 1985 signed
Colket Memorial Book of Bull Terriers -BT Club Philadelphia1979
Fifth Colket Memorial Book of Bull Terriers - BT Club Philadelphia
Bull Terriers by Robyn Salyn -UK 1989
Dogs Their Mating, Whelping & Weaning by Kay White - UK 1977 first edition
Your Bull Terrier by Marilyn Drewes -USA 1978
The Bull Terrier by John F Gordon -UK 1973
Iceni Bull Terriers 1975-1995 by Robert & Lynne Myall USA
Bully and the Badger by Wickham Marlins - UK 1974
Our Friend the Bull Terrier -UK 1939
The Bull Terrier Handbook by John F Gordon - UK 1957 first edition
Bull Terrier (a Pet Owners Guide) by Peter Larkin - UK 2000
Group Two Sporting Terriers Breed Standards - Aust National Kennel Council
Daisy Thinks She is A Baby - Lisa Kopper -USA 1994
Daisy is a Mummy - Lisa Kopper - USA 1996

Please note that this is a
Paid Advertisement. All
enquiries must be di-
rected to the seller via
email supplied.
Regards, Secretary.



ATTENTION BREEDERS!

DOPPLER TESTING

Our next Doppler clinics will be on:

Wednesday 31st July 10am

Appointments are at the Werribee Clinic facility (previously UVET) which has now reopened under Green Cross. I have one spot available. Please contact me asap to book as if I don't fulfill minimum numbers I will need to advertise to other breeds.

If you would like to put your name down for one of these or an upcoming clinic or would like more information please contact me directly. Your test results are confidential and the reports are emailed by the cardiologist directly to you.



This is an opportunity to test your breeding stock at a rate of \$350 per animal which is enabled due to having a booking of 4-5 animals.

Cheers Deb Patterson 0403210590

REMINDER!

Membership renewals are due by 30th June

See new membership form at the end of this newsletter.

Renewals paid after 31st July will need to re-apply for membership.



WARDLINN
& CO

wardlinnco.com

- wardlinnco@outlook.com.au
- 0458 270 598
- @wardlinn_co
- /Wardlinnco

Specialising in boutique pet products.
All our leads are hand made by us.



CEN[®]

NUTRITION

EST. 2014

Open Show Results

General Specials

Judged by Mrs S Meekings (VIC)

	Exhibit	Exhibit No
Best In Show	CH KAHA HIGH ROLLER (AI)	5
R/Up In Show	BULLROY PEARL WARRIOR	10
Baby Puppy In Show		
Puppy In Show	BULLPATCHY SIR HEINRICH	2
Junior In Show	POTENS NEEDLE	7
Open In Show	CH KAHA HIGH ROLLER (AI)	5



Best In Show

Runner Up BIS





The benefits of DNA testing

- ✓ Ensures your responsibility as a breeder in maintaining the best standards when it comes to the health of your animals
- ✓ Allows you to screen for relevant diseases – assess genetic status (clear or carrier or affected)
- ✓ Screens for desirable traits such as coat colours & hair length
- ✓ A DNA profile (fingerprint) allows you to verify any stud service, multiple sires and confirm pedigrees
- ✓ Focusing your testing on your breeding stock will allow you to predict outcomes for future litters

So simple, easy & pawfect...

- ✓ DNA collection is via a non-invasive cheek swab
- ✓ Test at any age
- ✓ Orivet's Innovative Full Breed Profiles screen for all diseases and traits relevant to your breed



orivet.com

Innovative Animal Health

Champ Show Results AM

General Specials

Judged by Ms E Clark (United Kingdom)

	Exhibit	Exhibit No
Best In Show	BRASSHEAD PARTY GIRL (AI)	17
R/Up In Show	YANDOMIR KAUZIN HARMONY	16
Baby Puppy In Show	BRAXSTAR MOONSHINE GANGSTA (AI)	1
Puppy In Show	BULLPATCHY LOVE SONG	11
Junior In Show	BULLPATCHY RHETT BUTLER (AI)	3
Intermediate In Show	YANDOMIR KAUZIN HARMONY	16
Australian Bred In Show	BRASSHEAD PARTY GIRL (AI)	17
Open In Show	CH KAHA HIGH ROLLER (AI)	9



Best In Show

Challenge Bitch / Best Australian Bred



Runner Up Best In Show

Res Ch Bitch / Best Intermediate





Challenge Dog
Junior in Show



Baby Puppy in Show

Puppy in Show

Reserve Ch Dog
Open in Show

Elaine Clark critiques

I would like to thank the committee of the BTCV for their kind invitation to judge their Championship show on 4th May 2024 and to all the exhibitors who took the time and trouble to enter under me.

Class 1 – Baby Puppy Dog

1st. **Hansen's BRAXTAR MOONSHINE GANGSTA**

Beautiful puppy, 14 weeks of age, absolutely stunning and showing great promise – no teeth to assess at the moment – but fingers must be well and truly crossed. Beautiful masculine head, broad, wide, deep, lovely expression and filled right up, really well balanced with lovely strong, round bone. He has strong quarters and correct bend of stifle, front a little loose but that's to be expected at this age and I am sure it will tighten. A credit to his breeders.

Class 2 – Puppy Dog

1st. **Cook's BULLPATCHY SIR HEINRICH**

Strong, masculine white with plenty of bone and substance, decent head with a very good expression and correct mouth. Good shoulder but a rather sloping topline, well angulated quarters but would like to see more muscle tone. I am afraid my recorder had a 'blip' at this point and I have nothing recorded on his movement - apologies

Class 4 – Junior Dog

1st. **Cook's BULLPATCHY RHETT BUTLER**

Upstanding strong and very masculine white, oozing bone and substance. Super expression, ears bang on top and a correct bite. To be picky I'd like a little more depth in the profile. Well balanced with a good shoulder, a good deep brisket and spring of rib, he again was rather sloping in topline and his quarters, which had great bend of stifle, tended to camp a little too far out behind which accentuated the slope. I'd like to see him with more muscle tone which would assist him in standing up a little more behind and thus improve the topline. That said, he moved out well behind when he found his pace. Best Junior & Best Dog .

Class 5 – Intermediate Dog

1st. **Hensen's BRAXTAR BORN TO BE BAD**

Upstanding white, 2 years old with a strong head, having super width, fill and a correct bite, ears right on top and a good expression. Well balanced with correct bone for size he had a tendency to crouch a little behind (i've had one of my own who did this!) but, when he stood foursquare he looked the picture with correct shoulder, straight front, level topline and strong quarters with a good bend of stifle.

2nd. **Dowall's JACAMAR GYPSY KING**. I really liked this dog but it was a struggle to assess him. We had a bit of a wrestle to see his mouth - it looked correct at the quick glimpse I got. Strong, masculine head with ears bang on top and an excellent expression. More mature than the winner with good body lines and balance, decent front and strong quarters but it was impossible to assess his movement as he was far too distracted to comply with his handler.

Class 10 – Australian Bred

1st **Yeoh's YANDOMIR BIG GUNS**

Attractive 12 months old white who still has some maturing to do. Correct bone and substance for size he has a good head in profile although, to be picky, I'd like a little more width and fill. Decent shoulder and front but a little long in back, quarters are strong with a correct bend of stifle and he moved out well both ways.

Class 11 – Open Dog

1st. **Sharp's CH KAHA HIGH ROLLER** Very attractive and typey white, of a more terrier type than some of the others here today, he has a really lovely head, having correct arc, width, depth and fill, good expression and a correct bite. Good shoulder and front is good when he gets on his toes. Compact and well balanced with a correct topline, his quarters are strong but I'd prefer a better bend of stifle. He moved out freely both ways but was a little close behind. Best Open Dog and Runner up Dog.

2ND. **Brasshead Kennels CH BRASSHEAD BUTCH CASSIDY** Upstanding, beautifully deep red and white of a completely different type to the winner. Strong masculine head but not the quality of 1st, his bite was correct. Decent neck and shoulder and good front with a good deep brisket, he's a little long in the back, strong quarters with a good bend of stifle, he too moved out freely but was rather close behind.

Class 3a- Puppy Bitch

1st. **Cooks' BULLPATCHY LOVE SONG** White, heavyweight bitch with a strong feminine head having lovely width, fill, perfect mouth and a lovely expression. Trying hard to oblige but not making the best of herself, she had a good neck and lovely broad chest, although a little bit long in back, strong quarters and a good bend of stifle. Best Puppy

2ND. **Brasshead Kennels BRASSHEAD GALLIPOLI ROSE** Brindle & White with a strong, deep head but I'd prefer a stronger profile, one instanding stifle. Good front with a strong chest and deep brisket, not quite the shoulder and little long cast.

Class 4a Junior Bitch

1st. **Cook's BULLPATCHY RHYTHM N BLUES**

Very attractive Black br/w, impressive heavy weight with a lovely head in profile, a little more strength in the muzzle would complete the picture, mouth is correct although one canine is a tad tight. Super bone and substance with a good neck and shoulder, straight front, deep brisket, again a slightly sloping topline into well angulated quarters, she moved well both ways. In the challenge she was a little a=over-awed and didn't make the best of herself.

2ND. **Garraway's CLOWNDOG SHIELD MAIDEN**

Pretty white, a close call between her and 3rd. This girl took second on her head which has greater width, breadth and a tad more fill. Mouth is correct and ears are bang on top. Shoulder could be better but she was up on her toes and making the best of herself which disguised this well,, nd 3 – two white,s imilar is some ways but diff in others oo it on more breadth, width and a tad more fill, and more on her toes good ears bang up on top . mot so good in the shoulder as 3, but when she gets on her toes she disguises that , stong stifle a little elong in back

3RD Yeoh's **YANDOMIR GANGSTER GIRL**

Another attractive white she was well balanced with a good shoulder and topline

4TH **Pattersons POTENS NEEDLE**

Class 5a – Intermediate Bitch

1st **Yeoh's YANDOMIR KAUZIN HARMONY**

Really pretty, feminine bitch with a lovely head in profile, correct expression, good eye, ears set just a little to the side. A nice middle of the road type with correct bone for size, with a decent neck and shoulder and a good front, deep brisket. Took some time to settle on the move but was ok when settled. Best Int, R/Up Bitch and R/up in Show

Class 10a – Australian Bred Bitch

1st. **Brasshead Kennels BRASSHEAD PARTY GIRL.**

What a beauty, lovely mature, classical white who is beautifully balanced and oozing type. Head is strong yet feminine with a lovely sweeping profile, well filled with a good eye and super expression, her mouth is a reverse scissor and one canine is just a bit on the tight side but her overall qualities easily outweighed this fault for me. Elegant neck into a good shoulder, deep brisket and correct topline with a deep brisket decent quarters with well angulated quarters which she used well on the move behind.

Took the class, Best bitch and BIS on her overall type and great quality, .

2nd. **Cook's BULLPATCHY BELLADONNA.** 10 months and a little reluctant to show herself off. Heavyweight white with a strong feminine head, good expression and ears bang on top. Decent neck, shoulder, front needs to tighten, but she has time on her side, topline was good with strong quarters and a good bend of stifle, a little more muscle tone would complete the picture. I struggled at first to assess her movement but she did settle enough for me to see that she was sound behind.

3RD. **Sharp's KAHA NOTHING ELSE MATTERS.**

Br/w 15 months but still immature and needing to spring her ribs, she also wasn't making the best of herself but she looked smart and typey when she pulled it together. A feminine head with great length, decent fill with a good expression, she moved a little close behind.

Class 11a – Open Bitch

1st **Humphrey's Bullroy Pearl Warrior;**

Typey girl who'd dropped her undercarriage which made her a little untidy. She has a good head in profile with a lovely eye but would prefer a better ear set and a little more fill, mouth is correct. She took the class on her overall make and shape, having a really good shoulder and a straight front, she is short coupled with a correct topline and strong quarters. She moved well both ways.

2nd **Krawczyk's CH STARDOM MERLOT TIPPED DIAMON.** Pleasing feminine head with a decent expression, this girl was a little overweight and a little less well balanced but she had super quarters, really well muscled with a good second thigh and correct bend of stifle – she moved really well behind, Mature with a good front and a deep brisket

3. **Sharp's Au ch Kaha Big Bucks**

Similar type to 2 with a decent head and correct expression but not so strong on the move

Champ Show Results PM

General Specials

Judged by Mrs V Fox (United Kingdom)

	Exhibit	Exhibit No
Best In Show	BRASSHEAD PARY GIRL (AI)	18
R/Up In Show	YANDOMIR KAUZIN HARMONY	16
Baby Puppy In Show	BRAXSTAR MOONSHINE GANGSTA (AI)	1
Puppy In Show	BULLPATCHY SIR HEINRICH	2
Junior In Show	BULLPATCHY RHETT BUTLER (AI)	3
Intermediate In Show	YANDOMIR KAUZIN HARMONY	16
Australian Bred In Show	BRASSHEAD PARTY GIRL (AI)	18
Open In Show	CH KAHAHIGH ROLLER (AI)	9



Best In Show / Challenge Bitch / Best Aus Bred



RU Best In Show / RU Ch Bitch / Best Intermediate



Reserve Challenge Dog / Best Open



Challenge Dog / Opp Intermediate



Best Baby Puppy





Best Junior



Best Puppy





For a 15% Discount in the Paw Pantry Store enter code BTCVIC2024

OR Sign up for a breeder account and receive 30% discount!

SUPER PREMIUM PET FOOD

Finely crafted. Wonderfully balanced.
Real ingredients. Real food.



GRAIN FREE

Our grain free range doesn't contain grains & uses wholesome ingredients such as peas, chickpeas, lentils & potatoes as a substitute.

This ensures your pet can still have energy to fuel their lives but from a superior source. A grain free diet is recommended & a great choice for pets with allergies or digestion issues.

Available in 2.5kg | 9kg | 20kg



WHOLE SOME GRAIN

Not all dogs are the same, that is why we created the new Hypro Premium Wholesome Grain range. The same nutritional benefits as our Grain free range with the added benefits of the whole grains.

Our whole grain range is a great source of energy containing carbs, fibre & energy from brown rice & oats.

Available in 2.5kg | 20kg

WHOLE SOME GRAINS
NATURAL SOURCE OF

Fibre



JOIN OUR PROFESSIONAL BREEDERS CLUB

- ✔ Discounts on Hypro Premium & other selected products
- ✔ Exclusive offers and promotions
- ✔ Free delivery on orders over \$55
- ✔ Puppy packs for litters
- ✔ Membership requirements apply



Visit Paw Pantry now, your one stop shop for all things Hypro Premium
www.pawpantry.com.au

"Graduating from The University of Queensland's Veterinary School in 2009, Claire has been a practicing small animal veterinarian for 10 years in Australia, South Africa & the UK."

Dr Claire Stevens
Hypro Premium Ambassador



www.hypropremium.com.au

t 1300 070 113 e info@hypropetfoods.com.au

@hypropremium

Verity Fox critiques

I'd like to say a huge thank you to the BTCV committee for their kind invitation to judge their Championship show, it was so exciting to come to Australia to judge for the first time. Thank you to my stewards and of course everyone who entered under me.

Class: 1 – **Baby Puppy Dog**

1st Hansen's BRAXSTAR MOONSHINE GANGSTA (AI)

Really beautiful white puppy dog - only 3 months old with an excellent expression, a strong and deep head with arc, width, an abundance of fill and finish. Balanced with fabulous round bone, if I were to be picky I'd would prefer a slightly lower tail carriage. *(unable to assess his mouth due to his age)*

Class: 3 – **Puppy Dog**

1st – Cook's BULLYPATCHY SIR HEINRICH

A lovely white masculine young dog, with a wonderful expression, strong head with width and fill. He has a good shoulder and deep brisket, bone and substance. Moving well in both directions although he did lose his topline slightly on the move.

Class: 4 – **Junior Dog**

1ST Cook's BULLYPATCHY RHETT BUTLER (AI)

White dog with great expression, a correct mouth, width and fill but I would like a little more arc, he has well placed ears and a correct mouth. He has an abundance of bone and substance with a lovely shoulder, deep chest and brisket with a rather sloping topline. He moved away well in the ring.

Class: 5 – **Intermedia Dog**

1st – Hansen's BRAXSTAR BORN TO BE BAD

Lovely masculine white dog, lovely profile with excellent width and fill a really keen expression with ears bang on top and a correct mouth. Well made with a good shoulder, straight front, excellent bone and substance very masculine dog – moves well away with a correct tail carriage holding his topline when he got going and looked really striking when he was showing himself off. **Best dog**

Class: 10 – **Australian Bred Dog**

1st Yeoh's YANDOMIR BIG GUNS (AI)

White with a brindle ear, he's a big lad moving well in both directions. He has a lovely dark, triangular eye with a correct mouth, I would like a little more fill but excellent finish very handsome lad. Quarters are strong and he moved well both ways

Class: 11 – **Open Dog**

1st Sharp's KAHA HIGH ROLLER (AI)

Very typey boy, with a great head with width, fill, correct ear placement, correct mouth, lovely profile with a keen expression. He had lovely bone and substance with a good shoulder and front into a deep forechest and brisket, would prefer a little more bend of stifle, he moved out well but was a little close behind. Just wasn't quite showing himself off in the challenge. **Reserve Best dog**

2nd Brasshead Kennels' CH. BRASSHEAD BUTCH CASSIDY (AI)

Red and white, very masculine with a correct mouth just not quite the head of first. Great bone and substance with a decent neck and shoulder and a good deep brisket, he's longer in back but has strong quarters and a good bend of stifle, moving well in front but slightly close behind.

Class: 3A – **Puppy Bitch**

1st Brasshead Kennels' BRASSHEAD GALLIPOLI ROSE (AI)

Br/w – well made girl with a good topline, excellent bend of stifle and moving well in both directions. Really showy girl with her ears bang on top with a deep head, with arc, width and fill and lovely expression one tight K9. Shown in lovely condition with a lovely straight front and deep chest

2nd Cook's BULLYPATCHY LOVE SONG

Lovely heavyweight white bitch, very typey with a strong feminine head, correct bite, excellent ear placement and expression. Good bone and excellent straight front with a correct mouth. Not making the best of herself today

Class: 4a – **Junior Bitch**

1st – Garraway's CLOWNDOG SHIELDMAIDEN (AI)

Very typey feminine bitch, a dark eye and keen expression, correct mouth and well placed ears – using them well and really making the most of herself in the ring, feminine head with width, fill and finish. A little upright in shoulder but she had a deep chest, good bone, substance and bend of stifle.

2nd – Cook's BULLYPATCHY RHYTHM N BLUES (AI)

Bl/br/w – Really typey well made bitch, with a great head having arc width and packed with fill - it was a close call between 1st and 2nd but she really wasn't making the best of herself today

3rd – Yeoh's YANDOMIR GANGSTER GIRL (AI)

Lovely white feminine bitch, with a correct mouth and keen expression

4TH – Patterson's POTEN NEEDLE

Class: 5A – **Intermediate Bitch**

1st Yeoh's YANDOMIR KAUZIN HARMONY

Beautiful white bitch full of type, lovely head in profile, good dark eye and expression, I would prefer her ears a little more on top, elegant neck into a lovely shoulder, deep chest and brisket and correct topline. Moved well behind when settled, **Reserve best bitch**

2nd Sharp's KAHA NOTHING ELSE MATTERS

Br/w lovely sweeping profile and lovely neck into deep chest, would like a slightly better placed shoulder she wasn't showing herself off today. Presented in great condition.

Class: 10A – **Australian Bred Bitch**

1st – Brasshead Kennels' BRASSHEAD PARTY GIRL (AI)

I loved this girl, she oozed quality and class. A beautiful strong head, with a wicked expression and well placed ears, she had width, fill and finish with a sweeping profile - a reverse scissor and tight K9. Long neck into a correct shoulder and straight front with a correct topline. She had good quarters helping her move away with ease. **Best Bitch**

Class: 11A – **Open Bitch**

1st – Krawczyk's CH STARDOM MERLOT TIPPED DIAMON

Very feminine but typey bitch, she had lovely expression with plenty of width, fill and a correct mouth I would like her ears a little more on top. Lovely chest and deep brisket, correct shoulder and straight front. She was slightly plump but has plenty of muscle and a lovely second thigh which helped her move with power and ease behind.

2nd – Humphrey's BULLROY PEARL WARRIOR

Well made white bitch, really showy and having a great time. She has a lovely deep profile but I would like a little more fill. She moved well in both directions with a lovely straight front and excellent topline.



9 & 10 November 2024

Bulla Complex

3 X Championship shows

Postal entries close 25 October 2024

Online entries close 2 November 2024

NO LATE ENTRIES ACCEPTED

JUDGES

Sharon Bover (AUS)

Steve Wheatley (UK)

Alexandra Zepke (Austria)



9 November 2024

Championship Show AM : Sharon Bover—9.00 am (followed by BTMCV Champ show)

Championship Show PM: Stephen Wheatley - at the conclusion of the BTMCV Champ Show, not before 1.00 pm

10 November 2024

Championship Show : Alexandra Zepke (Austria)— at the conclusion of the BTMCV Open Show, not before 10.30 am

ROM Points available all 3 shows, the club will be running shows in conjunction with the BTMCV

Entries ONLINE at www.showmanager.com

Paper entries posted with payment to: Show Manager PO Box 78, Waterford QLD 4133

Enquiries: bullterrierclubvictoria@gmail.com



Entry fees	Members Entry for each Show per class	Non-Members entry for each show per class
	Champ Entries = \$30.00 Baby Puppy = \$20.00	Champ Entries = \$35.00 Baby Puppy = \$ 25.00
	All three shows per adult dog: \$80.00	All three shows per adult dog \$95.00

Champ Shows classes to be judged in order : Dogs 1, 2, 3, 4, 5, 10, 11
Bitches 1A, 2A, 3A, 4A, 5A, 10A, 11A

Trophies and Sashes for all "In show" awards.

Catalogue: Complimentary digital copy available morning of show via online provider or \$15 printed for all shows. Printed catalogue must be pre-ordered. **Exhibit Numbers** emailed prior to show.

Catering: Light Catering Supplied (V & GF) breakfast and lunch, compliments of the club.

This Event will be held in accordance with VCA Regulations, Codes, Policies & Procedures (Effective 14 February 2013) Please note Rule - 7.5.25 No handler or exhibit shall enter the judging ring wearing or bearing any item which identifies by name, prefix, position or distinctive style an exhibit, exhibitor, breeder, sponsor or award; exhibit numbers excepted.

Extreme Weather: Dogs Victoria extreme weather Regulations will apply (Regulation 7.6.8)





Championship and Open Show 9th & 10th November, 2024

Bulla Dog Complex

Entries Close 3/11/24.

Saturday Championship Show (at conclusion of BTCV AM Show, not before 11.00am)

Mr Stephen Wheatley (UK)

Sunday Open Show Ms Joy Schafer (to commence at 9.00AM sharp)

Sunday Championship Show: (at conclusion of BTCV Show & Lunch not before 1.00pm)

Ms Alexandra Zepke (Austria)

Please note the club will be running shows in conjunction with the BTCV

All enquiries to the Secretary on 0432 764 470 - no calls after 9pm. Online Entries via Show Manager PO Box 78 Waterford QLD 4133. No Late entries will be accepted.

Members Entry per dog:	Non-Members entry per dog:
Champ Show \$20.00	Champ Show \$25.00
\$15.00 Baby Puppy	\$15.00 Baby Puppy

Championship Classes: Dogs 1, 2, 3, 4, 5, 10, 11 - Bitches 1A, 2A, 3A, 4A, 5A, 10A, 11A

Open Classes: Dogs 1, 3, 4, 5, 11 - Bitches 1A, 3A, 4A, 5A, 11A

Catalogue: \$15.00 (for both shows)

Catering – The Club will have available light refreshments available, during the open show and lunch break (soup/rolls and finger food). The Committee invites members and exhibitors to join in.

This sanctioned event is subject to any Covid-19 restrictions current at the time and approval of a DV Event Covid Compliance Form. Dogs Victoria Extreme Weather Regulations will apply (Reg 7.6.8).



Show Manager

Online Entries Available
www.showmanager.com.au

Sash & Prize for all "In Show" awards.

Scientific Terrier Breeding

by A C Cowley

SCIENTIFIC terrier breeding is a means of producing Champions and winners of a type, and to keep producing them.

I have been lucky enough to breed 18 Champions which have gained their titles in England, besides a large number of overseas Champions. In addition, I have bred six Champions in a direct line. This may be called scientific terrier breeding; to me it has only seemed commonsense dog breeding.

To breed Champions and continue breeding them one must have a strain and stick to type by inbreeding. More often than not the average dog breeder is scared stiff of close inbreeding. Yet it is quite safe, and contrary to widespread belief we can inbreed and inbreed and still keep stamina, size and intelligence, as long as only robust stock is used.

All the best known strains of any kind of exhibition livestock are inbred, in fact we must inbreed to produce a type and stick to that type.

Waste of time

I have often sold good bitches that were inbred, and on seeing the buyer perhaps after a year I have discovered that instead of sending the bitch to a dog of the same bloodlines he has used a dog of quite another strain — or one of no strain at all — remarking that he thought a little outcross to new blood would be beneficial. The result? Well, the result was an absolute waste of time! To mate bitches to dogs of different blood is, in 99 cases out of 100, to breed nothing but rubbish.

It is because the general run of breeders do these stupid things (often after seeking advice which they do not take), that it is left to the very few in each breed to attain success and keep the high position they hold.

Many people can tell at a glance at a dog in the ring who bred it, or of whose type it is. The ones who keep producing Champions do so because they inbreed to get that type. Those who rush to breed from every new Champion are legion — about 95% of the fancy — yet the strength of the kennel is in the bitches.

It is the bitches which produce the goods, and with a really good bitch one can even afford to use a second-rate dog of the same bloodlines (though I would never advise using a second-rate dog when you could get the services of one that is first-rate). Yet the same bitch sent to a Champion dog of different bloodlines is more likely than not never to produce anything even as good as herself; hence the constant disappointments.

Prepotent sires

Has the average breeder ever realised that the latest Champion often mates hundreds of bitches, including many really good ones. Even a second- or third-rater would produce something good if he sired the number of puppies which the average Champion does.

There are in all breeds certain dogs which have the propensity of getting a certain type, often after their own likeness and out of all sorts of bitches. But they are few and far between.

Writing of sires, one must bear in mind that not one in a thousand times is a small dog a good sire of winners; one must have a masculine dog, a dog that looks a sire. In the same way the bitches that produce the winners are doggy bitches, at least in my experience.

One hears a lot about quality being wanted: "You must have quality" is the cry. One can have so much quality in a bitch that there is very little left except quality. A little quality is all right in a show bitch, but I never remember yet any super-quality bitch that ever produced much except weeds.

One cannot expect to get something out of nothing. Therefore one wants a doggy bitch every time. Some will not agree, but that is my opinion, and of all the good dogs and bitches I have bred, one and all came from good doggy bitches.

To the novice I would say: pay all you can afford and get the best bitch you can afford; one doggy bitch is worth half-a-dozen so-called brood bitches. How many of these brood bitches that are nothing else except brood bitches produce winners? Not one in a thousand!

Having got your doggy bitch, study her breeding well and mate her to a dog of the same bloodlines — and a masculine dog at that. But in inbreeding and close breeding you must remember that you will also reproduce faults as well as virtues. Therefore, be very careful not to breed a bitch with similar faults to the stud dog.

I have inbred and inbred until the great great grandsire is the same dog 12 times, and yet have robust stock without nerves.

If you wish to get out of one strain and into another, then select a stud dog that is much inbred and excelling in the points you want to get. Mate the best bitches from the mating back again to their sire's brother, son, grandson, or any other dog of similar breeding that is inbred the same way as your bitch's sire. Mate the produce of this mating — that is, only the best bitches — again to a dog of similar breeding to the first sire you used. By this time you should be getting what you want, and having got it, go back to their sire's strain, and don't go out of it.

As judges are born and not made, so too are clever breeders. In breeding, as in judging, one must have flair. If someone has not, I'd never expect him to turn out one winner after another. Brains and a knowledge of what one wants, and how to get it, and an ability to tell a dog in the rough, are really what count in dog breeding. Breeders who have this can usually produce good specimens. But I do think that people who want to get to the top and keep there with homebred specimens in any class of exhibition stock have a flair or uncanny gift, call it what you like.

Pedigree counts

Many clever breeders are not good judges, but in the same way many born judges do not excel in breeding the best winners.

Pedigree is everything some say. It is certainly a lot, probably 80% in a good specimen. But how can one expect to breed anything really good from weeds, how ever good the pedigree may be? One may do so very occasionally, but what one usually breeds from weedy specimens is nothing but regrets at wasting time.

In breeding I do not like mating brother to sister or son to mother. Half-brother and sister, yes; also uncle to niece, and granddaughter to grandsire.

I find some people are quite satisfied with what they produce, and when they don't win with their stock it is always on account of unfair judging. This class of breeder will never get to the top. Never be satisfied with what you breed. Always aim to produce something better.

Keep up with the times, and if possible keep ahead of them. There are far too many breeders who look back and quote good dogs of years ago. Forget the past. Believe me, in 35 years of dog breeding, terriers have improved beyond recognition and keep on improving. As one gets older one is apt to think dogs of years ago were better than they really were. That is quite wrong.

Judging is sometimes not all it might be, but generally speaking the best win. If you don't win, well you do not have the dogs with which to win. In that case, never rest until you do have such dogs. To see a really good dog should be an incentive to breed as good or better.

I will close this short article by again saying that in the successful breeding of terriers one must stick to one strain and inbreed. Mixing strains too often produces nothing but nightmares.

Reprinted in part from the Queensland Airedale. Written for 'Airedale Talk' in 1952, Mr Cowley's article is as much to the point in 1986.

This article follows the same subject as the lecture given at the last General Meeting. So many people ring and say they have used the dog in the next street or their friends dog, to mate to their bitch. We also have a lot of calls saying, I want to buy a bitch to mate to my dog. We spend a lot of time trying to explain to these people that they must line breed and what that really means. Pedigree are most important.

The article is reprinted from.
DOWN UNDER March 1986.

NATIONAL BULL TERRIER COUNCIL (AUSTRALIA)

There is a move to form a National Bull Terrier Council of Bull Terrier Clubs.

A copy of correspondence to the Bull Terrier Club (N.S.W.) and their reply acknowledging the need for just such a Council and agreeing to their Club becoming a member has been circulated to all Committee Members.

Included with the correspondence was a copy of a draft Constitution put forward by the Australian National Kennel Control.

Those of you who were in the Club when it began will remember that the K.C.C. presented us with a draft Constitution also which could be altered but not to any great extent.

The purpose of the establishment of the N.B.T.C. (A) is a move towards better liaison between Clubs and if any members are interested in any aspect of the setting up of this organisation they are asked to get in touch with their closest Committee Member.

It is to be discussed in Committee and their findings will be made available to interested parties.

The main objects of the N.B.T.C. (A) are:

1. To affiliate with the A.N.K.C.
2. Allocation of the term National Specialty Show
3. Encourage and promote improvement of the standard, breeding and exhibition of Bull Terriers.
4. To enable more concerted action to be taken on certain issues as they arise.
5. Association with overseas Bull Terrier organisations.
6. Assist Member Clubs to hold shows, parades etc.
7. To legislate, make by-laws and do other acts necessary in promoting all or any of the objects of the N.B.T.C. (A).

The powers of the N.B.T.C. (A) are to be able to levy fees, invest monies, hold seminars, act as liaison with overseas B.T. organisations and have the right to allocate the term National to any Territory or State.

But it will have no say with regard to individual members rights or the rights of Clubs as autonomous bodies.

The President and the Secretary of the N.B.T.C. (A) shall not be delegates or be able to vote.

It is suggested at this time that the term of Office of the President and Secretary be two years, both of these positions are to be rotated amongst the Clubs.

I cannot speak for the Committee however I do think that the idea has merit and if the future delegates embrace the concept, bearing in mind the importance of the task it could be a milestone for the breed in Australia.

BULL TERRIER R.O.M. AWARD

By The Bull Terrier Club

Published by the Hereditary Diseases Committee for the information of members.

Recently I had reason to explore a most innovative National Point Score System that is both unique and incredibly simple.

The reason I was attracted to this system is that close consideration is being given to an Hereditary Diseases Scheme as a qualifier for recipients of the award.

The System is the Recognition of Merit Award (R.O.M.) The name would be familiar many breeders who have knowledge of such awards in the United States. This award however was fostered by the Bull Terrier Breeders in Australia in 1984 and has recipients over the 25 years of only 85, back-dated to 1970.

The foundation and objectives of the award is to reward those dogs which have won when judged by Breed Specialists at the highest level of competition.

The objective is to recognise those special dogs who given the opportunity are most likely to contribute towards better Bull Terriers in all categories - temperament, breed type and soundness.

The R.O.M. System has been set up to be self initiated, in other words 99 percent of Shows judged by Bull Terrier Specialist judges held under the rules of the A.N.K.C. automatically qualify to award points. Because Bull Terrier people say that this or that show will be an R.O.M. Show does not mean that this show is judged in any special way. The R.O.M. System of points is allocated at any show judged by a breed specialist in Australia.

A list of A.N.K.C. qualified judges is available and distributed as requested by Clubs. The criteria for a judge to be on the List is very basic: to have been approved by the A.N.K.C. to judge Bull Terriers at Championship Show level, to have owned or bred Bull Terriers in the past ten years and to have had a demonstrable involvement in the breed over the past 10 years. The present list consists of 20 judges equally distributed around Australia and in every State.

For an overseas qualified judge approved by the A.N.K.C. who has judged and awarded R.O.M. points in Australia since 1970 they

are automatically able to award points. For a new invited Overseas judge to award R.O.M. points they must be approved by the A.N.K.C. to judge in Australia and provide a Resume to prove that in their country their status equals a Bull Terrier Specialist in this country.

Where the judge and show meets the criteria, the R.O.M. points are automatically given and a points certificate given to the owner on proof of their win.

R.O.M. points consist of 2 for Challenge and 1 for Reserve Challenge at any All Breeds Championship Show and 3 for Challenge and 2 for Reserve Challenge at an affiliated Bull Terrier Club Show. A dog must accumulate 7 points to earn the R.O.M. Certificate, but of those 7 points the dog or bitch must earn one three point award. (Challenge at a Bull Terrier Club Show). In other words a dog may accumulate 15 R.O.M. points without actually receiving a R.O.M. Certificate until he or she wins Best Dog or Bitch or a Challenge at a Bull Terrier Club Show. There is no discrimination about this award, all registered Bull Terriers are able to compete for the R.O.M. regardless as to whether the owners are members of a Bull Terrier Club or not.

To further enhance the award, recently it was decided to use a number after the award names to indicate the number of Bull Terrier Club Shows a dog has won ie: R.O.M. 2 etc.

The benefits of such a system are numerous. Any person who is given a pedigree where R.O.M. awards have been noted against each recipient will automatically know the strength of the Pedigree. The more R.O.M. dogs on the pedigree the more likely that the animal is strong for virtues. This must be a tremendous aid for newcomers to the breed when selection of a puppy or sire for a bitch is being considered.

The R.O.M. Committee has now compiled a computer database which also lists generations of R.O.M. winners to provide breeders with the knowledge of which dogs and bitches are strong for passing virtues to their offspring. This list is published regularly.

A condition of receiving the award is to supply a photograph and four generation

pedigree. This information is gradually being converted to computer files with the intention that a scanned image of the recipient to be set in the corner of the pedigree page as a Historical database.

To date dogs and bitches have received equal quantities of awards and if it is thought that a minor State such as S.A. or W.A. is disadvantaged because of less specialist shows it should be noted that the highest number of awards given to one Kennel Prefix resides in WA.

In a breed where the puppy registrations have plummeted dramatically since its rise in the 1980s the level of competition has increased significantly, with up to five or six dogs and bitches receiving awards every year whereas in the 70s and 80s just a few top winners dominated.

As a National Points Score the System is near to perfect. Add the possibility of qualifying the recipients based on a health check of Hereditary Diseases and you have the ideal base for a positive breeding pool.

It's not often we can see the awarding of ribbons and sashes contributing to all facets of dog ownership. For my money you have to take your hat off to The Bull Terrier Breeders for their initiative in devising a breed saving award with yet more to come in protection from harmful hereditary diseases.

The Bull Terrier people have always had a declaration of not offering for sale or not breeding from deaf dogs in all club constitutions. Now in NSW the Bull Terrier Club Inc has started a hereditary diseases scheme for Kidney failure, Heart Conditions and Luxating Patella.

It seems this breed is in safe hands.



PET MEMORIAL PLAQUES

In memory of our beloved pets

Exterior gold laminated plaques 10 cm x 7 cm
4-5 lines of personal engraving \$10.00
Kennel, House & Personal Plaques to suit
8 Cowl St, Greenacre 2190, PH/FAX 02 9642 6777



Application for Membership / Renewal

Name		Address, including City, State and Postcode	
Contact Number		Dogs Vic Membership No. Or Dog State Membership No.	
Email		Prefix	

Membership Categories and Applicable fees

Membership Category	Fees / Annual Fees	✓ Selection	TOTAL PAYABLE
<i>For new Applications only – approved after 1 April will carry onto the following financial year, ending 30 June.</i>			
Dual Membership (Same address)	\$30.00	<input type="checkbox"/>	EFT Bendigo Bank BSB: 633 000 Acc # 125398453
Single Membership	\$20.00	<input type="checkbox"/>	
Junior (Under 16 years)	\$5.00	<input type="checkbox"/>	
Registered Breeder Members - Website Listing per year	ADD \$25.00	<input type="checkbox"/>	
Dogs Vic Levy – Applies to Non DV Members who reside in Victoria – (paid annually)	ADD \$9.30 per person	<input type="checkbox"/>	\$

- ✦ Applicants will be elected by vote of the committee at the first possible Committee Meeting held after receipt of application.
- ✦ Annual renewals are due by 30 June each year, Memberships not renewed by 31 July are subject to re-admission via committee.

I/We the undersigned wish to forward my/our name/s as prospective members of *The Bull Terrier Club Of Victoria Inc.* and hereby agree to abide by the rules, bi-laws, constitution, statement of purpose and code of conduct of the BTCV and Dogs Victoria.

Signature		Name	
	Signature of the person/s submitting this form		Name of the person/s submitting this form (print)
Date	<input style="width: 40px; height: 20px;" type="text"/> DD	<input style="width: 40px; height: 20px;" type="text"/> MM	<input style="width: 40px; height: 20px;" type="text"/> YY

Send applications to
 The Secretary, PO Box 1635 Melton West 3337 or
bulfterrierclubvictoria@gmail.com

Breeder - Website Listing Information: *(Prefix/Stud/Puppy Listing)*

Application received	Membership Approved/Rejected	Amount Paid	Receipt Number	Secretary Signature
/ /	/ /	\$		