

The Bull Terrier Club of Victoria Inc.

(Incorporated A0026517R)



October 2018
Bully News



COMMITTEE

President: Sherri Johnston

Vice President: Les Greenall

Vice President:

Treasurer: Jen Woodsell

Secretary: Deborah Patterson

Show Secretary: David Hirst

Catering: Matthew Poplar

Promo/Merchandise: Jacqui Smith

Sponsorship: Tony DiFresco

Committee: Neil McCracken

Committee: Kaye McCracken

All Correspondence and Enquiries:

Post

Bull Terrier Club of Victoria Inc.

Attention: The Secretary

PO Box 1635

Melton West Vic 3337

Email

bullterrierclubvictoria@gmail.com

Web

www.bullterrierclubvic.com

Life Members

Vin and Shirley Healand

Alison Sutcliffe

Les Greenall

Cathy Sluga

Wilma Rawlings

Daryl Munn

Norm Jessup

Neil McCracken

Disclaimer:

Every care has been taken in the compilation of this magazine, but the Editor and the club assumes no responsibility for errors or omissions or any effects arising there from. Opinions expressed in these pages, whether in articles or advertisements are not necessarily the opinions held by The Bull Terrier Club of Victoria Inc.

From the Secretary

Hello Members,

We have a few shows coming up in November and the BTCV committee is busily preparing for the Victorian one. I would like to send out a huge thanks to our members and supporters for such amazing support we nearly have a full list of pledged donations for our trophies and sashes!

I have included some vintage articles in this newsletter and some interesting statistics from the US on the numbers of pedigree dogs being bred there. It is interesting that they seem far more interested in discussing the issue of declining numbers than I see our own ANKC and state bodies. In Victoria there are more rules and regulations coming into effect that I can see will only make the problem worse.

Whilst the dog showing and breeding world is in decline here, I had a heartening email conversation from a Bull Terrier Breeder in the Philippines recently. An Aussie ex-pat, he was requesting information about the DNA kits we have for the Animal Health Trust and also information regarding parentage testing. I asked about the status of the breed in the Philippines and he advised that whilst there is a large contingency of puppy farmers, there are some credible Bull Terrier Breeders and quite a lot of minis. He and a number of other breeders are working discreetly to weed out the puppy farmers and he has advised that with the help of a number of genuine enthusiasts there is a lot of movement in a positive direction.

Finding quality animals in the Philippines is still an issue for him and most stock has to be imported. He also reported that in the near future he wants to try and start a Bull Terrier Club, possibly a combined club with minis and staffies aligned to the PCCI and FCI. Starting a club requires finances and members, but it will be a positive step towards having a Bull Terrier Specialty Show in the Philippines sometime in the near future.

Our club recently participated in the Melbourne Show. Thanks to Sharon Luison who manned our stand along with Neil and Kaye McCracken. From the photos I saw, the stand looked fantastic. It is a shame I heard that nearly all of the bull terriers were not awarded due to mouth faults. I find this disappointing to discard an animal that might have many virtues because it has a tooth out of place, or award a mediocre animal because it has a correct mouth. Having a mouth fault is not a disqualifiable offense according to our breed standard. Apparently the judge went as far as counting molars! I would encourage exhibitors who experienced this to write a letter of complaint to the RASV when they ask for feedback. It is no wonder you hardly see a bull terrier at the Melbourne Show anymore.

WAT-ER PAIN!!!

Until recently, one of my bullies had me in a battle of wits, over a water bowl of all things.

She would entertain herself by paddling in her stockpot, then tipping it over and barking at her reflection in the bottom for a good hour or so. Not good when it's 9am on a summer's day and everyone has gone to work!



I tried a metal bucket and tied it to the run fence, but she killed it (exhibit A).

I tried tying her stockpot to the run fence with steel cable. She would always manage to tip it over.

Finally I stumbled across these sensational concrete bowls at Pet Stock in Bacchus Marsh for around \$35 for a large size, it holds around 10 litres and is too heavy to tip over. Now the best she can do is paddle in it but she cannot get all the water out and we have had no issues since.

Cheers Deb



Bull Terrier Club of Victoria Inc

Affiliated with the Victorian Canine Association Inc.
& The National Bull Terrier Council (Australia).
A0026517R



PO Box 1635, Melton West Vic 3337

<http://www.bullterrierclubvic.com>

email: bullterrierclubvictoria@gmail.com

agenda

Meeting	Venue	Time	Date
Annual General Meeting	KCC PARK – Classic Room	1:00pm or at conclusion of Specialty show, whichever is later.	25 th November 2018

Chair **Meeting Opened**

Attendees –

Apologies –

Item	Discussion
1	Review of previous minutes:- The minutes of the previous AGM held on 7th January 2018 Moved: Seconded:
2	Treasurers Report & Audit Report Statement of revenue and expenditure for 2017-2018 financial year Unpresented Cheques Term deposit Appointment of auditor Moved: Seconded:
3	Committee Reports
4	Voting on Committee Positions President, Treasurer, 1 x Vice President, 3 x committee
5	National Council Business
6	Judges nominations and voting:
Chair	Meeting Closed



Bull Terrier Club of Victoria Inc

Affiliated with the Victorian Canine Association Inc.
& The National Bull Terrier Council (Australia).



PO Box 1635, Melton West Vic 3337

<http://www.bullterrierclubvic.com>

email: bullterrierclubvictoria@gmail.com

NOMINATION FORM FOR VACANT COMMITTEE OF MANAGEMENT POSITIONS FOR AGM 2018

Positions available for nomination (all two year positions)

1 PRESIDENT (EXPIRES 2020)

1 TREASURER (EXPIRES 2020)

1 VICE PRESIDENT (EXPIRES 2020)

1 COMMITTEE (EXPIRES 2020)

1 COMMITTEE (EXPIRES 2020)

1 COMMITTEE (EXPIRES 2020)

Nomination form:

I hereby nominate _____

For the position of _____

Signed (Nominator) _____

Accepted (Nominee) _____

Nomination forms must be received in writing, by the Secretary 21 days prior to scheduled AGM meeting date.

USA AKC Registration Information -
Mid 2018 update

Bull Terriers

	Metric	2008	2009	2010	2011	2012	2013	2014	2015	2016	2017	2018	Notes
Litter's & Litter Related Stats	Registered Litters	734	704	667	651	636	635	635	599	573	572	300	# AKC litters registered each year
	Complement (# Pups in Litters)	3,490	3,393	3,228	3,077	3,232	3,190	3,126	2,973	2,822	2,837	1,434	Litters - AKC
	Litter Complement	3,506	3,419	3,228	3,084	3,232	3,206	3,126	2,973	2,822	2,837	1,434	# Pups in each year's litters (known as the "Complement")
	Average Complement	4.78	4.86	4.84	4.74	5.08	5.05	4.92	4.96	4.92	4.96	4.78	Average # of pups per litter
	Individually Registered Pups (to date)	1,678	1,658	1,508	1,515	1,502	1,473	1,408	1,294	1,221	1,096	309	# Pups from each year's litters individually registered (to date)
	Actual Return Rate (to date)	47.9%	48.3%	46.7%	49.1%	46.5%	45.9%	45.0%	43.5%	43.3%	38.6%	21.5%	% Pups from each year's litters individually registered (to date)
	Limited Registrations (to date)	53	89	77	66	64	68	101	119	126	120	60	# Limited Registrations from each year's litters (to date)
	% Complement Registered Limited (to date)	1.5%	2.6%	2.4%	2.1%	2.6%	2.7%	3.2%	4.0%	4.5%	4.2%	4.2%	% Pups from each year's litters Registered as Limited (to date)
	Limited Revoked (to date)	4	5	5	3	9	5	3	3	2	2	1	# Limited Revoked Dogs from each year's litters (to date)
	Litters from Revoked Limited (to date)	4	5	5	3	9	5	3	5	2	2	1	Litters involving each year's Revoked Limited (to date)
Dog's & Dog Related Stats	Complement Bitches in Conformation	121	120	93	108	106	87	70	93	64	64	7	# Bitches from each year's litters in Conformation (to date)
	Complement Dogs in Conformation	86	84	79	88	74	76	82	70	68	46	4	# Males from each year's litters in Conformation (to date)
	Total Complement in Conformation (to date)	207	204	172	196	180	163	152	163	132	110	11	Total from each year's litters in Conformation (to date)
	% Complement in Conformation (to date)	5.9%	6.0%	5.3%	6.4%	5.6%	5.1%	4.9%	5.5%	4.7%	3.9%	0.8%	% of each year's litters in Conformation (to date)
	Complement Bitches Bred	347	343	292	291	292	294	215	186	118	41	4	Bitches from each year's litters that have been bred (to date)
	Complement Dogs Bred	196	178	186	194	181	176	150	127	92	33	4	Males from each year's litters that have been bred (to date)
	Total Complement Bred (to date)	543	521	478	485	473	470	365	313	210	74	8	Total from each year's litters that have been bred (to date)
	% Complement Bred (to date)	15.5%	15.2%	14.8%	15.7%	14.6%	14.7%	11.7%	10.5%	7.4%	2.6%	0.6%	% of each year's litters that have been bred (to date)
	AKC Dog Registrations	1,774	1,716	1,556	1,564	1,574	1,481	1,452	1,365	1,362	1,317	699	# Registered from AKC Litters during each year
	FSS Registrations	-	-	-	-	-	-	-	-	-	-	-	# of FSS Dog Registrations each year
Dog's & Dog Related Stats	Conditional Registrations	11	4	-	2	3	-	-	-	-	-	-	# of Conditional Registrations each year
	Open Registrations	2	-	-	-	-	-	-	-	-	-	-	# of Open Registrations each year
	Foreign Registrations	111	67	72	68	60	62	63	77	83	69	36	# of Foreign-born Registrations each year
	Total Dogs Registered	1,898	1,787	1,628	1,634	1,637	1,543	1,515	1,442	1,445	1,386	735	Total Dog Registrations each year
	Unique Bitches in Conformation (each year)	362	354	351	292	317	301	276	251	248	214	154	Unique # of bitches in Conformation each year
	Unique Dogs in Conformation (each year)	280	259	246	226	255	231	217	209	203	183	120	Unique # of males in Conformation each year
	Total Unique in Conformation (each year)	642	613	597	518	572	532	495	460	451	402	274	Unique # in Conformation each year
	Unique Bitches Bred (each year)	665	636	618	592	576	581	577	534	505	507	300	Unique # bitches bred each year
	Unique Dogs Bred (each year)	454	451	431	414	399	405	411	408	368	364	229	Unique # males bred each year
	Total Bred (each year)	1,119	1,087	1,049	1,006	975	986	988	943	873	871	529	Unique # bred each year

% Change YOY	2008	2009	2010	2011	2012	2013	2014	2015	2016	2017	2018	Notes
Litters	N/A	-4.1%	-5.3%	-2.4%	-2.3%	-0.2%	0.0%	-5.7%	-4.3%	-0.2%	-47.6%	These %'s are calculated to show the change each year from the previous year.
Litter Complement	N/A	-2.5%	-5.6%	-4.5%	4.8%	-0.8%	-2.5%	-4.9%	-5.1%	0.5%	-49.5%	
Registered Pups	N/A	-1.2%	-9.0%	0.5%	-0.9%	-1.9%	-4.4%	-8.1%	-5.6%	-10.2%	-71.8%	

% Change Relative 2008	2008	2009	2010	2011	2012	2013	2014	2015	2016	2017	2018	Notes
Litters	0.0%	-4.1%	-9.1%	-11.3%	-13.4%	-13.5%	-13.5%	-18.4%	-21.9%	-22.1%	-59.1%	These %'s are calculated to show the change each year compared to 2008.
Litter Complement	0.0%	-2.5%	-7.9%	-12.0%	-7.8%	-8.6%	-10.5%	-15.2%	-19.5%	-19.1%	-59.1%	
Registered Pups	0.0%	-1.2%	-10.1%	-9.7%	-10.5%	-12.2%	-16.1%	-22.9%	-27.2%	-34.7%	-81.8%	

Litter #s & Litter Related Stats														
	Metric	2008	2009	2010	2011	2012	2013	2014	2015	2016	2017	2018	Notes	
	Registered Litters	22,117	49,188	16,683	14,703	12,419	12,939	11,869	11,723	11,940	12,438	6,586	# AKC litters registered each year	
	Complement (# Pups in Litters)	59,599	83,536	72,308	57,894	57,932	54,021	51,231	51,004	52,274	54,931	23,985	Litters - AKC	
	Litter Complement	97.576	83.051	73.867	64.385	59.148	54.761	51.676	51.411	52.486	54.933	23.043	# Pups in each year's litters (known as the "Complement")	
	Average Complement	4.41	4.43	4.43	4.38	4.41	4.37	4.35	4.39	4.43	4.42	4.41	Average # of pups per litter	
	Individually Registered Pups (to date)	36,042	30,562	26,537	24,904	22,832	22,183	20,921	21,385	21,813	21,139	5,832	# Pups from each year's litters individually registered (to date)	
	Actual Return Rate (to date)	36.9%	33.9%	33.5%	38.7%	38.6%	40.5%	40.5%	41.6%	41.6%	38.5%	30.0%	% Pups from each year's litters individually registered (to date)	
	Limited Registrations (to date)	6,014	5,655	5,218	5,475	5,350	5,364	5,382	5,869	5,869	6,809	2,025	# Limited Registrations from each year's litters (to date)	
	% Complement Registered Limited (to date)	6.2%	6.7%	7.1%	8.3%	9.0%	9.8%	10.4%	11.4%	12.1%	12.4%	7.0%	% Pups from each year's litters Registered as Limited (to date)	
	Limited Revoked (to date)	78	37	54	32	48	56	70	60	44	44	36	5	# Limited Revoked Dogs from each year's litters (to date)
	Litters from Revoked Limited (to date)	77	53	51	49	47	53	61	55	44	44	35	5	Litters involving each year's Revoked Limited (to date)
	Complement Bitches in Conformation	2,429	2,276	2,212	2,180	2,097	2,039	1,936	1,986	1,832	1,663	222	# Bitches from each year's litters in Conformation (to date)	
	Complement Dogs in Conformation	1,897	1,617	1,613	1,633	1,561	1,522	1,406	1,408	1,348	1,184	174	# Males from each year's litters in Conformation (to date)	
	Total Complement in Conformation (to date)	4,326	3,893	3,825	3,793	3,658	3,561	3,342	3,394	3,200	2,847	396	Total from each year's litters in Conformation (to date)	
	% Complement in Conformation (to date)	4.3%	4.6%	5.3%	5.9%	6.2%	6.6%	6.3%	6.6%	6.1%	5.2%	1.4%	% of each year's litters in Conformation (to date)	
	Complement Bitches Bred	5,468	4,897	4,346	4,126	4,196	3,791	3,361	2,974	2,116	664	79	Bitches from each year's litters that have been bred (to date)	
	Complement Dogs Bred	3,103	2,681	2,348	2,064	2,211	1,951	1,633	1,372	1,332	538	55	Males from each year's litters that have been bred (to date)	
	Total Complement Bred (to date)	8,571	7,578	6,694	6,220	6,407	5,742	5,014	4,346	3,448	1,202	134	Total from each year's litters that have been bred (to date)	
	% Complement Bred (to date)	8.8%	8.9%	9.1%	9.7%	10.8%	10.5%	9.7%	8.8%	6.6%	2.2%	0.5%	% of each year's litters that have been bred (to date)	
		AKC Dog Registrations	39,264	34,112	29,044	27,082	24,593	23,184	22,328	22,293	23,067	23,993	13,781	# Registered from AKC Litters during each year
		FSS Registrations	481	532	596	687	1,607	338	163	156	37	30	3	# of FSS Dog Registrations each year
Conditional Registrations		178	116	105	82	59	58	42	42	51	39	18	# of Conditional Registrations each year	
Open Registrations		16	-	-	-	52	79	83	81	361	113	113	# of Open Registrations each year	
Foreign Registrations		617	489	501	538	541	567	562	572	629	583	288	# of Foreign-born Registrations each year	
Total Dogs Registered		40,566	35,229	30,246	28,389	26,552	24,226	23,174	23,130	24,143	24,781	13,213	Total Dog Registrations each year	
Unique Bitches in Conformation (each year)		6,829	6,389	6,190	5,897	5,333	5,644	5,527	5,366	5,366	5,214	3,788	Unique # of bitches in Conformation each year	
Unique Dogs in Conformation (each year)		7,232	6,845	6,711	6,485	6,372	6,472	6,200	6,108	6,026	5,893	2,803	Unique # of males in Conformation each year	
Total Unique in Conformation (each year)		12,061	11,234	10,901	10,532	10,375	10,016	9,747	9,474	9,392	9,107	6,591	Unique # in Conformation each year	
Dogs & Dog Related Stats		Unique Bitches Bred (each year)	18,982	17,083	14,961	13,045	11,832	10,978	10,293	10,113	10,201	10,532	6,570	Unique # bitches bred each year
	Unique Dogs Bred (each year)	12,183	11,082	9,661	8,468	7,485	6,832	6,487	6,280	6,134	6,230	4,227	Unique # males bred each year	
	Total Bred (each year)	31,165	28,165	24,6										

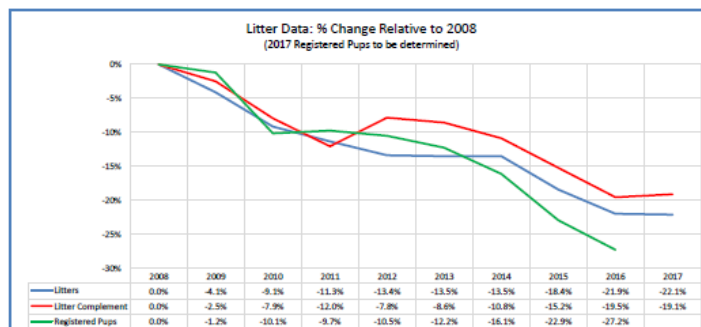
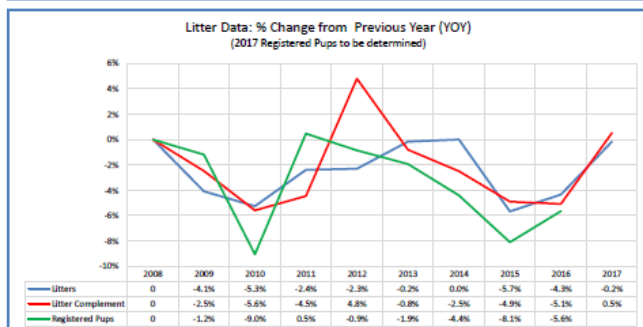
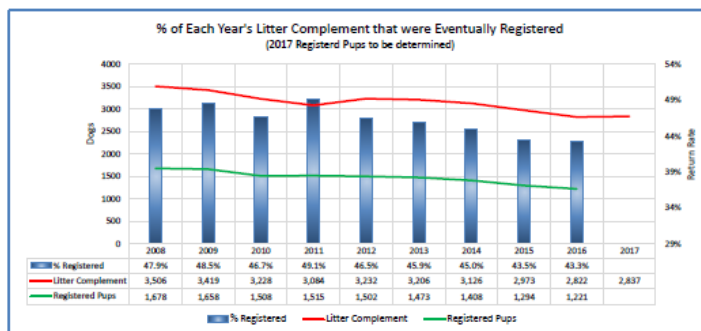
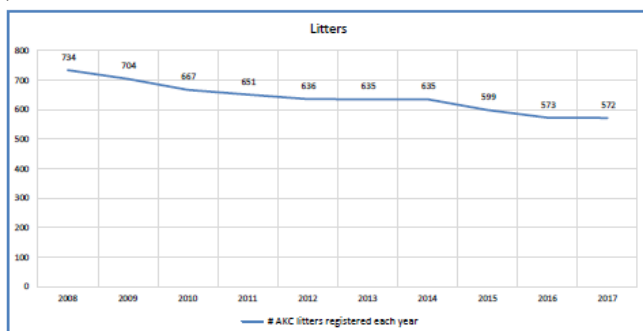
	2008	2009	2010	2011	2012	2013	2014	2015	2016	2017	2018
% Change YOY											
Litters	N/A	-13.2%	-13.1%	-11.6%	-8.7%	-6.5%	-3.3%	-1.2%	1.0%	3.1%	-47.0%
Litter Complement	N/A	-12.8%	-13.1%	-12.6%	-8.1%	-7.4%	-3.6%	-0.5%	2.1%	4.7%	-42.1%
Registered Pups	N/A	-13.2%	-12.2%	-12.6%	-8.2%	-7.9%	-3.1%	-2.2%	2.0%	-3.1%	-72.5%

These % are calculated to show the change each year from the previous year.

% Change Relative 2008	2008	2009	2010	2011	2012	2013	2014	2015	2016	2017	2018
Litters	0.0%	-13.3%	-24.6%	-33.5%	-39.3%	-43.3%	-46.3%	-47.0%	-46.5%	-43.5%	-70.2%
Litter Complement	0.0%	-12.8%	-24.3%	-34.0%	-39.4%	-43.9%	-47.0%	-47.3%	-46.2%	-43.7%	-70.2%
Registered Pups	0.0%	-13.2%	-26.4%	-30.9%	-36.6%	-38.4%	-42.0%	-40.7%	-39.5%	-41.3%	-83.8%

These % are calculated to show the change each year compared to 2008.

Bull Terriers



Attached please find the latest version of the Parent Club Registration Stats, for your breed, your group(s), and all breeds. Please feel free to share the information with your club membership as you see fit in order to stimulate discussion about registration and possible changes or improvement initiatives per the original rationale for sharing (below).

Original rationale for this data sharing (from email dated 11/07/2017):

Although registration numbers have been on the rise now for a number of years after nearly two decades of continuous decline, some breeds are not rebounding as well as others. The Board and staff have discussed this matter, and we are reaching out to each Parent Club to determine how AKC registration processes and procedures can be improved to better support breeders and to explore how AKC could further assist Parent Clubs in their mission to develop and steward their breeds. Additionally, the Board has asked that certain registration information be shared with each Parent Club in order to provide a statistical snapshot of the current state of each breed and to stimulate discussion within and between clubs and staff regarding possible improvement initiatives.

As noted in the previous distributions of this information, the attached includes the counts of litters, litter complement, and dogs registered for your breed since 2008. [Note: "Complement" is the count of pups from each AKC litter.] The .pdf also includes the counts of unique dogs and bitches that are breeding and participating in conformation. Those counts are finite and will change only minimally over time and generally only due to cancellations of litters, dogs and/or awards.

On the other hand, there are a number of rows that indicate "to date," such as "Total Complement in Conformation (to date)." All rows with "to date" information are refreshed every time we reprocess this report. This is so you will have an accurate picture of the puppies produced in any given year. For instance, of the 1.7 million puppies produced in AKC Litters in 2008 (a.k.a., the Litter Complement for 2008), over 157,000 or 9.3% participated in conformation as of June 2018. Every time we update this chart, the system looks at all litters from 2008 to see if any additional dogs have started in conformation. Obviously, there will not be many 2008 pups entering Conformation or Breeding for the first time in 2018, but there will be many updates to the information known about pups born in 2017 and 2018.

As always, please do not hesitate to reach out to me for additional information or to discuss your breed's data and your thoughts on how we can improve.



Regards,

Mark Dunn

Executive Vice President

Visit our website: www.akc.org



<http://www.1portraits.com>

Artwork created from your personal photographs.

We can create portraits that look like oil paintings, water colours, charcoal and grunge portraits.

Great as gifts or to display in your home.

Pets, children, special events, vintage photographs

Please visit our website for a gallery of our work.





Championship & Open Show & Special Shows
24th and 25th November 2018
 K.C.C. Park 655 Westernport Highway Skye
 Entries close 12th November 2018

24th November Judge: Mr. Anthony McCann (UK)

Championship Show

24th November Open Show Judge: Mrs. Suzanne Tennant

25th November Judge: Mrs. Diane Riley (NZ)

Special Show

Open Show to commence at 9.00am Championship Show not before 12-00pm

Special Show to commence at 9-00am

ROM Points available for Champ. & Special shows only

Enquiries to: Mr David Hirst, 03 5998 7493 ALL entries to be ONLINE.

No late entries will be accepted. Closing date 12th November.

Enter ONLINE at www.showmanager.com.au

All enquiries to the Show Secretary on 03 5998 7493 please no calls after 8pm.

Championship & Special Show – entry fees

Members Entry for each show:	Non-Members entry for each show:
Entry = \$20.00	Entries = \$25.00
Baby Puppy = \$10.00	Baby Puppy = \$10.00

Open Show Only – entry fees

Members Entry	Non-Members entry
Entry = \$10.00	Entries = \$12.00
Baby Puppy = \$5.00	Baby Puppy = \$5.00

Combined Catalogue: \$15.00 (includes all shows) **Trophies and Sashes for all "In Show" awards.**

Classes: Dogs 12, 1, 2, 3, 4, 5, 10, 11, 12, 18* Class 12 & 18 for Champ. Show ONLY

Bitches 12A, 1A, 2A, 3A, 4A, 5A, 10A, 11A, 12A, 18A* Class 12A & 18A for Champ. Show ONLY

R.O.M. Points available for Champ. & Special shows

Please note no challenge points will be available at the Special show.

This Event will be held in accordance with VCA Regulations, Codes, Policies & Procedures Please note Rule - 7.5.25 No handler or exhibit shall enter the judging ring wearing or bearing any item which identifies by name, prefix, position or distinctive style an exhibit, exhibitor, breeder, sponsor or award; exhibit numbers excepted.

*18 & 18A – As per ANCC clause 3.2 Class 18/18a is ineligible to compete against entire exhibits for challenge or best of breed awards. To compete in neuter classes, a dog must be registered as a neuter on the main register.

*12 & 12A – Veterans Class for dogs and bitches over the age of 7 years of age. The winners of these classes are not eligible to compete for Best Dog, Best Bitch, or Best of Breed.

The Bull Terrier Club of Victoria Inc. reserves the right to refuse any entry.

Coming Soon: WATCH THIS SPACE!!!!

We were overloaded with 100's photos for our Bully Calendar that we decided to make a book as well.

Thank you for your Pics.



CUSTOM ARTWORK IN THE HEART OF FITZROY

True Addiction Tattoo

RUN BY VETERAN TATTOOIST COLIN GOWER
A TEAM OF ARTISTS THAT CAN ACCOMMODATE MANY STYLES

136 JOHNSTON ST, FITZROY
0400 662 337
colingower.73@gmail.com

facebook.com/trueaddictiontattoo
@trueaddiction2016

VEBO PET

FOR CAGES & ENCLOSURES



maffravet.com.au

MAFFRA VETERINARY CENTRE

- Address: 10 Johnson Street, Maffra
- Telephone: (03)5147 1177
- Fax: (03)5147 1650
- Email: vets@maffravet.com.au

Reproductive Services available including insemination/progesterone

These two pages to follow are from the Fifth Annual International Championship Show held on 11th and 12th June 1926 in Queensland

BULL TERRIERS



FOD BULL TERRIERS.

If you want:

- A good house dog
- A good guard
- A good watch-dog
- An intelligent chum
- An affectionate pal
- A dog that is an "all round" sportsman"
- A prize winner
- A breeder of prize winners—

Apply to Address below.

You will have a square deal, prompt, and careful attention.

WE DO OUR BEST, GET THE BEST, GIVE THE BEST.

MRS. R. ST. J. MITCHELL,
Fod House, Dunfermline Fifehire, Scotland.
Cable, Mitchell - Fod - Dunfermline.
Telephone, Dunfermline 422.

Catalogue

TROPHIES WILL BE PRESENTED AND PRIZE MONEY PAID AT ODDFELLOWS HALL, CHARLOTTE STREET, at 7.30 p.m. JULY 1st, 1926.

ALL DOGS MUST BE KEPT ON BENCHES.

(See Conditions of Entry.)

3 Litter Class—Toys and Terriers.

Trophy Presented by F. J. Walmsley, Esq.

- 3 AIREDALES. Breeder, F. L. South.
- 4 IRISH TERRIERS. By Red Dennis ex Irish Smiles. Breeder, Mr. Ottaway.
- 5 BLACK PUGS ex Golly Wogo. Breeder, Mrs. Griee.
- 132 WIRE HAired FOX TERRIERS. Breeder, Miss Colledge. £5/5/1 each.

BULL TERRIERS.

Class 75—Puppy Dog.

- 76 DEVONIAN SCOUT (27/11/25), Ch. Devonian Bruiser—Melbona. Breeder and Owner, G. H. Tink.

Class 76—Novice Dog.

- 76 DEVONIAN SCOUT. Owner, G. H. Tink.

Class 77—Australian-bred Dog.

- 77 PADO (12/12/23), Devonian Rex—Devonian Rose. Breeder, G. H. Tink. Owner, S. P. McCready.

Class 78—Open Dog.

- 77 PADO. Owner, S. P. McCready.
- 78 Ch. DEVONIAN BRUISER (24/4/23), Hellfire Syd—Gr. Ch. Devonian Rose. Breeder, G. H. Tink. Owner, J. McKay.

Bull Terriers

Brood Bitch Ch. EUREKA SNOWFLAKE

By Gr. Ch. Sir Nigel ex Gr. Ch. Berrima Dixie Queen.

Queensland's Most Typical Bitch

Stud Dog Gr. Ch. BROADLEA LADDIE

By Ch. Diamond Dick ex Gr. Ch. Berrima Dixie.

Approved Bitches only. Second to None in Q'land.

Owner: Mrs. A. BAILEY,

Eureka Kennels,

Elizabeth Street, Rosalie.

20 years experience breeding and Exhibiting.

SIDNEY RILEY STUDIO

First - Class Portraiture AT REASONABLE RATES.

We can make a Successful Photograph of
YOUR Group, YOUR Family, YOUR Child,
or **YOUR Prize Dog.**

MAKE AN APPOINTMENT EARLY

Two Doors from Courier.

Central 1589.

Class 79—Puppy Bitch.

79 RONVILLE BEAUTY, 20/9/25), Gay Lad of Westcourt—Ronville Queen. Breeder and Owner, V. Zahner.

80 EUREKA DUSTY PAL (16/8/26). Breeder, J. Pemberthy. Owner, Mrs. A. Bailey.

Class 82—Open Bitch.

81 MELBONA, Ch. Diamond Dick—Com. Gr. Ch. Berrima Again. Breeder, C. Frost. Owner, G. H. Tink.

79 RONVILLE BEAUTY. Owner, V. Zahner.

80 EUREKA DUSTY PAL Owner, Mrs. A. Bailey.

82 Gr. Ch. DEVONIAN ROSE (16/9/20), Gr. Ch. Windsor Bob—Ch. Broadley Dixie. Breeder, T. Spinks. Owner, G. H. Tink.

Kennel Association Challenge Cup, value £4/4/-, for best Bull Terrier in Show, to be won twice by same owner, not necessarily same dog.

Winner 1924, Devonian Bruiser. Owner, J. McKay. Winner 1925, Pado. Owner, S. P. McCready.

The "Fod" Challenge Cup, value £5/5/-, presented by Mrs. R. St. J. Mitchell, Fod House, Dunfermline, Fife, Scotland, for best Bull Terrier (opposite sex to winner of Kennel Association Challenge Cup). To be won three times by same owner, not necessarily same dog.

SCOTTISH TERRIERS.

Class 24—Open Bitch.

18 Ch. BONNIE NOVAR (19/11/22), Ch. Blair Athol—Craigielea. Breeder, A. Todd. Owner, W. E. Peck.

19 BONNIE BRAE (2/4/24), Ch. Royal Craig—Bonnie Novar. Breeder, W. E. Peck. Owner, F. J. Walmsley.

The "Glengowan" Challenge Cup, value £2/2/-, presented by John K. T. Glen, Esq., Glengowan Kennels, Caldercruix, Lanarkshire, Scotland, for the best Scottish Terrier in Show. To be won twice by same owner, not necessarily same dog. Members only.

Note to Members and Breeders:

The Bull Terrier Club have DNA swab kits available for all breeders or owners of Pedigree bull terriers wishing to submit DNA samples from their animals to Animal Health Trust. The sample kits include a contact details form and five DNA swabs. A copy of pedigree and any health information is required with DNA submission. Kits may be taken home for completion and posting back to the UK. It is relatively cheap to post the kits and as the samples are stable once taken, they can be sent by general mail. We can also post them out to any breeders interested in providing this valuable DNA to researchers who have the best interests of our breed at heart.

THE BOOK OF DOGS

BY
G. W. KNOWLES
AUTHOR OF
"THE TALK OF THE TOWN," ETC.

LONDON: T. C. & E. C. JACK, LTD.
35 & 36 PATERNOSTER ROW, E.C.
AND EDINBURGH

circa 1924

BULL TERRIERS (Plate XXII.)

Next to the Bulldog the Bull Terrier is one of our most typical breeds. His origin is purely English. In the early years of the nineteenth century northern miners and London 'prentice lads, the ruffians of the towns, like the Corinthians and the Mohawks, and the bloods of the universities, all concentrated their canine skill on the production of a breed which should combine the strength and tenacity of the Bulldog with the activity of the Terrier. To effect this the Bulldog was crossed over a number of years with the White Terrier. The result was the Bull Terrier—a dog probably unequalled in any age for sheer pugnacity. He was bred to fight. He was a perfect combination of strength, activity, and courage, and the best examples have remained such down to the present time.



The next few pages contain historical
articles on Bull Terriers

TERRIERS

83

Ratting and fighting have always been his chief occupations. It is recorded that the famous Bull Terrier Jacko (1863) killed sixty rats in two minutes forty seconds; a hundred in five minutes twenty-eight seconds; and one thousand in a little over an hour and a half, and that he won two hundred matches. Contests of this kind were common in the first half of the nineteenth century. In fighting, of course, the Bull Terrier was usually matched against his own kind, but he was also pitted against badgers, bulls, bears, and other animals. Under such conditions it can be imagined that little thought was given to the appearance of the breed. If a dog had strength and ferocity that was a sufficient recommendation with his admirers. Many generations continued to display the wide bow legs, the heavy jaws, and patches of brindle colour derived from the Bulldog; and it was not until about the middle of the nineteenth century, with the advent of the show, that care was given to eliminate these marks and to produce a distinct and separate strain of dog of definite Terrier character.

Mr. Hinks's strain of Birmingham were amongst the first to display the pure white coat, the straight forelegs, and the sharper features which are now

always associated with the Bull Terrier. This result was attained by importing more White Terrier blood into the breed. It was argued at the time that one effect of this process would be to impair the fighting qualities of the stock, but this has not proved to be the case. On the contrary, there has been a distinct gain in speed and activity, and probably in size also. In days when such questions were settled by a practical test, Mr. Hinks actually arranged a match for a wager between his white Bull Terrier bitch Puss and a rival of similar weight of the older Bull Terrier strain. In less than half an hour Puss was completely victorious.

The silly and cruel habit of cropping the ears of the Bull Terrier continued almost till the end of the century, in spite of all laws and inspectors, and was not suppressed till the Kennel Club made the judges take a very definite stand against it. It was then found that considerable attention had to be given in the selection of dogs to the shape and poise of the ear, and to this day the breed suffers from the early neglect of this organ. Wide, open, and unshapely ears frequently diminish the tightness and compactness of appearance which should be found in all dogs of the Terrier class.

Less stress is now laid upon the whiteness of

the coat. This is a good move. For besides condemning a number of excellent dogs, the craze for pure whiteness frequently imported the very serious defect of deafness which so often accompanies it. Brindle Bull Terriers can now win prizes with any other colour, and brindle markings do not disqualify. There is a tendency to divide the breed into two classes: a smaller and a larger variety. The smaller, or toy variety, more resembles the old White Terrier, and is a handier dog for the town dweller and also less dangerous if, as so frequently happens, he should develop a very quarrelsome nature in his third or fourth year. Many of the larger champions have been exported, especially to the United States, where the finest specimens are now bred, and where the species rivals the famous Boston Terrier in popularity.

In choosing a dog regard ought to be paid to shape rather than to purity of colour. The forelegs should be straight and close. The tail should be carried straight in line with the back. The body should be large and muscular. The hind legs should be well apart, outstretched backwards, and very muscular. The head should be held well up, and should have a smart and alert carriage. Bull Terriers are very intelligent and faithful, and, in

PLATE XXII



OLD ENGLISH WHITE TERRIER
(Photo: Chas. Reid)



BULL TERRIER
(Photo: Sport and General)

spite of their forbidding looks, they are docile dogs. They are good-tempered and friendly towards human beings. During the first year or two they are seldom quarrelsome, and indeed are often quite timid in the presence of other dogs. But after the second or third year they usually develop strong fighting tendencies, especially after suffering injuries in early encounters.





BlackHawk

Every ingredient matters

All Australian.
Zero grains.
Zero fillers.

Black Hawk's simple guiding principle is that every single ingredient matters. That's why we use only the highest quality Australian sourced meats, freshest vegetables and juiciest fruits.

We are committed to nothing artificial, nothing fake, nothing but 100% real goodness. Every ingredient matters™

Join our breeder community today.

NEW
grain free

Available
in 15, 7 and
2.5kg bags



Proudly part of the
masterPet® family

 blackhawkpetcare.com.au  [/blackhawkpetcare](https://www.facebook.com/blackhawkpetcare)

© Registered Trademark © MasterPet Corporation Ltd

GOLDEN TRIANGLE BULL TERRIER CLUB
announces
SILVERWOOD Weekend 2018
Sawmill Creek Resort | October 17—22



Up-to-date information can be found at <http://www.silverwood2018.com> and at the GTBTC Facebook page. Merchandise with the official Silverwood logo will be for sale online beginning in July.

FUNDRAISING!!!!

The Bull Terrier Club of Victoria are running a raffle to be drawn at our November Specialty Show on 25th November 2018. We have posted out tickets to all members. We would love if you could each sell a book or return unsold tickets to us so we may sell them to others.

Member support for our fundraising efforts contributes vital funds to our club so that we can continue to promote and protect our beloved bull terriers. With show entries and breeder numbers declining over recent years, we rely heavily on these activities to raise the funds we need to do this and we really appreciate your support.

Tickets and money may be returned via the postal address or handed directly to one of our committee members at the show weekend on 24th and 25th November. Money can also be returned by cheque or bank transfer.

Bull Terrier Club of Victoria Inc.

BSB: 633000

Acc: 125398453

Reference: raffle

Thank you so much for your support.



2019 Calendar and Book

The Bull Terrier Club of Victoria are creating a calendar and book available for purchase soon. Details on price and ordering will be published as soon as available.

Thanks for your support—BTCV Committee

November Show Auction

The BTCV will be auctioning some unique bull terrier items at our upcoming November show.

We will also have some new and exciting items on our Promo trailer.

I hope all members will come down and support the club, even if you don't show!



Kidney ultrasound for polycystic = \$109.00

UPC (protein creatinine ratio) = \$109.00

Heart murmur (basic check) and patella check = \$76.00

Totalling \$294.00.

Monash Veterinary Clinic

1662 Dandenong Road

Oakleigh East VIC 3166

ph: 03 9544 7455

fax: 03 9543 4191

email: mvc@monashvet.com.au

website: www.monashvet.com.au

2018 RESUME

SANDY IRLAM

[NORTHERN TERRITORY]



I was born into the canine world, my parents owned, bred & exhibited various breeds over the years. I started out as a child handler, then on to showing & eventually breeding. In 2007 I commenced judging, with the Terrier Group. I am now a licensed ANKC Championship Show Judge for Toys, Terriers, Hounds & have my Dobermann Specialty License. I have judged my licensed Groups throughout Australia & have had the privilege of judging the following Specialties ~ ACT Terrier Club, NSW Country Jack Russell Club, ACT Hound Club, SA Tenterfield Terrier Club & in the NT the groups I specialise in Terriers & Hounds.

My first contact with a Bull Terrier was in 1976 when I met Matilda House (HUNKPAPA). My first Specialty was in Canberra in 1978 which was judged by the world renowned Mrs Eva Wetherill (SOUPERLATIVE). In 1980 I purchased my first Bully from Mike Plane (XIPHERES), who I campaigned successfully at All Breed shows. (Hunkpapa Chequicto) was purchased in 1981, who I showed at Specialty & All Breeds shows. Throughout 1985/1986 I handled exclusively for HUNKPAPA with one being my own multi award winning bitch (Ch Hunkpapa China Doll) & most recently in 2009 until her untimely passing I successfully campaigned (Ch Maolmhin Madison Avenue) in the All Breeds arena to multiple Group 1st, In-Group & In-Show awards.

In 1990 myself, along with Matilda House (HUNKPAPA), Mike & Di Cross (MISSIGAI), Mike Plane (XIPHERES) & other breed enthusiasts the ACT Bull Terrier Club was founded, where I had the honour of being appointed the founding Secretary.

Throughout my 42 year association/involvement in the breed, I have competed at Specialty shows throughout Australia & was ringside at the inaugural Trophy Show in 1979. Whilst watching Bully judging in the UK, I was fortunate enough to sit with Carol Larkin (BOOKSALE) where we discussed the breed at length. I also had the honour of watching Tom Horner (TARTARY) judge & later talking with him.

Living in the Northern Territory restricts me from attending Specialties on a regular basis, however, I take full advantage when the opportunity arises, fortunately an opportunity arose in 2017 where I attended the most prestigious event on the Australian Bull Terrier Calendar the Bi-Ennial Trophy Show, where I discussed the animals being exhibited & the breed in general with fellow breeders.

**Sandy Irlam recently qualified to award ROM points.
Congratulations Sandy!**

**We also congratulate Tony Wiseman and Di Cross for
qualifying to issue ROM points as trainee judges.**

Breeders Note!

Changes to Dogs Victoria Rules.



- 6.12 *Parentage Proven for Registration*
- 6.12.1 *All puppies whelped after 01 January 2020 and being registered on the ANKC Ltd database as Main Registered are to be Parentage Proven by DNA. All results are to use the International Society for Animal Genetic (ISAG) marker and are to be submitted to the member body prior to registration.*
- 6.12.2 *Where a breeder makes application to upgrade a dog to the Main Register then the dog is to be Parentage Proven as per 6.12.1 prior to being upgraded.*
- 6.12.3 *Collection and testing of the DNA sample is to be conducted pursuant to protocols at Section 2 of these Regulations.*
- 6.12.4 *All dogs, frozen semen and Fertilised Ova imported into Australia from 01 January 2020 are to be Parentage Proven in accordance with this section.*
- 6.12.5 *All Frozen semen registered after 01 January 2020 is to be Parentage Proven in accordance with this section.*

**Did
you
know?**

There is now a minimum mating age of 12 months for all male dogs (VCA COP 20.1.12 refers), other than the German Shepard Dog which remains as 18 months.

Paul Haseldine—Critiques 5th May 2018

Firstly thank you to the Bull Terrier Club of Victoria for the appointment it was a pleasure to judge at your show and I am thankful for the appointment. It was great to judge so many bull terriers with so much breed type and virtues that there are many deserving dogs out there being shown, it made some of the decision in several classes very hard and there were several close decisions. It is rewarding to see many promising youngsters coming up in the breed.

Baby Puppy Dog

1st: Bullalaris Blue Fury 5 month old Brindle dog. A well balanced puppy with a strong sweeping profile with correct scissor bite and canines although a little tight. Great breed type with well angulated front and rear with strong bone for a baby and moved well. Overall a little more substance in head and body of the other babies.

2nd: Braxstar Cruisin For A Bruisin (AI) 4 month old white dog, who is also a lovely well-constructed balanced baby with a pleasing head and correct scissor bite and canines. Strong prosternum and moved and showed very well for a young baby.

3rd: Semajon Slick Reef 3 month old white dog. A very promising baby who is well balanced and showed his heart out just not of the maturity of the first two.

Puppy Dog

1st: Harrick Remarkable Adam (AI) 10 month old white dog who is very up-standing dog white captivating expression and pleasing non-tapering profile. Strong bone on tight feet. Well angulated shoulder with strong neck flowing into topline which was held well on the move and also balancing out with strong rear angulation.



Junior Dog

1st: Balgay Sunrise Sid 1 year old white male. Another tall upstanding dog with adequate head with good width and fill. Strong quality bone on tight cat feet. Well angulated in the front and read with a strong topline. Overall a well-balanced dog that moved and showed well. Pleasing type of dog. A pleasure to award him RDCC.

Intermediate Dog

1st: Potens Ghost Of Harrenhal 1 ½ year old White dog. Balanced dog with well-constructed head with sweeping profile and excellent expression and correct scissor bite. Well flowing neck although would prefer better lay of shoulder. A dog with strong quality bone who showed well.

2nd: Stardom Odin 2 year old Red dog with a strong head piece with plenty of width and fill, mouth just off. Well angulated front and rear however would like to see a shorter back, unfortunately didn't want to show to his best today which didn't help.

3rd: Jewelbull Assault And Battery 2 year old white dog, overall a well-balanced typey dog who wasn't happy about showing indoors today which it made it hard to access him in the ring.

Australian Bred Dog

1st: Ch Alsueno Brookers Boy 2 ½ year old Black brindle dog with a pleasant head with excellent expression and used his ears well. Would have preferred more angulation front and rear which showed on the moved, however a well-balanced dog in good condition who showed well.

Open Dog

1st: Jacamar Fury Road (AI) 2 year old red dog who has matured into a strong powerful dog with a well filled head with an excellent eye catching strong profile. He has a keen eye and uses his ears well. Strong neck into shoulders with quality round non-tapering bone. Good hindquarter and moved with power and purpose. Showed himself with a strong presence in the ring. It was a pleasure to award him Dog CC and onto Best In Show.

2rd: Bullimarvic Face Of Sarbow 6 year old White dog who also a dog of excellent quality and breed type with pleasing head and overall type and balance who was well angulated, just not the overall substance or finish of the first place.

3rd: 2nd: Wakatang Hells Angel 5 year old white dog who was unfortunately lame on the day but still showed well despite this with good virtues of the breed.

Bitches

Baby Bitch

1st: Braxstar Cover Girl 5 month old white, a heavy weight bitch with strong powerful head with correct bite. Quality bone and overall substance. A pleasing baby who moved and showed exceptionally well, looking forward to seeing her mature.

2nd: Bully Silk Als Angel 3 month old brindle with pleasing head with correct scissor bite. Balanced baby with adequate bone and substance for age, also showing well for age.

3rd: Braxstar Sweet Black Angel (AI) 4 month old Black Brindle bitch who also showed well. A very promising puppy with the virtues of the breed, just not the overall substance of the first two.



Minor Puppy Bitch

1st: Jacamar Pogue Mahone 7 month old Red bitch with a sweeping profile with good bite and canines. Good length of neck flowing into well placed shoulders with balanced rear, with well held topline. A bitch standing up on leg and presents herself well.

2nd: Excelsis Assassins Kiss 7 month old white bitch. A well balanced bitch with good breed virtues, however not the substance of the first place.

3rd: Excelsis Heart Of Gold 7 month of Brindle bitch. A quality puppy with decent head expression although with ears still down and would like to see a stronger topline.

Puppy Bitch

1st: Bullpatchy Special Date 11 month old white bitch. Overall a quality bitch with strong head with good width with a good scissor bite and canine placement. Reaching neck which flowed into well placed shoulders with quality round bone. Balanced bitch and consequently moved well and showed well.

2nd: Harrick Sweet Sofie Rose (Ai) 10 month old white bitch. Just not quite the finish of the first place winner, however had better head with sweeping profile and ear set and showed well however obviously not happy inside, despite this still a quality bitch.

Junior Bitch

1st: Bullroy Buddie Crazy 1 year old white bitch. A powerful little bitch that caught your eye as soon as she entered the ring with well filled head and sweeping profile and great expression also with good mouth. Decent length of neck flowing into well placed shoulders with prominent prosternum, with quality round bone. Balanced bitch with strong short back with well angulated rear on good well let down hocks. Moved well as expected with purpose and drive and shown very well. A pleasure to award her BCC onto Runner up Best In Show.

Intermediate Bitch

1st: Samahdi Sweet Surprise 1 ½ year old white bitch, a powerful bitch with virtuous head with good scissor bite. Well balanced front and rear with good quality bone and substance, just would like to see her a little shorter in back.

2nd: Ch Excelsis Electra 1 ½ year old Red bitch. A quality bitch with pleasing head, just not the substance of the first place winner and unfortunately did get spooked and wasn't happy to be in the ring, despite this was well handled.



Australian bred Bitch

1st: Bullpatchy Your Love As Fate 11 month old white bitch. A quality white bitch with strong head piece with pleasing profile and width. Balanced typey bitch with virtuous breed features, a well angled front and rear with strong topline and well let down hocks. A substantial bitch with quality bone. A very pleasing bitch who I was happy to award RBCC.

2rd: Potens Dark Wings 1 ½ year old Black brindle bitch, once again a well-balanced bitch with an impressive head profile. Not as strong in the topline as first place or the substance of the winner. However a pleasing balanced bitch that was shown and presented well.

3rd: Bullraider Black Pearl 1 ½ year old Solid Black brindle bitch. Not the overall substance of the first two place getters and more moderate in angulation however a quality bitch, in a strong class.

Open Bitch

1st: Braxstar Batchelor Girl 2 year old Brindle bitch. A solid balanced bitch, with well-balanced front and rear and holding topline well on the move. A pleasing head piece with good ear placement and expression. A bit lower on leg than others however excellent overall substance.

2nd: Potens Sunspear 1 ½ year old brindle bitch. A leaner, leggy bitch than first place, with not the overall substance of first. Very keen expression form pleasing head piece.

3rd: Jewelbull Lucifers Angel 3 year old Brindle bitch. A balanced typey bitch just lacking the overall substance and finish of the first two in the ring.



SIRESON ICE

DOMESTIC & INTERNATIONAL CANINE SEMEN
TRANSPORT, STORAGE AND LOGISTICS

***“WHEN
EXPERIENCE
MATTERS . . .***

*If you are looking at investing in frozen semen for your breeding program
then only the Best will do*

*Sires On Ice have over 40 years combined experience in all aspects of
Canine Reproduction and Importing & Exporting Frozen Semen*

-  Surgical and Vaginal Inseminations
-  Ultrasounds
-  Semen Collections, Freeze & Storage
-  Domestic Semen Transport
-  In House Progesterone Testing – Results approx 1 hour
-  Mobile Collections and Freeze - Packages for owners with multiple stud dogs
-  International Collection Packages: USA, UK, NZ & various European countries
-  Exports
-  Imports
-  Collections & Freeze
-  Individual & Consolidated Shipments Worldwide
-  Cost Effective Storage

**PROFESSIONAL, EXPERIENCED & COST EFFECTIVE SERVICE
SPECIALISING IN REPRODUCTION & FROZEN SEMEN LOGISTICS**

NSW: 02 4375 1001

Victoria: 0416 274 251

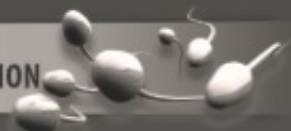
We also have clinics in
Port Macquarie NSW, Queensland, South Australia & Western Australia
and overseas in
New Zealand, United Kingdom, United States, Hungary and Romania



FREEZE

TRANSPORT

INSEMINATION



**web: www.siresonice.com
email: info@siresonice.com**



BTCV Championship & Specialty Shows
Trophy & Sash Sponsorships

Championship 24th November 2018

Judge: Mr Anthony McCann (UK)

Specialty 25th November 2018

Judge: Mrs Dianne Riley (NZL)

Championship	Trophy \$20	Sash \$15	Specialty	Trophy \$20	Sash \$15
Best In Show	Julie Williams	Julie Williams	Best In Show	Julie Williams	Julie Williams
Runner Up Best In Show	Julie Williams	Julie Williams	Runner Up Best In Show	Julie Williams	Julie Williams
Challenge Dog	Jacamar (Mark Dowall)	Woodsell & Poplar	Best Dog	Bullpatchy (Chris Cook)	Woodsell & Poplar
Reserve Challenge Dog	Bullpatchy (Chris Cook)	Bullalaris (Peta)	Reserve Best Dog	Jacamar (Mark Dowall)	Catchalot Kennels
Challenge Bitch	Triple Zero First Aid Nigel Brooker	Triple Zero First Aid Nigel Brooker	Best Bitch	Triple Zero First Aid Nigel Brooker	Triple Zero First Aid Nigel Brooker
Reserve Challenge Bitch		Catchalot Kennels	Reserve Best Bitch	Delestro Kennels	Delestro Kennels
Baby Puppy In Show	Julie Williams	Julie Williams	Baby Puppy In Show	Julie Williams	Julie Williams
Minor Puppy In Show	Chewbacc a Kennels	Chewbacca Kennels	Minor Puppy In Show	Sledge Hammer Group	Sledge Hammer Group
Puppy In Show		Bullraider	Puppy In Show		Bullraider
Junior In Show	Frank Vitiello	Frank Vitiello	Junior In Show		Frank Vitiello
Intermediate In Show	Semajon Kennels	Semajon Kennels	Intermediate In Show	Potens Kennels	Potens Kennels
Australian Bred In Show	Potens Kennels	Potens Kennels	Australian Bred In Show	Delestro Kennels	Delestro Kennels
Open In Show			Open In Show	Chewbacca Kennels	Chewbacca Kennels
Neuter In Show					
Veteran In Show					

A huge thanks to everyone who donated towards our trophies and sashes.
Your support is wonderful!!



Bull Terrier Miniature Club Of Victoria

Georgina Oldridge Minibull Memorial -Champ Show
&
Speciality Show

These shows are Sponsored by



3 November 2018

Bulla Dog Complex - Uniting Lane, Bulla

Championship Judge: Mrs Sandy Irlam (AUS)

Speciality Judge: Mrs Moira Stewart (AUS)

- Georgina Oldridge Minibull Memorial Champ Show to commence at 9.00am with the Specialty Show not to commence before 1.00pm.

***Entries Close: Online 19/10/2018—Postal 12/10/2018**

Entries to: PO Box 1400 Pearcedale 3912

All enquiries to the Secretary on 0432 764 470 or to btmcv@y7mail.com. Please no calls after 9pm. Please ensure that all cheques are made payable to: **Bull Terrier Miniature Club of Victoria Inc.**

Please Note: Entries will not be accepted without fees and Exhibit Numbers will be available for collection on the day.

Entry fees for both the Champ & Speciality shows:

Members = \$20.00 per entry

Non Members = \$25.00 per entry

All Baby Puppies = \$15.00 per entry

*Combined Catalogue: \$10.00 (includes both shows)

* Light lunch provided. & After Show Nibbles

Classes to be judged in order: Dogs 1, 2, 3, 4, 5, 10, 11

Bitches 1A, 2A, 3A, 4A, 5A, 10A, 11A

Sash & Prize for all "In Show" awards.

R.O.M. Points available for the Champ & Specialty Shows at the judges discretion

Please note no challenge points will be available at the Speciality Show.

"PEOPLES CHOICE AWARD"

This Event will be held in accordance with VCA Regulations, Codes, Policies & Procedures (Effective 14 February 2013) Please note Rule - 7.5.25 No handler or exhibit shall enter the judging ring wearing or bearing any item which identifies by name, prefix, position or distinctive style an exhibit, exhibitor, breeder, sponsor or award; exhibit numbers excepted.

Committee will make the decision on the day if the event will be held in or out doors

Major Sponsor Cezar's Choice will be holding an information session on dog nutrition during the lunch break



Show Manager

Online Entries Available
www.showmanager.com.au



THE BULL TERRIER CLUB OF VICTORIA INC.

Application for Membership and Fee to:

The Secretary, PO Box 1635, MELTON WEST, VIC 3337 or bullterrierclubvictoria@gmail.com

I/we the undersigned wish to forward my/our name/s as prospective members of THE BULL TERRIER CLUB OF VICTORIA INC. and hereby agree to abide by the rules, bi-laws, constitution and code of conduct of the club and Dogs Victoria.

Full Name/s _____

Address _____

Suburb _____ Postcode _____

Phone _____

Email _____

Are you a member of Dogs VIC (or a State Body)? Yes ☐ No ☐

Dogs VIC (or State Canine Body) No. _____

Breeders Prefix _____

Signature _____ Date _____

Membership Categories and Fees

Membership Category	Annual Fee	Tick applicable	Joining Fee	Tick applicable
Dual Membership	\$25.00		\$15.00	
Single Membership	\$15.00		\$15.00	
Junior (Under 16 years)	\$5.00		\$5.00	
Prefix/Stud/Puppy Listing (for registered breeders) see note below.	ADD \$ 25.00		TOTAL PAYABLE	
VCA Levy – Applies to Non VCA members who reside in Victoria	ADD \$7.50 PER PERSON			

- Fees paid after 1st April will carry onto the following financial year, ending 30th June.
- Prefix/Stud/Puppy Listing is for registered breeders only. Fee includes listing on club website for one financial year. Listing can include kennel contact details and stud animals, puppies and adults that require rehoming. Puppy Officer will refer puppy enquiries to all members who pay for this service.
- No joining fee applies to members joined by their BTCV member breeder (as per 2001 Breeder membership drive)
- Re-joining fee applies to memberships not renewed by 31st July.
- Applicants will be elected by vote of committee at the first possible Committee Meeting held after receipt.
- Payment accepted via Cheque, Money Order (made out to Bull Terrier Club of Victoria Inc.) or may be electronically transferred or deposited to Bendigo Bank account: BSB 633000 Acc# 125398453, please email the club to notify of deposit. Reference should be your surname and "mship."

Breeder Directory Information

--

All members of The Bull Terrier Club of Victoria Inc. do undertake not to breed from, or exhibit, or cause to exhibit deaf Bull Terriers and furthermore that they will support the club in every way practicable to stop the breeding of deaf Bull Terrier dogs/bitches owned by members or anyone else. Members also declare that they will not offer for sale or be anyway concerned in the sale of deaf Bull Terriers. Members also agree that they will neither breed from, or offer for stud any animal which has suffered or is suffering from any inheritable painful defect. Note: The Club considers any dog deaf that cannot hear perfectly to be deaf.

Office Use Only:

Application Received	Membership Approved/Rejected	Amount Paid	Receipt Number	Club Officer (Signed)
/ /	/ /	\$		