

The Bull Terrier Club of Victoria Inc.

(Incorporated A0026517R)



May 2022
Bully News



COMMITTEE

President: Alison Sutcliffe

VP: John Williams

VP: Mark Dowall

Treasurer: Christine Cook

Secretary: Deborah Patterson

Show Secretary: Deborah Patterson

Website: Neil McCracken

NBTC(A) Delegate: Christine Cook

Newsletter: Deborah Patterson

Trophies/Fundraising/Sponsorship/
Catering/Event Management: Chris Cook
& Deborah Patterson

All Correspondence and Enquiries:

Post

Bull Terrier Club of Victoria Inc.

Attention: The Secretary

PO Box 1635

Melton West Vic 3337

Email

bullterrierclubvictoria@gmail.com

Web

www.bullterrierclubvic.com

Life Members

Vin and Shirley Healand

Alison Sutcliffe

Les Greenall

Cathy Sluga

Wilma Rawlings

Daryl Munn

Norm Jessup

Neil McCracken

Disclaimer:

Every care has been taken in the compilation of this magazine, but the Editor and the club assumes no responsibility for errors or omissions or any effects arising there from. Opinions expressed in these pages, whether in articles or advertisements are not necessarily the opinions held by The Bull Terrier Club of Victoria Inc.

President's Report

Hi Members,

It seems like I have just done this not long ago but time is flying and it soon will be half the year gone.

A huge congratulations to the winners of our last shows. A big mention to Christine Cook who had some lovely wins with her home bred dogs and the icing on the cake was her passing her Championship licence, well done Chrissy!

Queensland shows are next and good luck if you venturing that far. I went for a week to catch up with family not long ago, and it rained for the whole week, I hope the weather is better.

Winter is fast approaching, keep warm and remember your dogs feel the cold as well as the heat.

**Alison Sutcliffe
President BTCV**

From the Secretary

Hello Members,

Our recent shows went very well, it was the first time we since the trophy show in 2015 that we shared the ring with the mini club and I think it was a better atmosphere having all our exhibitors around the same ring. It was also much easier to have committees from two clubs work together as one especially as both club's have such limited committee. A big huge thanks to Kerry and Ivan for all their help, and to Ivan's parents for billeting Di Cross. Thanks to Sharelle and Chelsea for helping to set up the trophy table which looked marvellous and drew lots of positive comments. To Jen for her auctioning skills, and our entertaining steward Peter! Luckily for us he brought his wife with him, who was able to step in and replace our ticket writer who unfortunately had to isolate due to covid!

Thankyou to all our wonderful sponsors, and to Jacqui Taylor who (thanks to her pooches Instagram stardom!) has a lot of contacts with suitable sponsors and helped out our club by hitting them up to secure some great trophy donations. Also thanks to David Hirst and Heather Simpson who kindly donated some items for our auctions this year.

If you missed our show, the classes were Livestreamed for us and the footage is up on our FaceBook page.

Cheers Deb

30th April Championship Show

Judge: Mrs Di Cross

Results

Best In Show - (28) BULLPATCHY PRETTY RIVER A.I.

Runner Up Best In Show – (7) CH KAHA HIGH ROLLER (AI)

Best Dog – (7) CH KAHA HIGH ROLLER (AI)

RU Best Dog – (10) CH POTENS DREAD FORT

Best Bitch – (28) BULLPATCHY PRETTY RIVER A.I.

RU Best Bitch – (19) BULLPATCHY MOONLIGHTS SHADOW

Best Baby – (12) REDMONT BEWITCHED

Opposite Baby – (1) STURGIS THE BIG LEBOWSKI

Best Minor - (2) BALGAY FAT BOY HARLEY

Opposite Minor – NA

Puppy – (16) AUBIEDYNASTY WHITE SAPPHIRE

Opposite Puppy – (3) BALGAY LETS GO HUGO

Best Junior – (19) BULLPATCHY MOONLIGHTS SHADOW

Opposite Junior – (5) ZEEJAY HIRED GUN

Intermediate – (7) CH KAHA HIGH ROLLER (AI)

Opposite Intermediate – (24) BULLPATCHY DARLING RIVER (AI)

Australian Bred – (8) BULLPATCHY SANDRO HIT

Opposite Australian Bred – (26) POTENS RAINBOW SERPENT (AI)

Open – (28) BULLPATCHY PRETTY RIVER (AI)

Opposite Open – (10) CH POTENS DREAD FORT





*(Above) Best In Show — Best Bitch — Best Open
Bullpatchy Pretty River AI*



*(Above) Runner Up Best In Show — Best Dog — Best Intermediate
Ch Kaha High Roller AI*



 **BlackHawk®**



(Above Left) Best Baby Puppy In Show — Redmont Bewitched



(Above Right) Opposite Baby Puppy In Show — Sturgis The Big Lebowski



(Above Left) Best Minor Puppy In Show — Balgay Fat Boy Harley



(Above Right) Opposite Intermediate In Show — Bullpatchy Darling River AI



(Above Left) Best Puppy In Show — Aubiedynasty White Sapphire



(Above Right) Opposite Puppy In Show — Balgay Lets Go Hugo



(Above Left) Best Junior In Show - RU Best Bitch — Bullpatchy Moonlights Shadow

(Above Right) Opposite Junior In Show — Zeejay Hired Gun



(Above Left) Best Australian Bred In Show - Bullpatchy Sandro Hit

(Above Right) Opposite Australian Bred In Show — Potens Rainbow Serpent AI

(Below) Opposite Open In Show — RU Best Dog — Ch Potens Dread Fort



Bull Terrier Club of Victoria Championship Show 30 Apr 22 - Critiques—Di Cross

Thank you to the Club for the invitation to judge your Championship Show. I thoroughly enjoyed myself – who wouldn't when you are surrounded by Bull Terriers! Thankyou to the exhibitors for your entries and sportsmanship and thankyou to the committee for all the hard work that obviously went in to have the show. I know only too well what goes on behind the scenes and without this hard work there would be no shows at all. Thankyou again to all. Yours in Bullies.....Di Cross

Class 1 Baby Puppy Dog

1....1 CAROL KRAWCZYK STURGIS THE BIG LEBOWSKI 3100442017 06 Dec 2021 Bred By: JEN WOODSELL Glenbull Razor x Bullraider Brindle Beauty. Immature young male finding his way. Developed forechest with strong straight front legs. In lovely condition. Head lacks fill and strength at this age but time and maturity will see it develop. Dark eye and well placed ears. Pleasing expression. Still a little loose in movement but enjoyed his time in the ring.

Class 2 Minor Puppy Dog

1...2 Anastacia Charuvastra BALGAY FAT BOY HARLEY 3100435831 11 Aug 2021 Bred By: Mr RJ & Mrs R Eysers Shirvin Eldorado Man x Shirvin Dazz Razamataz. Rangy young pup needing to mature. Enough bone for size. Head lacks development but maturity will see changes. Correct mouth. Little loose in movement resulting in reduced reach and drive. Tidy underline.

Class 3 Puppy Dog

3 Ms P Lachmund. Mr C Harmon BALGAY LETS GO HUGO 3100435832 11 Aug 2021 Bred By: Balgay Shirvin Eldorado Man x Shirvin Dazz Razamataz. Littermate to Minor dog and little bit more mature. Straight front. Strong bone. Dark well placed triangular eyes. Gentle arc to head. Little loose on the move. Rear angulation adequate.

Class 4 Junior Dog

1...5 John Williams ZEEJAY HIRED GUN 3100423716 18 Jan 2021 Bred By: john williams zeejay Glenbull Razor x Villrino Serenity. Strongly built who moved well. Well muscled. Correct mouth. Strong head but lacks a little in width of muzzle. Well sprung of ribs. Reasonable angulation front and rear. In good condition.

2...6 Ms P Lachmund. Mr C Harmon BULLALARIS BLACK OF KNIGHT 3100419991 20 Nov 2020 Bred By: Bullalaris Ch. Balgay Sunrise Sid x Bullysik Als Angel. Strong head with deep muzzle. Correct mouth. Broken arc in profile. Enough bone for size. Not as balanced as first place. Well muscled front but a little weak in rear.

3...4 IAN ALDRIDGE CH. SIRRAM SIAM 4100350844 08 Jan 2021 Bred By: Mr T Matsen & Mr R Balsillie Huatare Kehua x Ch. Huatare Shez Da Bom. Small compact dog with upright shoulder which affected front movement. Out at elbow. Tight feet. Dark triangular eyes and small well placed ears. Break in profile. Well muscled.

Class 5 Intermediate Dog

1...7 Rochelle Sharp CH KAHA HIGH ROLLER (AI) 3100393005 03 Jun 2019 Bred By: Rochelle Sharp Emred Devils Spy (Uk) x Bullysik Kryptonite. Typey. Strong muscular body with a balanced outline. Straight front. Filled arced head with lovely expression. Well sprung ribs. Tidy underline. In good condition. Nice length of neck from ears to withers. Tight elbows. Moves easily with reach and drive with requisite jaunty air. **Challenge Dog**

Class 10 Australian Bred Dog

1...8 Bullpatchy Knls BULLPATCHY SANDRO HIT 3100432138 20 Mar 2021 Bred By: Bullpatchy Knls Javarke River Pirate x Bullpatchy Shadows In The Nite. Unsure of himself in the ring. Straight front and enough bone for size. Head with broken profile. Would like more fill under eyes. Elegant length of neck from ears to withers. Well sprung ribs. Well muscled. Little loose in rear movement.

Class 11 Open Dog

1...10 MRS D PATTERSON CH POTENS DREAD FORT 3100399910 19 Nov 2019 Bred By: MRS D PATTERSON Harrick Remarkable Adam (Ai) x Potens Dark Wings. Balanced. Straight front with tight feet. Enough bone for size. Well muscled and conditioned. Tight elbows. Arced head with enough fill. Well placed eyes and ears. Moved well with reach and drive.

Res Challenge Dog

2...9 Bullpatchy Knls BULLPATCHY SOUPERLATIVE RIVER (A.I) 3100432137 20 Mar 2021 Bred By: Bullpatchy Knls Javarke River Pirate (A.I.) x Bullpatchy Shadows In The Nite. Unsure of himself in the ring. Filled head with slight break in profile. Deep muzzle. Well placed ears. Strong bone. Well sprung ribs. Nice length of neck. Weak rear affects movement

Class 1a Baby Puppy Bitch

1...12 Helen Shinton REDMONT BEWITCHED 3100443923 10 Jan 2022 Bred By: Helen Shinton Ch.Kaha High Roller x Sarajeni Dixie Chick. Very pretty little girl with lovely developed head and expression. Moved well for her first show. Well conditioned. Strong bone. Well angulated front and rear. Promising.

2...14 Mrs J Woodsell STURGIS SHEZA RANGA 3100442013 13 Dec 2021 Bred By: Mrs J Woodsell Glenbull Razor x Bullraider Brindle Beauty. Another pretty baby but not the head of first. Dark eye nice length of foreface. Straight front with enough bone. Little long from withers to base of tail at this stage.

3...11 alison Sutcliffe SEMAJON CUNNING STUNT 3100444556 10 Jan 2022 Bred By: alison sutcliffe Shirvin Color My World x Jacamar Southern Belle. Another baby with a lovely head. First time in the ring and very unsure of herself. Good bone for size. Nice angulation. Didn't want to move.

Class 2a Minor Puppy Bitch - withdrawn

Class 3a Puppy Bitch

1...16 Dean Garraway AUBIEDYNASTY WHITE SAPPHIRE 4100360456 19 May 2021 Bred By: Brian Donleavy Credem Avenger At Brasshead x Romanrazers Chica. Stylish feminine girl, first time in the ring. Enough bone for size. Straight front. Lovely expression enhanced by dark well placed eyes. Arced head and enough fill under eyes. Elegant neck. Well muscled. Moved reasonably well front and rear.

2...18 Samantha Carter CH SIRRAM WILD WITCH 4100359543 28 Jul 2021 Bred By: Terry Matsen Ch Fabnic Lord Candyman x Monkromony Queen Of Hearts. Straight front and enough bone for size. Developed forechest. Well conditioned. Gentle arc to head. Little long from withers to base of tail. Well set tail. Moved reasonably front and rear.

3...17 Neriman Blacker BULLYVIEW QUEEN OF HEARTS 3100435404 11 Jul 2021 Bred By: Miss J Hogg 3100035216 Awwalia Nike King x Shundrani Hot Chilli. Excitable girl at first show. Reasonable arced head and ears placed on top of head. Straight front though would like more bone for size. In good condition. Short upper arm and rear angulation affect movement.

Class 4a Junior Bitch

1...19 Bullpatchy Knls BULLPATCHY MOONLIGHTS SHADOW 3100432139 20 Mar 2021 Bred By: Bullpatchy Knls Javarke River Pirate (A.I.) x Bullpatchy Shadows In The Nite. Compact feminine bitch. Straight front with enough bone. Well filled arced head with well placed eyes and ears. Deep muzzle. Elegant length of neck from ears to withers. Well sprung ribs. Well angled front and rear. Tight feet. Moved well after settling down. **Reserve Bitch Challenge**

2...20 Leigh Pride BULROARUS ETHEREAL 2100555351 03 Nov 2020 Bred By: Tony Wiseman Bulroarus Bobby Dazzler x Bulroarus White Russian. Stylish elegant feminine girl with lovely head and expression. Deep muzzle. Straight front with enough bone. Developed forechest. Well sprung ribs. Long from withers to base of tail. Moved with ease around the ring.

3...22 Mrs J Woodsell STURGIS BEYOND THE VEIL 3100419847 29 Nov 2020 Bred By: Mrs J Woodsell Sturgis Stand And Deliver x Bullraider Shes So Fine. Well conditioned. Not the head of first two in the class. Dark well placed eyes. Straight front and enough bone for size. Well muscled. Moved reasonably.

Class 5a Intermediate Bitch

1...24 Bullpatchy Knls BULLPATCHY DARLING RIVER (AI) 3100419826 25 Oct 2020 Bred By: Bullpatchy Knls Javarke River Pirate x Bullpatchy Charlotte. Strongly built feminine girl. Straight front with good bone. Strong filled head and lovely expression. Developed forechest and deep chest. Well sprung ribs. Moved reasonably but close behind.

Class 10a Australian Bred Bitch

1...26 MRS D PATTERSON POTENS RAINBOW SERPENT (AI) 3100421969 30 Dec 2020 Bred By: MRS D PATTERSON Jacamar Fury Road (Ai) x Potens Dark Wings. Strongly built in good condition. Straight front with good bone. Strong head with depth of muzzle. Dark eyes. Developed forechest and depth of chest. Reasonable angulation front and rear so moved freely.

2...27 Rochelle Sharp KAHHA BIG BUCKS 3100393007 03 Jun 2019 Bred By: Rochelle Sharp Emred Devils Spy (Uk) x Bullysik Kryptonite. Stylish typey girl. Well conditioned and muscled. Pretty arced head with enough profile. Dark triangular eye. Well angled. Moved easily. In season so a little unsure.

Class 11a Open Bitch

1...28 Bullpatchy Knls BULLPATCHY PRETTY RIVER A.I. 3100419825 25 Oct 2020 Bred By: Bullpatchy Knls Javarke River Pirate x Bullpatchy Charlotte. Very stylish and balanced. Straight front with tight feet. Enough bone for size. Well filled arced head. Lovely expression with dark triangular eyes. Elegant neck from ears to withers enhances her outline. Lovely condition and colour. Well angled front and rear so moved with reach and drive. **Bitch Challenge**

2...29 John Williams ZEEJAY MILLION DOLLAR BABY 3100423715 18 Jan 2021 Bred By: John Williams Zeejay Glenbull Razor x Villrino Serenity. Strongly built with wide chest. Enough bone for size. Well filled head with gentle arc. In good condition. Rear angulation affects tail set and movement



Built Tough

AUSTRALIA'S
TOUGHEST DOG BEDS

WWW.DENALIDOGBEDS.COM.AU
[@DENALIDOGBEDS](https://www.instagram.com/denalidogbeds)

USE 'BULLY25' FOR 25% OFF UNTIL 30/11/22



1st May Championship Show

Judge: Mrs Pamela Brown

Results

Best In Show - (23) BULLPATCHY DARLING RIVER (AI)

Runner Up Best In Show – (18) BULLPATCHY MOONLIGHTS SHADOW

Best Dog – (8) BULLPATCHY SANDRO HIT

RU Best Dog – (7) CH KAHA HIGH ROLLER (AI)

Best Bitch – (23) BULLPATCHY DARLING RIVER (AI)

RU Best Bitch – (18) BULLPATCHY MOONLIGHTS SHADOW

Best Baby – (1) STURGIS THE BIG LEBOWSKI

Opposite Baby – (13) STURGIS SHEZA RANGA

Best Minor - (2) BALGAY FAT BOY HARLEY

Opposite Minor – NA

Puppy – (15) AUBIEDYNASTY WHITE SAPPHIRE

Opposite Puppy – (3) BALGAY LETS GO HUGO

Best Junior – (18) BULLPATCHY MOONLIGHTS SHADOW

Opposite Junior – (5) ZEEJAY HIRED GUN

Intermediate – (23) BULLPATCHY DARLING RIVER (AI)

Opposite Intermediate – (7) CH KAHA HIGH ROLLER (AI)

Australian Bred – (8) BULLPATCHY SANDRO HIT

Opposite Australian Bred – (25) POTENS RAINBOW SERPENT (AI)

Open – (10) CH POTENS DREAD FORT

Opposite Open – (28) ZEEJAY MILLION DOLLAR BABY



Apologies for the poor quality of some of the photos —Unfortunately my camera malfunctioned for this show - Deb



(Above Left) Best Baby – STURGIS THE BIG LEBOWSKI
(Above Right) Opposite Baby – STURGIS SHEZA RANGA
(Below Left) Best Minor - BALGAY FAT BOY HARLEY



(Above Right) Best Puppy – AUBIEDYNASTY WHITE SAPPHIRE
(Above left) Opposite Puppy – BALGAY LETS GO HUGO

 **BlackHawk**

(Below Right) Best Junior / RU Challenge Bitch – BULLPATCHY MOONLIGHTS SHADOW

(Below Left) Opposite Junior – ZEEJAY HIRED GUN



(Above Right)
Best Intermediate – BULLPATCHY DARLING RIVER AI
(Above Left)
Opposite Intermediate—RU Challenge Dog
CH KAHA HIGH ROLLER AI


WARDLINN
& CO



(Left L) Best Australian Bred—Challenge
Dog – BULLPATCHY SANDRO HIT
(R) Opposite Australian Bred – POTENS
RAINBOW SERPENT AI

Right (Left to right)
Best Open – (10) CH POTENS
DREAD FORT
Opposite Open – (28) ZEEJAY
MILLION DOLLAR BABY



*Best In Show / Challenge Bitch
Bullpatchy Darling River AI*



*RUBIS / RU Challenge Bitch
Bullpatchy Moonlights Shadow*

Pamela Brown Critiques
BTCV Championship Show 1st May 2022

Baby Puppy Dog

1 - STURGIS THE BIG LEBOWSKI

A very promising white dog with good balance. He has adequate profile and good fill. He is sufficiently strong for his age and moved with an easy jaunt air.

Minor Puppy Dog

2 - BALGAY FAT BOY HARLEY

An 8 month old substantial white dog with good balance. A promising type of dog. Good profile and very good fill. A moderately strong dog with good neck into well laid shoulder and correct return of upper arm. Correct spring of rib and short loin, good tail set and hindquarter angulation. Moved well with a jaunt air.

Junior Dog

5 - ZEEJAY HIRED GUN

1st A substantial white dog with a red ear patch. A strong dog with satisfactory balance and good size. A little longer cast. A strong head and would prefer more profile but has very good fill. Well set wicked eye and correctly placed ears. Strong neck into well laid shoulders, excellent spring of rib. Well knit ground covering moment, just prefer a little more of a jaunt air.

4 - CH. SIRRAM SIAM

2nd A white dog with a red ear patch and adequate balance. Would like just like more strength. Head lacking a little profile but with excellent depth right to the end. Wicked eye and well placed ears. Good neck into well laid shoulders and sufficient return of upper arm. Correct spring of rib with short loin. Would prefer a little more quality round bone and strength in the front legs. Moved well with a typical jaunt air.

6 - BULLALARIS BLACK OF KNIGHT

3rd A substantial black brindle dog. Also a nice type of dog with adequate profile and fill. Well placed wicked eye and correct ear set and carriage. Good neck into well laid shoulders, prefer more length and angle to upper arm. This makes him appear a little long in body. Correct spring of rib and angle of croup, but would like to see more angulation in his hindquarter and strength in rear. Moved freely.

Intermediate Dog

7 - CH KAHA HIGH ROLLER (AI)

An all white dog with excellent balance and proportions. Muscular and strong. Good profile and fill just a little dip in the brow. Beautiful wicked eye and good ears. Correct lay of shoulder and good return of upper arm. Very good spring of rib and short loin. Well set tail with strong hindquarters. Well knit movement with a jaunt air. **RESERVE CHALLENGE DOG**

Australian Bred Dog

8 - BULLPATCHY SANDRO HIT

A pure white dog of excellent size and substance with very good balance. Head with adequate profile and excellent fill. Correct triangular obliquely placed dark eye and good ear placement. One ear just lacking a little strength. Strong neck into well laid muscular shoulders and adequate return of upper arm with very good spring and rib and short loin. Well set tail and strong hindquarter. Moved with ground covering movement with a jaunt air, just tended to flick his front at times. **CHALLENGE DOG**



Open Dog

10 - CH POTENS DREAD FORT

A pure white dog with good balance and strength. Well proportioned and masculine. Good profile and fill with just a small dip in the brow. Head strong right to the end. Wicked eye and satisfactory ear placement. Strong neck into well laid shoulders and would like a little more length and angle in the upper arm. Good spring of rib and short loin. Strong hindquarters. Prefer topline a little stronger as he moved a little high in the rear. Ground covering movement with jaunty air.

Baby Puppy Bitch

13 — STURGIS SHEZA RANGA

1st A feminine red and white bitch with good balance. Good profile and fill at this point. Well placed eye and ears.

Well laid shoulders and a little short in upper arm, but still very well put together. Good angle of croup and well set tail. Hindquarters sufficiently strong. A little hard to assess movement today but a very nice type of bitch.

11 - SEMAJON CUNNING STUNT

2nd A white bitch with black ear patches, very feminine, only just over 3 months old. Very good profile and fill and an excellent type of puppy, well put together. Correct lay of shoulder and return of upper arm with very good balance. It was not possible to assess her movement but she was not worried about anything – just didn't fancy running around the ring!

Minor Puppy Bitch—Absent

Puppy Bitch

15 - AUBIEDYNASTY WHITE SAPPHIRE

1st A white bitch with two black ear patches. A very feminine pretty bitch with good balance and strength. Excellent eye and ear placement. Good profile and adequate fill. Sufficiently strong neck into well laid shoulders and good return of upper arm. Correct strength of round bone and very good feet. Adequate spring of rib, and short loin. Carrying just a bit much weight, but tail set and carriage is good with excellent hind angulation. Moved freely with a jaunty air.

17 - CH SIRRAM WILD WITCH

2nd A brindle bitch, also a very nice type of bitch, just a little bit longer cast. Good profile and adequate fill, well set eyes and ears. Correct strength of neck into well laid shoulders with adequate return of upper arm. Satisfactory spring of rib and just a little long in the loin. Good tail set and sufficient hind angulation. Moved well.



Junior Bitch

18 - BULLPATCHY MOONLIGHTS SHADOW

1st A substantial black brindle bitch. Well balanced, Strongly built, dense and muscular. Very good profile and fill, wicked eye, strong neck into well laid shoulders with correct return of upper arm. Forequarter strong and muscular. Strong bone and excellent spring of rib with short loin. Good angle of croup and tail well set and carried correctly. Excellent hind quarter angulation. It was difficult to assess her movement initially but when she got going moved truly with a jaunty air. **RESERVE BITCH CHALLENGE AND RUNNER UP IN SHOW**

19 - BULROARUS ETHEREAL

2nd A strong tri colour bitch, just a little longer cast which takes her out of balance for me. Beautiful head with excellent profile and fill and well placed eyes and ears. Sufficiently strong neck into well laid shoulders and adequate return of upper arm. Long rib cage and a little long in the loin. Strong hindquarters and good tail set and carriage. Moved and showed very well.

21 - STURGIS BEYOND THE VEIL

3rd A white bitch with black eye patch. A very feminine bitch, just lacking the strength of the first two. Head also lacking the profile and fill of the other bitches. Correct narrow triangular eye and well set ears. A well constructed bitch who showed well.

Intermediate Bitch

23 - BULLPATCHY DARLING RIVER (AI)

1st A black brindle bitch of excellent size, substance and balance. Excellent wicked triangular obliquely set eye and head with very good profile and fill. Great depth of head right to the end with a roman finish. Ears set just a little low and wide. Strong neck into well laid shoulders and correct return of upper arm. Excellent quality round bone and good feet. Well sprung ribs and short strong loin. Tail carried just fractionally high. Very strong hindquarters. Moved with a well knit ground covering action with a jaunty air. **BITCH CHALLENGE AND BEST IN SHOW**

Australian Bred Bitch

25 - POTENS RAINBOW SERPENT (AI)

1st A substantial strong but feminine tri colour bitch. Head with adequate profile with a correct roman finish and good fill. Strong neck into well laid shoulders and good return of upper arm. Long ribcage with satisfactory length of loin. Tail set a little high would prefer stronger topline as she moved a little high in the rear, but soundly with a jaunty air.

26 - KAHA BIG BUCKS

2nd A very pretty feminine white bitch just lacking the profile and fill of the first bitch, but with a beautiful eye and well placed ears. Well constructed forequarter and good spring of rib and short loin. Angle of croup just a little flat and tail set and carried a bit high. Decent hindquarter angulation and moved well.

Open Bitch

28 - ZEEJAY MILLION DOLLAR BABY

A substantial red and white bitch with adequate profile and good fill with excellent depth right to the end of the muzzle. Strong neck into well constructed front. A strong long ribcage with a little extra length in the loin. Croup a little flat and tail set slightly high. Very good hindquarter angulation. A strong free moving bitch.





**BTCV Championship Shows
Sponsorships**

Championship Show 30th April 2022

Judge: Mrs Di Cross

Championship Show 1st May 2022

Judge: Mrs Pamela Brown

Championship	Class sponsorship	Championship	Class sponsorship
Best In Show \$50	Zeejay Bull Terriers	Best In Show \$50	Sturgis Bull Terriers
Runner Up Best In Show \$30	Zeejay Bull Terriers	Runner Up Best In Show \$30	Sturgis Bull terriers
Challenge Dog \$25	Bullroy Bull Terriers	Challenge Dog \$25	Bullroy Bull Terriers
Reserve Challenge Dog \$20	Bullroy Bull Terriers	Reserve Challenge Dog \$20	Bullroy Bull Terriers
Challenge Bitch \$25	Bullroy Bull Terriers	Challenge Bitch \$25	Bullroy Bull Terriers
Reserve Challenge Bitch \$20	Bullroy Bull Terriers	Reserve Challenge Bitch \$20	Bullroy Bull Terriers
Baby Puppy \$20	Bullraider Bull Terriers	Baby Puppy \$20	Bullraider Bull Terriers
Minor Puppy \$20	Bullpatchy Bull Terriers	Minor Puppy \$20	Bullpatchy Bull Terriers
Puppy \$20	Kubhaven Bull Terriers	Puppy \$20	Kubhaven Bull Terriers
Junior \$20	Semajon Bull Terriers	Junior \$20	Semajon Bull Terriers
Intermediate \$20	Adam Combes	Intermediate \$20	Goulburnia Bull Terriers
Australian Bred \$20	Bullacktiv Bull Terriers	Australian \$20	Bullacktiv Bull Terriers
Open \$20	Kaha Bull Terriers	Open \$20	Kaha Bull Terriers

The Bull Terrier Club of Victoria wishes to thank all breeder sponsorship, without your support we couldn't keep running the shows and provide high quality prizes for our exhibitors.



I would like to thank Hanneke Van Meeuwen, AniCura Kliniek Voor Gezelschapsdieren Eersel, (The Netherlands) who provided me the translated version of this study and permission to publish. This study was conducted in 2017 as referenced here <https://www.anicuragroup.com/sustainability/research/research-projects-2017/>

Deborah Patterson

“Heart disease in the English Bull Terrier”

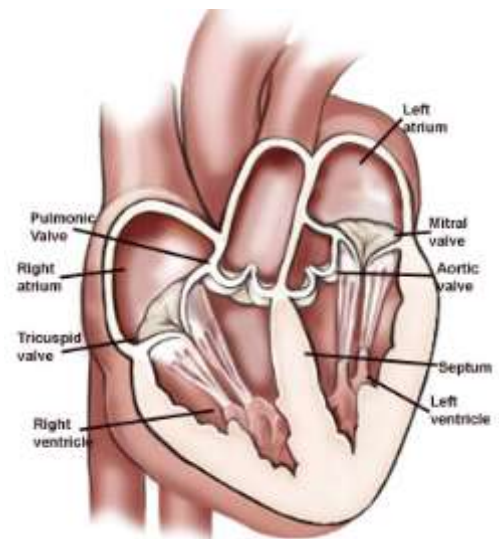
In English Bull Terriers murmur sounds in the heart are common and the breed may have higher risk for cardiac disease. In this study we will determine how common heart disease is in the Dutch and Belgian English Bull Terrier population, establish specific echocardiographic reference ranges and find out if specific cardiac conditions are genetically “inherited”.

According to literature English Bull Terriers (EBT) are frequently diagnosed with murmurs and are predisposed to having mitral valve abnormalities (valves between the left atrium and left ventricle) and a narrow aorta (left ventricular outflow tract obstruction (LVOTO)). These cardiac disorders could lead to congestive heart failure, syncope and sudden death. In May 2017 we (Mark Dirven and myself as vets and Frank van Steenbeek as geneticist) started a research project on ‘Heart disease in the English Bull Terrier’. This project was made possible by AniCura as they gave us a research fund. It took us 3 years and in this time we have obtained a lot of information. I want to thank the NBTC and everybody who helped us with our project again! We couldn’t have done it without you!! We are still processing a lot of the information. This is going to take some time.

Aim of the study

We are looking for answers to the following questions:

- Is heart disease a problem in the Bull Terrier Breed (narrow aorta, abnormal mitral valves)?
- If so, how often does this occur?
- Is this heart disease heritable and what is the mode of inheritance?
- Which dog can be used for breeding and how and when do we test this?
- Can we use a blood test on biomarker NTproBNP as a screening test for heart disease? NTproBNP increases in case of cardiac stress.
- In addition we would like to devise breed specific echocardiographic reference ranges for the EBT breed
- If possible we want to develop a genetic test on narrow aorta’s.



What did we do?

- 177 different adult dogs underwent a clinical examination and, after that, echocardiography with concomitant electrocardiography was performed. Blood was taken from all these dogs to determine the genetic profile and to measure the cardiac biomarker NTproBNP
- A cell culture was made from aortic cells of a dog with a normal aorta and a dog with elevated aortic blood velocity (an elevated aortic blood velocity occurs in a narrow aorta).
- The heart of a diseased English Bull Terrier with heart disease was evaluated by a board certified pathologist.
- We examined apparently healthy EBT puppies. At the age of 6,9 and 12 weeks and 6,12 and 18 months all puppies underwent physical examination and echocardiography with concomitant electrocardiography was performed. We started with 57 puppies. Thirty of these puppies were seen at all six time points.
- Blood for DNA research from 48 dogs was sent to the lab

Results

A murmur occurs regularly in the English Bull Terrier (31%). The average blood velocity in the aorta is 2.56 m/s. Only 18% of the dogs that were tested had an aortic blood velocity of less than 2 m/s. An aortic blood velocity of more than 2 m/s occurs in dogs with a narrow aorta. A minimal to mild mitral valve leakage was seen often (74%). We can say that we often see small abnormalities in the heart of the English Bull Terrier. The percentage of EBT with severe cardiac abnormalities or symptoms due to a heart problem doesn't seem any different than it is in other breeds. As a lot of EBT have mild cardiac abnormalities we can't exclude all these dogs from the breeding population. Of course dogs with severe heart problems shouldn't be bred. Other health problems should also be considered of course.

We are currently developing breed specific echocardiographic reference ranges for the EBT.

The NTproBNP blood test sadly can't be used as a screenings-test for having a narrow aorta. In case of a normal aorta the NTproBNP blood test is normal in 95% of the dogs. However, in case of a narrow aorta the NTproBNP blood value can either be normal or elevated.

The results of the cell cultures and the pathological examination still have to be interpreted.

Genetic tests show that having a narrow aorta is not caused by one simple gene but has a complex genetic background.

Until now we were not able to develop a genetic test.

Examination of the puppies

Thirty EBT were fully characterized at all six time points. A murmur was auscultated in 1/30 dogs at 6 weeks, 1/30 dogs at 9 weeks, 1/30 dogs at 12 weeks, 2/30 dogs at 6 months, 5/30 dogs at 12 months and 7/30 (23%) dogs at 18 months with a maximum intensity of 2/6. A minor mitral regurgitation was common (66%), but no mitral valve abnormalities were seen in this group. Four puppies showed an occasional arrhythmia. The average aortic blood velocity was 1.69 m/s at 6 weeks, 1.88 m/s at 9 weeks, 1.95 m/s at 12 weeks, 2.16 m/s at 6 months, 2.39 m/s at 12 months and 2.5 m/s at 18 months. At 18 months 7 dogs had a murmur although 28 of the 30 dogs had an aortic blood velocity > 2.0 m/s. One dog had a murmur 1/6 at two time points while the aortic blood velocity was < 2.0 m/s. No cause of this murmur was found.

In conclusion:

The aortic blood velocity increases from 1.69 m/s to 2.5 m/s during growth between the ages of 6 weeks and 18 months. This suggests that heart-screening for breeding based on aortic blood velocity prior to the age of 18 months is not to be recommended. As in many dogs with aortic blood velocity > 2.0 m/s a murmur was not detected, auscultation with a stethoscope does not seem to be a good screening test for detection of a narrow aorta.

Hanneke van Meeuwen

Mark Dirven

Special thanks to Erik Wouters



Important Points from this study:

- A murmur occurs regularly in the English Bull Terrier (31%)
- A minimal to mild mitral valve leakage was seen often (74%).
- Auscultation with a stethoscope does not seem to be a good screening test for detection of a narrow aorta.
- As a lot of EBT have mild cardiac abnormalities we can't exclude all these dogs from the breeding population.

*Mild mitral valve leakage or narrow aortic valves often do not produce a murmur and therefore stethoscope auscultation will not detect these mild heart faults. Mild faults can only be detected by doppler.

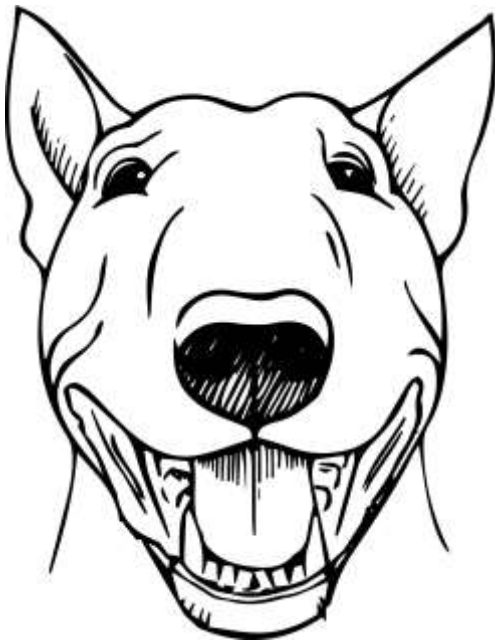
ATTENTION BREEDERS!

DOPPLER TESTING FOR \$275 PER DOG

Richard Wooley, Victoria's only qualified canine cardiologist, is unable to run doppler clinics at our shows this year due to his workload, however we can still get Richard to test our dogs at the discounted rate of \$275 per dog at UVET Werribee (and a few other spots in Victoria), if we can get groups of a minimum of 5 together.

This is great if you only have 1 or 2 dogs to test but want to take advantage of the cheap rate. If you would like to put your name down for an upcoming clinic or would like more information please contact me directly. I do have a few spots left for 29th June at Werribee. It has been encouraging to see breeders taking this up.

Cheers Deb Patterson 0403210590



Blast From The Past

During my ongoing digital archiving of our Club's Correspondence, I came across a letter from The National Poodle Council from 1999 that detailed issues facing canine organisations at the time and taken from a survey "National people and Pets Survey 1995". It was a very interesting and still current insight.

In comparison, I found the same survey from 2019 (link below). Many of the same issues are present today, but the increase of "designer breeds" is notable and no doubt, would be more so after Covid.

[ANIM001-Pet-Survey-Report19_v1.7_WEB_low-res.pdf](#)
(animalmedicinesaustralia.org.au)

WITH COMPLIMENTS
The National Poodle Council

At 3.6.3 of the ANKC Breed Councils' Conference Agenda is reference by the Bull Terrier Council to workshops put on by the RNSWCC.

Attached herewith is a precis of information regarding issues facing canine organisations in the present-day environment, a key subject of discussion at the second workshop.

Please note that, while this report was compiled for issue to our Council's member clubs, all credit for the contents properly belongs to the RNSWCC's Public Relations & Promotions Committee which provided the information through a number of presentations given on the day.

Regards,

Judy McMahon for National Poodle Council

July 1999

Extract from "National People and Pets Survey" 1995:-

"Fifty-three (53) % of those who do not at present own a pet would, in the future, like one. Most want a dog. The factors mitigating against them are mainly:

- Living in accommodation not suited to a pet, eg.
 - rented accommodation with no provision for pets
 - no yard for the pet's mental stimulation, play and leisure;
 - The absence of someone at home to care for the pet."
-

The changing face of society

THE PAST

Marriage and children priority : early- to mid-20s

Two parent family units

One parent supports family financially

Suburban life -- large outdoor living areas

Average family makes a holiday trip during Christmas/New Year break

THE PRESENT

Career priority : Marriage and children come later

More single parent families and singles living alone

Both parents work

Higher density living

Low-cost air travel permits many people to take several short trips each year

What are the issues for us?

- Shrinking membership
- Aging membership
- Fewer workers and volunteers and, generally, lower levels of involvement
- Diminishing revenues
- Loss of puppy sales
- Loss of show entries

All adding up to = Reduced opportunities for breed continuation

In an era when dog breeding and exhibiting can no longer be regarded as an amateur's hobby, we are increasingly reliant on the market's perception of ourselves and our activities. It would seem that we are failing to:

- address many of the changes which have affected our market
- address many of the needs which are relevant to our market

What changes have occurred that affect us?

- **Society.** We can no longer define the family unit by traditional images. There is no longer such a thing as "the average family". Family units are no longer stable, and increasingly fewer conform to the mum+dad+ two kids. Dual income households have become the rule rather than the exception.
- **Changes in the home environment.** The traditional Australian quarter-acre block has given way, in the major cities at least, to increasingly smaller holdings. Medium- and high-density housing are the focus of developers and planners.
- **Income.** The population as a whole has considerably higher disposable income, is better educated and has higher expectations. This new market wants entertainment and leisure catered for them and delivered to them.
- **Less time available.**
 - People generally have greater demands on their time; longer working days are a fact of modern life.
 - We have to compete with a greater variety of pastimes and evidently shows don't have the appeal they once held as a relatively healthy outdoor activity.
- **Anti-dog and anti-pet campaigns.** The intent of many of these may have been to educate or to increase community awareness of the responsibilities of pet ownership, but the spin-offs have been negativity towards pet ownership and poor public perception of breeders.
- **Increased legislation.** Legislation and the legal process have caused many restrictions on the way we live our lives and have sought to regulate the management of pet populations. This makes some people unprepared to commit to pet ownership.

Can we broaden our appeal?

(We have to if we are to survive)

- **Look at the image your club projects.** Most breed clubs regulate and manage canine activities from an internal perspective. *From the market's viewpoint this is generally seen as an elitist organisation that has nothing to do with pet ownership.*
- **Access to puppies and breeders.** Quite frequently a club's puppy referral (or breeder referral) service is not widely publicised. Sometimes the person taking the club's calls is ill equipped to handle an inquiry or, in some instances, is apparently disinterested or impatient or even aggressive. Sometimes there are access problems -- a referral number may be always answered by message machine with calls seldom being returned. *This is very poor PR for any breed club.*
Suggestions: • A puppy/breeder referral service that has several officers • A scripted questionnaire which, in a friendly manner, can help establish whether this breed is the right one for the caller • Fact sheets about the breed that are mailed out to all callers wanting a puppy • A list of upcoming shows where the breed can be seen and breeders met
- **Pre-purchase discussions:** Club lectures to give prospective buyers information relevant to whether or not to buy your breed. They need not be lengthy or extensive but should seek to address issues such as basic care, essential character and temperament for the breed, requirements for exercise/grooming etc.
- **Counselling service** offering support for buyers who are having difficulties

- **At shows:** Many new puppy owners complain that there is no help offered to the novice exhibitor; worse, some complain that they are made plain unwelcome.
Suggestions: • A club Hospitality officer • Pre-show presentation classes to teach grooming and handling techniques • A “buddy system” for new people to be assisted by an experienced club member in getting to know the show scene
- **At Obedience:** Go along to an Obedience club with a difficult dog and just see how you are treated!
Suggestions: • A club Hospitality officer • A feedback sheet to allow new members to offer their thoughts • A regular progress review to keep new members informed on their achievements
- Think about giving **limited free membership to new membership applicants** to earn their loyalty as you introduce them to your club and its activities
- Think about offering **free membership renewals to breeders** who sign up a specified number of new members in each club year
- **Puppy** picnics or Social days with competitions and games involving everyone; Field days involving fun activities such as flyball, lure coursing, earth trials etc
- **Petcare clinics** where pet owners can learn the very basics of coat, nail, ear and eye care
- **Rescue** and re-homing services
- **Breeders** forums & education sessions

Won't that all cost money?

Maybe. But let's not forget about **networking** and **outsourcing**.

With limited resources it sometimes becomes very difficult to achieve some of the objectives we'd like to set for ourselves. But if we form working relationships with other clubs, and with other people who have specialised talents, we can start to help each other.

Networking: Assess the talents you have within your own club and look to swap services with another club which has resources you need.

For example: Your club has a crack catering team but spends far too much on its printing bills. Look for a club which puts out great publications through its own resources, but is always on the lookout for externally provided lunches and teas at its shows, and organise an exchange of services with each other.

Outsourcing: Talk with like-minded organisations and see whether you can outsource a function to them during periods when your club is short on human resources.

For example: Your breed's group or semi-group club may be prepared to handle your club's puppy/breeder enquiry calls in return for a mutually agreed fee or an exchange of services.

Home Remedies

To Reduce
High
Creatinine
Levels



01

Chamomile Tea

1. Put 2 - 3 tsp of dried chamomile flowers in a cup of hot water.
2. Let it steep for 3 to 5 min.
3. Strain the tea & drink it.
4. Drink a few cups of chamomile tea daily.



02

Stinging Nettle

1. Add 2 to 3 tsp of dried nettle leaves to a cup of hot water.
2. Let it steep for 10 min.
3. Strain and drink it.
4. Drink this nettle tea once or twice daily.



03

Cinnamon

Cinnamon helps increase kidney output & promotes renal filtration ability. It also helps regulate blood sugar levels, thus preventing further renal damage.



04

Siberian Ginseng

It revitalizes the kidneys and promotes renal circulation. Do not confuse Siberian ginseng with other types of ginseng.

Top10
Home Remedies

To explore more, visit
www.Top10HomeRemedies.com



BlackHawk® **MasterBreeder**s

**PROGRAM NOW AVAILABLE
AUSTRALIA WIDE**

Sign up* now at masterbreeders.com.au

Our community receives:

- Minimum 20% off suggested retail price
- Exclusive offers and promotions
- Free delivery for orders over \$250
- Free puppy/kitten packs for litters

Proudly part of the
masterpet family

*Terms and conditions apply. Visit masterbreeders.com.au for more details.

© Black Hawk and other associated
trademarks are registered trademarks of
Masterpet Australia Pty Ltd.

masterbreeders.com.au

THE BULL TERRIER CLUB OF VICTORIA INC.