

# The Bull Terrier Club of Victoria Inc.

(Incorporated A0026517R)



March/April 2018  
Bully News



## **The Bull Terrier Club of Victoria Inc.**

### **Committee**

<b>President:</b>	Sherri Wakefield (interim)
<b>Vice President:</b>	
<b>Vice President:</b>	Les Greenall
<b>Treasurer:</b>	Jen Woodsell
<b>Secretary:</b>	Deborah Patterson
<b>Show Secretary:</b>	David Hirst

### **ALL CORRESPONDENCE AND ENQUIRY'S TO**

**Bull Terrier Club of Victoria Inc.**  
**Att: Secretary**  
**PO Box 1635**  
**Melton West VIC 3337**  
[www.bullterrierclubvic.com](http://www.bullterrierclubvic.com)  
[bullterrierclubvictoria@gmail.com](mailto:bullterrierclubvictoria@gmail.com)

### **Committee:**

Matthew Poplar (Catering)  
Jacqui Smith (Promo)  
Lisa Cantlon (Trophy Officer)  
Neil McCracken  
Kaye McCracken  
Tony DiFresco

### **LIFE MEMBERS:**

**VIN AND SHIRLEY HEALAND, ALISON SUTCLIFFE, LES GREENALL, CATHY SLUGA, WILMA RAWLINGS, DARYL MUNN, NORM JESSUP, NEIL MCCRACKEN**

---

Every care has been taken in the compilation of this magazine, but the Editor and the club assumes no responsibility for errors or omissions or any effects arising there from. Opinions expressed in these pages, whether in articles or advertisements are not necessarily the opinions held by The Bull Terrier Club of Victoria Inc.

# From the Secretary

Hi Members,

Firstly well done to the winners and competitors in Adelaide. I also congratulate the BTCSA committee for putting on such a superbly organised event.

It was extremely hot and having twilight shows was an absolute necessity I think. It also presented a fabulous opportunity to get out and about during the day and a few of us including our club mascot "Borrie" decided the Barossa was the best place for it! We loved Maggie Beer's farm shop so much we visited twice! Even if you don't show your dog, you should take a trip interstate to one of our fellow club shows and take the opportunity to show your support. The accommodation is dog friendly, and for the most part, you can always find ways to get your bully out and about with you.

The committee has been busy working on the upcoming May show (and November as well). We are putting a huge effort into sponsorships this year, both personal and Business. If you would like to sponsor one of our shows, please contact the club via email or give Tony a ring (0410863552) to see what is available. Your support of our shows is vital if we are to keep putting on exceptional events. The amount of work that goes into the running of a show is extraordinary and thankfully we have a large committee this year which helps! I hope to see everyone in May!

*Cheers Deb*





**Championship & Specialty Shows**  
**5<sup>th</sup> May 2018 - K.C.C. Park**  
**655 Westernport Highway Skye**  
**Entries close 17<sup>th</sup> April 2018**

**5<sup>th</sup> May Judge: Mrs. Patricia Whincop (QLD)**

**Championship Show**

**5<sup>th</sup> May Judge: Mr. Paul Haseldine (SA)**

**Speciality Show**

Championship Show to commence at 9.00am  
Specialty Show to commence not before 1-00pm

Enquiries to: Mr David Hirst, 03 5998 7493 **ALL entries to be ONLINE.**

No late entries will be accepted. Closing date 17<sup>th</sup> April 2018.

**Enter ONLINE at [www.showmanager.com.au](http://www.showmanager.com.au)**

All enquiries to the Show Secretary on 03 5998 7493 please no calls after 8pm.

<b>Members Entry for each show:</b>	<b>Non-Members entry for each show:</b>
Entry = \$20.00	Entries = \$24.00
Baby Puppy = \$10.00	Baby Puppy = \$10.00

\* Combined Catalogue: \$15.00 (includes both shows)

Classes to be judged in order: Dogs 1, 2, 3, 4, 5, 10, 11,  
Bitches 1A, 2A, 3A, 4A, 5A, 10A, 11A,

**Trophies and Sashes for all "In Show" awards.**

**R.O.M. Points available for both Champ. & Speciality shows**

*Please note **no** challenge points will be available at the Speciality show.*

*This Event will be held in accordance with VCA Regulations, Codes, Policies & Procedures (Effective 14 February 2013) Please note Rule - 7.5.25 No handler or exhibit shall enter the judging ring wearing or bearing any item which identifies by name, prefix, position or distinctive style an exhibit, exhibitor, breeder, sponsor or award; exhibit numbers excepted.*

*The Bull Terrier Club of Victoria Inc. reserves the right to refuse any entry.*

**BULL TERRIER CLUB OF VICTORIA Inc**  
**CHAMPIONSHIP SHOW SATURDAY 18<sup>TH</sup> NOVEMBER 2017**  
**JUDGE – MR STEVE WHEATLEY (BULTERZAR)**

**I would firstly like to thank the committee for inviting me to judge at their very prestigious and well run show today I thoroughly enjoyed my day, secondly a big thank you to all the exhibitors for allowing me the privilege to go over some very nice exhibits and taking my decisions in a very sporting manner. And finally a massive thank you to Leigh and Lance for making our time in Australia even more enjoyable, greatly appreciated.**

**DOGS**

**Class 1 Baby Puppy Dog**

**1<sup>st</sup> HELLOFABULL SECRET PROPHET**

White boy with good bone for his age, strong head with well placed ears, nice eye giving a lovely expression, nicely balanced youngster with good strong pasterns and tight feet, moved well for being so young with good rear quarters, holding his top line on the move.

**2<sup>nd</sup> SHIRVIN BRAVE HART**

Black/brindle boy with pleasing skull width and profile, another well balanced youngster with nice bone, good strong pasterns, lay back of shoulder could be slightly better, flowing body lines, good rear angulation, lost out today on rear movement which should improve with age.

**3<sup>RD</sup> CATCHALOT SHAME YOUR THE ONE**



**Class 2 Minor Puppy Dog**

**1<sup>st</sup> HELLOFABULL DEVILS BLISS (pictured)**

Solid silver brindle boy with a very good head all round with a lovely profile, filled right up with correct ear carriage and a good eye, good round bone with super straight pasterns and nice tight feet, lovely shoulders and straight front, well balanced flowing body lines with good rear quarters, moved well both ways and handled well. **RBD**

**2<sup>nd</sup> BULLPATCHY JOHNNY B GOODE**

White lad with a black ear, nice turned head but lacking a bit in fill but there's plenty time for that to come, front needs to tighten, a shade longer in back than the super short class winner, nice rear quarters, still just loose all round which you would expect from a big youngster.

**Class 3 Puppy Dog**

**1<sup>st</sup> SARAJENI MY LITTLE DEMON (AI)**

White with head marking, good profile to his head but his ear carriage could be better, slight mouth fault, lovely front with good shoulders and nice tight feet, has good rear quarters but tends to stretch out when standing which spoils his outline.

**2<sup>nd</sup> BULLPATCHY LOVE ME DO**

White boy with eye patch, pleasing skull with just enough profile, nice expression, nice bone and feet, his is a little short in upper arm which shows when he moves, good rear angulation with a well set on tail, rear movement a little loose at present.

**Class 4 Junior Dog**

**1<sup>st</sup> CH AZONAX WING COMMANDER**



White boy with brindle head markings, lovely well balanced body though out with good round bone, strong filled up skull with great expression, ramrod straight front with good tight feet, well developed rear quarters with just enough turn of stifle, good tail carriage, moved well in front but a little close behind.

2<sup>nd</sup> BULLROY RIPCORN

White with slightest of miss mark, super profile to his head, ears bang on top, lovely eye giving a stunning expression, good straight front, strong pasterns with tight feet, good length of leg, nice body shape just needs to tighten which will come with age, very good rear movement, still a little loose in front.

#### Class 5 Intermediate Dog

1<sup>st</sup> BALGAY DEVIL IN DISGUISE

Huge heavyweight white with brindle ear, maximum bone and substance with good tight feet, powerful packed head, slight mouth fault, super straight front with good shoulders, good body shape just enough turn of stifle, moved well both ways with a well set on tail to complete the picture.

2<sup>nd</sup> JACAMAR FURY ROAD

Smart looking red lad with good profile and strength to his head, lovely straight front but a little short in foreleg giving the impression he is long in the back , he has a super rib cage, moved parallel but lacking drive, a very handsome boy never the less.

3<sup>rd</sup> STARDOM EYE SPY

4<sup>th</sup> ALSUENO BROOKERS BOY

#### Class 10 Australian Bred Dog

1<sup>st</sup> SUP CH SATORI MAGIC MIKE

Big heavy weight well marked mahogany brindle, power packed head with good length and filled right up, well placed eye and ears giving a cracking expression, super round bone, lovely straight front standing on good tight feet, well bodied boy with great spring of rib, well angulated rear quarters, moved well both ways, to be hyper critical i prefer my dogs a shade shorter but that said he is still a stallion of a dog and his more that capable handler showed him off well today.

2<sup>nd</sup> YANDOMIR KAUZIN KAOS

White lad with black head markings, cobby type dog with a strong but shorter skull than class winner, nice clean bone with good strong pasterns and nice tight feet, his shoulders could be better which shows more on the move, lovely short back with just enough turn of stifle, showed well.



#### Class 11 Open Dog

1<sup>st</sup> CH STARDOM DEMONS DISCIPLE [\(Pictured\)](#)

White boy with red ear, loved this boys overall balance soon as he entered the ring, super construction from front to back, head fits the standard exactly with good turn, length and fill, lovely eye and ear placement, ramrod front with good pasterns and feet, lovely short back and super rear quarters with a well set on tail, moved parallel both ways, never stopped showing, a pleasure to award him **BIS** today

2<sup>nd</sup> CH WAKATANG RIVER BOY

Brindle lad, well up on the leg, good length of skull but would have liked a little more depth, nice ear placement and eye, nice body lines with good depth of brisket, a shade long cast in back, leading to a well set on tail, just enough turn of stifle, stood fore square, moves parallel but would have liked to see a bit more drive.

## **BITCHES**

### Class 1a Baby Puppy Bitch

1<sup>st</sup> HELLOFABULL ATOMIC BLONDE

White girl with lovely balance for a youngster with great bone too, won the class on her overall construction which should only improve with age, a one to watch, very smart young lady.

2<sup>nd</sup> SHIRVIN BELLA DONNA

Bl/brindle girl, another very promising pup more up on the leg than class winner, nice bone and flowing body lines, good rear quarters, lost out today on overall substance which will come with age.

### Class 2a Minor Puppy Bitch

1<sup>st</sup> BULLROY BUDDIE CRAZY

A lovely well balanced white girl, good length of head with a lovely eye, liked her overall make and shape, nice bone, her front is still a little loose but her rear quarters are excellent for such a young girl, another future star in the making.

### Class 3a Puppy Bitch

1<sup>st</sup> SIRRAM MAGIC EYE ATLURKER

White with Bl/brindle, head marking, real strong headed girl but would have liked more length, super front with lovely shoulders and a very good fore chest for a youngster, good bone, lovely flowing body lines, in very good condition, just enough rear angulation, moved well both ways and very well handled, (don't take her out in the rain lol)

### Class 4a Junior Bitch

1<sup>st</sup> BULLPATCHY GLAMOUR PUSS

White girl with Bl/brindle head marking, another well balanced young lady, nice skull all round with a pleasing expression, nice round bone, straight front, good top line with lovely rear quarters, moved parallel but not really enjoying herself today.

### Class 5a Intermediate Bitch

1<sup>st</sup> BRAXSTAR HARLEM BACK GIRL (Pictured)

White girl, my notes started with (WOW) this girl is stunning from nose to tail, super head filled, turned and good length, lovely front super short in back, held her lovely top line on the move, super rear quarters, never stopped showing, yes her mouth is wrong but who cares when she looks this good, a pleasure to award her **BOB**

2<sup>nd</sup> CATCHALOT BIG EYE

White girl with a pleasing head, lovely expression from her correct eye and ear placement, good straight front with good pasterns, nice shapely body, more up on the leg than class winner, good rear quarters but moved a little close behind, showed well.

3<sup>rd</sup> YANDOMIR SWEET COMMOTION

4<sup>th</sup> HELLOFABULL DAN SIN QUEEN



#### Class 10a Australian Bred Bitch

1<sup>st</sup> BULLPATCHY MISS CASSIDY

Cobby type white girl with good length to her pretty head, nice expression, lovely straight front with nice tight feet, flowing body lines with good substance, decent rear quarters, moved ok.

2<sup>nd</sup> POTENS SUNSPEAR

Brindle girl, terrier type, well up on the leg, nice girl all round, straight front, tight feet, pleasing body lines, good rear angulation, just needs to mature, promising young lady.

#### Class 11a Open Bitch

1<sup>st</sup> POTENS DARK WINGS (**Pictured**)

Terrier type Bl/brindle girl, good length, turn and filled head with a nice eye for a coloured, lovely straight front, good shape to her body with very good rear quarters, moved well both ways, will only improve with age, would love to see her again in 12 months time, well handled. **RBB**

2<sup>nd</sup> YANDOMIR SILENT ASSASSIN

White girl with brindle head marking, more compact than class winner, good length of head but would like a little more strength in foreface, good straight front and bone, good rear quarters, could forgive her undercarriage as she has a baby at home 10 weeks old, a credit to her owner, would love to see her in peak condition, well handled.



#### Class 18a Neuter Bitch

1<sup>st</sup> CH WAKATANG AMERICAN DREAM

White 7 year old girl with head marking, in super condition, lovely pleasing skull with good expression and lovely ear placement, good angulation front and rear, showed and handled well today.

2<sup>nd</sup> SEMAJON SHEZ A DREAM

More upstanding girl than class winner, nice make and shape with good bone, straight front, good feet, lovely top line and tail carriage, just lacked that bit sparkle today.



**THANKS TO OUR SPONSOR “BLACK HAWK”**



# **Note to Members and Breeders:**

The Bull Terrier Club have DNA swab kits available for all breeders or owners of Pedigree bull terriers wishing to submit DNA samples from their animals to Animal Health Trust. The sample kits include a contact details form and five DNA swabs. A copy of pedigree and any health information is required with DNA submission. Kits may be taken home for completion and posting back to the UK. It is relatively cheap to post the kits and as the samples are stable once taken, they can be sent by general mail. We can also post them out to any breeders interested in providing this valuable DNA to researchers who have the best interests of our breed at heart.



## **ACT BULL TERRIER CLUB Inc.**

**CHAMPIONSHIP SHOWS – SATURDAY 17 Nov 18  
CHAMPIONSHIP SHOW - SUNDAY 18 Nov 18**

**Dog Rings - EPIC Grounds, Federal Highway, Canberra**

**Judges: Saturday Show 1 – Mrs J Johnson (UK)  
Saturday Show 2– Ms D Cuthbert (SA)  
Sunday – Mr R Lamonby (UK)**

**Classes to be judged:**

**Sat Shows 1 & 2 - Bull Terriers (Min) & Bull Terriers – 1,2,3,4,5,10,11 Dogs/  
Bitches and General Specials**

**Sun - Bull Terriers & Bull Terriers (Min) - 1,2,3,4,5,10,11 Dogs/Bitches and  
General Specials**

**Judging Commences: 0900 AM each day, 2<sup>nd</sup> Sat show commences  
1 hour after completion of first show**

**Entry Fee: Baby Puppies \$15, all other classes \$25-00**

**Catalogue: \$15-00 to be prepaid with entry. Catalogue is for all shows.**

**Entries Close 25 Oct 18 with: Mrs D Cross  
PO Box 7474  
SUTTON 2620 NSW**

**NOTES:** 1. All remittances to be made payable to: ACT Bull Terrier Club  
2. No late or phone entries will be accepted  
3. Numbers will be available on the day, they will not be sent out





## BTCV Championship & Specialty Shows Trophy & Sash Sponsorships



**Championship 5<sup>th</sup> May 2018**

**Judge: Mrs. Patricia Whincop (QLD)**

Championship Show	Trophy \$20	Sash \$15
Best In Show	SARAJENI KENNELS	SARAJENI KENNELS
Runner Up Best In Show		
Challenge Dog		
Reserve Challenge Dog		
Challenge Bitch	KAREN GRIFFITHS & KIM GREG	KAREN GRIFFITHS & KIM GREG
Reserve Challenge Bitch		
Baby Puppy In Show	WOODSELL & POPLAR	
Minor Puppy In Show	WOODSELL & POPLAR	
Puppy In Show		ANNE PROBESTING
Junior In Show	DELESTRO KENNELS	DELESTRO KENNELS
Intermediate In Show		
Australian Bred In Show		
Open In Show		

**Specialty 5<sup>th</sup> May 2018**

**Judge: Mr. Paul Haseldine (SA)**

Specialty Show	BUSINESS PACKAGES AVAILABLE *	
Best In Show	SIRES ON ICE	
Runner Up Best In Show		
Best Dog		
Reserve Best Dog		
Best Bitch		
Reserve Best Bitch		
Baby Puppy In Show		
Minor Puppy In Show	TRUE ADDICTION TATTOO	
Puppy In Show		
Junior In Show		
Intermediate In Show		
Australian Bred In Show		
Open In Show		

Please email the club at [bullterrierclubvictoria@gmail.com](mailto:bullterrierclubvictoria@gmail.com) if you would like to sponsor.

Or phone Tony DiFresco on 0410863552.

Payment to be made via EFT Name: Bull Terrier Club of Victoria Inc

BSB: 633 108 Acc: 125398453. [Sponsorship registration & payment closes 31<sup>st</sup> March 2018](#)

\*Business Packages include Acknowledgement Rosette, and advertising in Catalogue/Newsletter and Website.

Please phone Tony for further details or email club and we will call you back. Sponsors must supply logo and/or advertisement.



**BlackHawk**

Every ingredient matters

All Australian.  
Zero grains.  
Zero fillers.

Black Hawk's simple guiding principle is that every single ingredient matters. That's why we use only the highest quality Australian sourced meats, freshest vegetables and juiciest fruits.

We are committed to nothing artificial, nothing fake, nothing but 100% real goodness. Every ingredient matters™

Join our breeder community today.

**NEW**  
grain free

Available  
in 15, 7 and  
2.5kg bags



Proudly part of the  
masterPet® family

 [blackhawkpetcare.com.au](http://blackhawkpetcare.com.au)  [/blackhawkpetcare](https://www.facebook.com/blackhawkpetcare)

© Registered Trademark © Masterpet Corporation Ltd



## Why allrounders rarely see a good Bull Terrier

by JOHN JAMIESON

FOR A number of years Bull Terriers in our country have experienced quite wide popularity though, more importantly, a tremendous advance in breed progress.

It is important to explore the reasons behind this progress as I believe the same reasons could be applied to most other breeds, though I admit to little knowledge of other breeds.

I find that most non-specialist judges approach our breed primarily from 'learning the Standard'. This is without question the start of the problem. The real secret behind more correct judging of our breed, or any other I am sure, has nothing whatever to do with the breed Standard.

A very clear manner in which judges can more correctly understand our breed is explained quite well in the Book of Matthew when Christ delivered the Sermon on the Mount. He went to great length to detail that the whole understanding of the law was totally wrong. While the 'letter of the law' (the breed Standard) set out exactly what the law actually was, it was the 'spirit of the law' (the reason for the existence of the breed) that was all important. By interpreting the law by the letter, the whole meaning and reason for it was lost and well wide of the mark.

### Paramount influence

It is far better to throw the Standard out of the window and explore the function for what our breed was designed and 'manufactured' — even though that function is no longer used, its influence on what our breed should be like in form and temperament is paramount.

Our breed was not only designed to fight all other canines, but most importantly to win. Obviously what we are after is a Cassius Clay, the most devastating fighter of our time: peak fitness with powerful, correct physical construction and possessing a mental attitude to demoralise and destroy an opponent.

In recent years, one may have observed the tremendous support given to our breed specialist judges and the almost total lack of support given to the allrounder by our serious breeders and exhibitors. There is good reason for this. Let us take the example of the show record of a recent, well known and now quite important dog in our breed.

Firstly in the morning session, in very gloomy weather, the allrounders, after having lost the toss, were sent in to bat. Let us see how they fare with this now important dog. March '81, fourth in class (under one of our so-called terrier specialists); May '81, second in class; June '81, first in class (no further), and second in class; August '81, reserve challenge. The stunned crowd struggles to the bar for relief at the lunch break.

### Globally respected

After lunch, in bright sunlight, we see the breed specialists open their innings. I name the judges as they are representative of the most respected breed judges both here and overseas. April '81, best baby under Mrs Q Youatt (UK); September '81, BIS — Mr A Miller (UK); November '81, challenge — Mrs M Bell (UK); April '82, BIS — Mrs H Glassby (UK); September '82, BIS — Mr A Reading (SA); March '83, intermediate in show — Mrs J Kenway (UK), and BIS — Mrs E Douglas Lindsay (UK); September '83, BIS — Mr R Scott (UK), and BIS — Mr D Beioley (Qld); March '84, BIS — Mr D Beioley (Qld); April '84, BIS — Mr R Goetz (Vic), and runner up in show — Mrs E Micklethwaite (UK).

Quite a different story and very easy to see why the owner of such a valuable dog saw that each of the allrounders was 'retired hurt' at the end of the day's play. Who could blame her? Most of his wins under specialists were also at breed specialties against the top dogs in the country. The losses under the allrounders were to dogs now of little or no significance in our breed.

There has to be a reason for this almost shameful judging of this dog. The judges themselves, if they have any sense of responsibility, should be looking for it. Maybe it was a few tick marks on the coat of this dog that gave the allrounders an excuse to put him down to dogs of far lesser quality, or maybe the fact that the dog was so outstanding that he didn't look like the others and they could not identify this level of quality when faced with it. Whatever the reason the allrounders, to a man, were way off mark and deserve the record with which they now have to live.

In looking for a reason behind this apparent lack of understanding I have to look no further than the comments made from the floor by a well known allrounder during a breed information night. We will come back to this a little later.

Our breed has progressed in the past and will do so in the future with our more intelligent and skilful breeders using dogs and bitches who carry what we term as 'superficial faults'. Let us get back to the real function of the Bull Terrier and put some of the faults back into their correct perspective. The dog mentioned above carried some tick marks in his undercoat. They can be groomed out. The Bull Terrier is solely a 'fighting machine' and the tick marks in his coat have no bearing whatever in detracting from his fighting qualities.

### What they missed

One of the great and most notable dogs in our breed in the past, due to unfortunate treatment while young, had an ear that was not erect. It always puzzled the new owner when 'knowledgeable' people, judges included, upon first seeing the dog, would comment: "Oh, what a pity about his ear." They missed about the best shoulder, shortest back, best constructed rear, dead straight front and the best feet on any dog of his time. He was also one of the best movers of all time in our breed. They missed all these virtues and could only see that his ear was not upright. Please may we be protected from these people.

Many years ago I asked one of our best known breeders the importance of ears in a Bull Terrier. His answer was: "In the old days they used to cut them off as they generally got in the way." That is the importance of ears to the function of the Bull Terrier. They must be assessed accordingly.

I also find that mouths that are slightly incorrect are treated almost as a disqualification by some judges, and I exclude an incorrectly made jaw from this comment. Once again, this must be put into the correct perspective. The Bulldog does not seem to suffer in biting and holding ability with his mouth construction. Should a Bull Terrier latch on to me, and I were given the choice whether I would prefer a dog with a correct mouth or a slightly incorrect one, I would still choose neither. This is again only one fault to fix and if the dog is very good elsewhere, then this must again be assessed accordingly.

Almost all the great dogs of our breed have carried some of these superficial faults. When used intelligently they have not, as a rule, passed them on. What they did pass on was their tremendous virtues. As a result we have enjoyed our great breed progress. Should our past breeders have ignored these dogs our breed would still be up with the 1930s.

Coming back now to our allrounder at the in-

formation night. An attempt to put these superficial faults into correct perspective and related to the whole of the dog, the comment was: "But the Standard says... but the Standard says... but the Standard says..." Not an inch given and totally blinded to seeing only a mark behind the collar.

From this attitude, we can assume that this judge suggests that the dog must be no good and go down to another possibly having an upright shoulder, down on pasterns, straight stifles, poor head (correct mouth of course) and no bone or substance but having nice, well placed ears and a beautiful, unblemished, shining white coat. A mark behind the collar is only one fault and rarely reappears in the offspring. The other dog in this case would have hundreds of faults taking many years of intelligent breeding to correct. Commonsense indicates that a mark behind the collar in this case would only become a factor when you had another there equally as good, but not having this minor fault. We have seen it all so often, no wonder any serious exhibitor with an outstanding dog will avoid this type of judging.

### Positive approach

All judges must work back from the most positive virtues relating to the function of the dog and to the degree of importance to the value of these virtues. To relate a point, those of us who have had the unfortunate experience of separating two Bull Terriers know only too well that the first thing you do is to lift his hind legs off the ground. A very easy way to evaluate the importance of a well developed and powerful rear end. It is also no good for the dog to have a powerful rear end if at the business end his head lacks the strength, so vitally important to the function of the dog. A few tick marks on his coat pale into insignificance when one considers the business for which he was initially designed and these virtues must be evaluated in this way.

When one approaches the ideal dog from this direction, the function of the dog, and work back, you will end up with the same Standard exactly, but you will have arrived at it in the correct way and also have the 'spirit of the Standard' in its correct sense.

Unless there is some change, the situation as it stands will continue — with our serious exhibitors going to their usual few shows per year under specialists, regardless of the mileage involved, and ignoring the shows where the opinion of the judge is in their view lesser value. This means that too few of the top quality dogs are exhibited regularly. As a consequence the allrounders and non-specialist judges have little or no opportunity to see the better dogs in numbers and 'get their eye in'.

### One way round

As a good example of what can happen, two recent shows in Coffs Harbour (hardly just around the corner), judged by breed specialists, attracted a goodly number of dogs with challenge line-ups equal to any at our specialties. Top quality specimens of the breed went through to the group judges — and were justly rewarded!

In conclusion, I cannot offer any solution to the existing situation other than for allrounders to approach our breed from the angle as detailed above. It is their responsibility to put in the effort to understand the breed if they want the support of breed enthusiasts.

## National Dog

Send \$35 today for 11 monthly issues, plus the big Annual edition in January, to:  
The National Dog  
PO Box 186, Windsor, 2756



# Facing an exciting future

A GREAT deal of change has occurred with the Bull Terrier in Australia over the past five years. The breed has received interest from the public at large. Registrations are up at least 25% compared to the 1981 figures. Whether this is good for the breed is debatable. Certainly if one was to rely on the law of averages, larger numbers of animals registered should lead to a higher proportion of quality stock.

The Bull Terrier is now represented with great enthusiasm through five separate breed clubs registered to award challenge certificates. These are Melbourne, Adelaide, Brisbane, Perth and Sydney. A fast growing social club exists in Tasmania. I feel sure it will be close to registration in the not too distant future. The most recently formed breed club is still in its infancy as a provisional organisation under the guidance of the RASKC. I refer to the Newcastle Club.

## The stage is set

On the eve of forming a National body, enthusiasm is growing as Bull Terrier breeders in this country face a mature future.

The Recognition of Merit certificate, based on breeder judged shows, has set the stage for honouring great dogs and bitches previously lost in the fast breeding programmes of our modern dog lifestyle.

The Trophy Show, held as an unofficial National event every two years, will be held in Perth this year, on 15th November, and as is policy will be sponsored by the Bull Terrier club of the host State, the Bull Terrier Club of WA. An ex officio meeting takes place at all Trophy Shows to make decisions on where the next show will be held. This year there will be a more formal atmosphere when delegates from all State clubs will discuss the forming of a National body.

Contrary to some beliefs, the forming of a National Council for Bull Terriers will give a great deal more perspective and joint integration for all Bull Terrier owners and breeders. With more co-operation between States, Bull Terriers in this country may well be on the pinnacle of great success with advances for the breed.

There is great intelligence among breeders in all States. With the ingredients of unselfishness, co-operation and good old fashioned competition, we have the world at our feet.

In NSW the Bull Terrier Club embarked on two

## THE BULL TERRIER BREED LOOKS FORWARD TO NATIONAL UNITY

by STEVE ISAACS

ambitious programmes for 1986-87: a Recognition of Merit (ROM) award, and the publication of a book for Bull Terriers in Australia.

The ROM certificate has been an outstanding success. All noted and successful breeders from every State have realised its great worth. It's just another championship certificate, some may argue, but no, it's far more competitive than champion status, for this certificate can only be earned by attending breed specialist shows.

For those not familiar with the award, this is

how it works. A dog or bitch must accrue seven points. Of these, at least one three point award, ie challenge certificate, must be won at a Bull Terrier Club show. Points can be gained in the following manner: BTC championship shows all States — CC, 3 points; BTC sanction shows — best dog or bitch, 3 points; BTC championship shows all States — reserve CC, 2 points; BTC sanction shows — runner up best dog or bitch, 2 points; any breeder judge club supported championship show — CC, 2 points; any breeder judge club supported championship show — reserve CC, 1 point. The ROM Certificate has been backdated to the start of 1970.

Deposits to advertise and contributions are slowly filling the pages for the first Australian Bull Terrier Book. It is due to be released in time for the Bicentennial celebrations 1988.

## THE FEW BECOMES 500

by PRIOR OLDREDGE

IT WAS in 1976 that the Bull Terrier Club of Victoria was founded by a few keen fanciers of the breed. At this time it was still uncommon although more people were taking an interest and the trickle of newcomers slowly increased until now it is one of the strongest breeds in the terrier group. The club has about 500 members.

Bull Terriers have not only increased in numbers, they have also improved in quality thanks to the importation of several dogs and bitches. Greatest influence in Victoria was Bargham Nero of Hollyfir.

I believe the club can take some credit for the breed's popularity as it has some magnificent trophies donated by members and conducts competition for these at selected championship shows during the year, which helps to bring the dogs out into the show ring.

We conduct one open parade and one championship show per year. Entries have steadily increased. The championship show this year drew in excess of 200 dogs and with double entries and special classes the total was over 260.

Members' competitions are run approximately every two months. They draw entries of about 60. There is a training day for judges who are

registered as aspiring judges with the Victorian KCC as they have more of a breed than they would at an all breeds open parade. The day is treated as a fun occasion with barbecue lunch. It is held at a recreational park.

This is also an excellent time for new members with puppies to start showing as in the morning we have an experienced handler, often from other breeds, to conduct a class on show ringcraft. I am sure this shows up in the showing as the handling of Bull Terriers has improved markedly over the years.

## Making light of isolation

by JAMIE WATKISS

THE BULL Terrier Club of Western Australia (Inc) is probably the most remotely situated bully club in the world but our progress has not suffered in the least because of this fact.

From our informal inaugural meeting in 1973 we have followed the familiar path of new bully clubs through visits to UK by members, at least 15 UK imported bullies, unsanctioned informal shows, the battle for affiliation, financial progress, bouts of dissension and harmony, waxing and waning of enthusiasm, breed progress, bitches regularly travelling 2,000-3,000kms for matings, purchase of interstate blood.

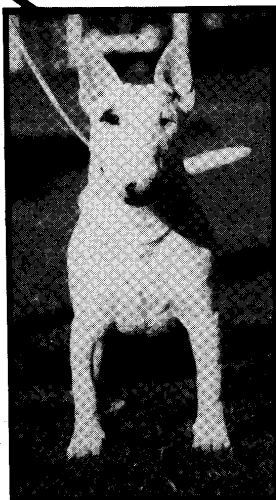
Strong representation at the Trophy Shows, with WA bullies always being in the money, has forged bonds with devotees throughout the world we are to host the 1987 Trophy Show.

The club has developed a super stock of retail bully artefacts and has always produced a newsletter. We are proud of our publication, 'The Bull Terrier in WA'. Written in layman's terms as a guide for the novice, this book has been acclaimed worldwide and sells constantly.

The club has of late had a committee of persons who show very seldom and as a result it runs so smoothly it borders on being boring. This is in contrast to the unfortunate situation in some clubs where ribbon hunting conquers commonsense. Visiting judges and bully personalities have commented favourably on our organisation, our industry and the quality of WA bullies. Our newsletter reaches in excess of 250 readers worldwide and circulation is increasing.

The present strong position of bullies in WA is a direct result of a small nucleus of unshakeable diehards who have weathered all the storms and put the breed before self-gratification. These fine members know who they are and the breed is in their debt.

'The force is with us'.



## Alckyra & Shasnar

INTRODUCES

## BRAHMA PARK FIERY FRANK

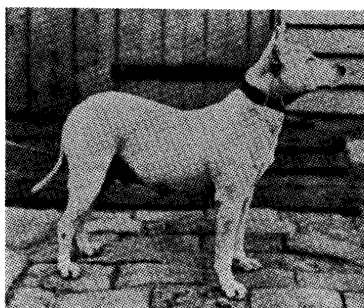
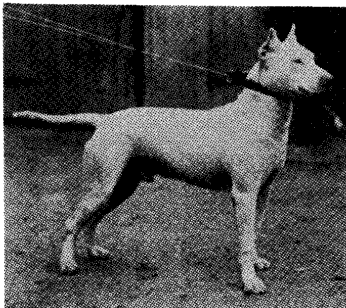
(at 7 months)

by Ch Castig Casanova  
ex Brahma Park Fancy Fran

bred by S Anslow  
owned by C O'Brien & F Edwards

Stud and Puppy enquiries  
welcome

Phone: (02) 606 1120



19th Century stars, from left: North Stockton Wonder, Monkland Belle and Ch Monkstown Peer.

## The Bull Terrier — a product of tougher times

CIVILISATION as we know it today could never have given us that gladiator of the canine race, the Bull Terrier. He is the product of tougher times when bull baiting and the like were commonplace; when sporting dogs earned either their keep or a bullet.

Early in the 1800s they were called 'Bull and Terriers' but they were still a long way from the breed we know today. Small wonder when one remembers this is what James Hinks Jnr said of his father's brainchild: "The forebears of my father's dogs presented a comical appearance with their short thick heads, blunt muzzles showing a certain amount of Bulldog layback, bow legs, thick-set bodies and overhanging lips, whilst in colour they varied between black and tan, brindle, red, fallow, etc."

Other breeds were introduced, notably the Dalmatian and White English Terrier, and the results were not always well received. Robert Leighton, writing in Cassel's 'Book of the Dog', told how "These Birmingham dogs showed a refinement and grace, and an absence of the crooked legs and coloured patches which betrayed that Hinks had been using an outcross with a White English Terrier."

"Many persons objected that with the introduction of new blood he had eliminated the pugnacity that had been one of the most valuable attributes of the breed. But the charge was not justified, and to prove that his strain had lost none of its cherished quality of belligerence, Hinks matched his 40 pound bitch, Puss, against one of the old Bull faced type (a 60 pound bitch) for a five pound note and a case of champagne. The fight took place at Tuffers in Longacre and in half an hour Puss had killed her opponent. Her own injuries were so slight that she was able to appear the next morning at a dog show and take a prize for her good looks and condition."

Third generation of the Hinks family to be interested in the breed, Carleton, grandson of the original James, remembered how his grandfather, "After many trials and tribulations, took to very close breeding, father to daughter, mother to son, the cry being to save the puppy with the most white."

This glimpse — and that's all it is — into the breed's past is well known to the cognoscenti. But it's interesting to look back on its early days in Australia. Walter Beilby records the Bull Terrier's early days in this country in his book, 'The Dog in Australia', (1897): "The up-to-date bull terrier was first introduced into Victoria by 'Plunger' Benzon, an English gentleman, who created a sensation in racing circles about 1885 and 1886. Mr T Gurney, whose name is still well to the fore in sporting circles, and who has owned many good, game dogs, exhibited Ben, who was of obscure parentage and belonged to the heavy-weight division. He was a very fair all round white dog, with a longer head, more bone, coat, and better legs and feet than anything seen up to his introduction; in fact, nothing like him in

### A NATIONAL DOG SPECIAL FEATURE

any respect had appeared up to that time (1886). I well remember the excitement at the National show (later Royal) when Mr R G Banner very properly awarded him first prize.

"The next sensation was the appearance of Messrs Douglas and Hepworth's (Sydney) pair, Trentham Count and Lady, afterwards registered as Smithfield Lady. This illustrious pair fairly revolutionised the breed in all parts of Australasia, and through their agency many of the recent importations have appeared, as fanciers became so taken with the new style that they had to import to get new blood.



The uncropped Banker

"A most extraordinary scene occurred through the above pair, which I can safely say has never been equalled in the history of dog shows. This disgraceful affair took place at the Melbourne show in 1886, when the new comers were very properly awarded premier honours by Mr J C Coupe. Being such entirely different animals from the others present, a howl of dissatisfaction arose from a party of disappointed exhibitors. A consultation followed, several of the hitherto leading exhibitors taking a prominent part. The doors were forcibly opened, and the offended exhibitors and their dogs marched out of the building. As may be imagined, several life disqualifications followed.

"Up to this time the nearest approach to the imported dogs was Mr A Gaisford's Silvia — a New Zealand bred dog whose ancestors I do not know anything about — who sired Mr J Marshall's Twister, a white dog that became a champion, and sired several fair dogs, amongst them Ashton Rex. The last-mentioned dog was the first I remember being exhibited by Mr S Floyd, and if the dog did not make a name as a sire, he was mainly instrumental in giving his owner a great deal of enthusiasm by landing the sweets of victory at the first time of asking. This, no doubt, had a great influence in inspiring Mr

Floyd with further ambition, which resulted in several importations, the pick of the lot, undoubtedly, being Queen of the South. The bitch herself belonged to the light-weight division, and was undoubtedly the best of her class seen in Victoria, where she holds an unbeaten record. Balfour, a dog by Lord Random, and the bitch Coromandel, by Regent, were also imported by Mr Floyd, and have each won on several occasions.

"In this breed New South Wales holds a distinct lead. A good foundation was laid, as already stated, by Messrs Douglas and Hepworth's importations. Later Monowai, an English-bred dog that did some duty in New Zealand, was added to Mr W Miller's strong team, and he soon made his presence felt. The dog is now owned by Mr J Marshall, of Melbourne. Mrs M Povah's Madame Gully is another of the New South Wales division. She is the dam of North Stockton Philgarlic and Monkland Wonder, two excellent specimens that have done so well for Messrs Campbell and Miller. Mr T K Steanes (Sydney) has also added to the imported list Sweet Maggie, by Duke of Clarence, and Sampson II, by Ben out of Zulu, a heavy-boned dog that would have been useful had he lived.

"In New Zealand the breed has not gone ahead quite so fast, nor in South Australia, but in Brisbane some excellent animals are to be found — Mr R A Grant's Monkstown Peer, in particular. I had the pleasure of judging this dog at the Kennel Club show, New South Wales, in April, 1895, and had considerable difficulty in dividing him and Monkland Duke (Monowai and Mararoa) for the premiership. It will be seen by the above that the rapid improvement up to now is not to be wondered at, and any beginners possessing plenty of patience have a good foundation easily available to them.

"Mr Grant's Monkstown Baroness, by Monkstown Gripper, took third in the best class of bull terriers I have ever seen. The Brisbane enthusiast purchased Monkland Duke after the show, and at the present time owns a remarkably strong kennel of this breed.

"Messrs Pye and Barton have been very successful breeders and exhibitors for some time past. Their Monkland Belle is an exceptionally good bitch. Messrs F Smith, J Dean, W Dyson, in addition to those named, own some very good dogs, and are prominent prize-takers in New South Wales.

"Messrs S Floyd, S Atherton, J Marshall, and P S Lang own the best Victorian stock. Mr C G Hamilton has lately taken up this breed. Mr Hamilton's dog is by Trentham Count out of Monkland Belle."

These, then, were the beginnings of the breed in its native Great Britain and in what was then the most far-flung part of the British Empire. On the pages that follow we leave you to judge the changes — improvements? — for yourselves. ●



## Forget the myths — bullies can be trained

says ROBYN YATES

MY REASON for wanting to promote obedience training in the Bull Terrier breed is to try to educate the public that the breed is not necessarily the ferocious fighting animal that they believe, a myth created, like many other myths, by humans.

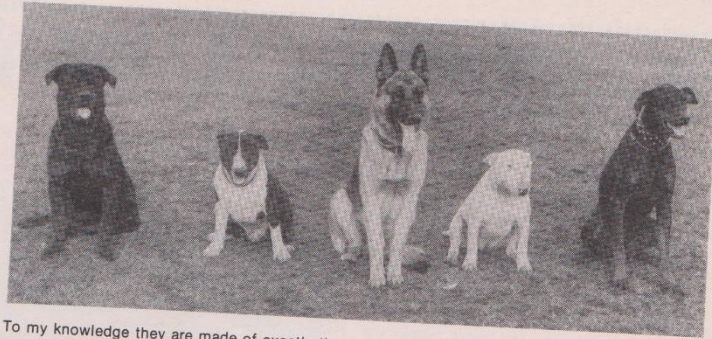
Perfect examples of myths associated with Bull Terriers are, and I quote from some statements made to me by some of our members when they first join the club:

*Bull Terriers can't be taught obedience because of their strong, determined nature and they are thick headed.* WRONG. If he/she is taught at an early age, before the dog gets too strong for the handler, and the dog is treated kindly, you will find a special bond will develop between handler and the dog and the dog will be eager to please its owner.

*If the dog is taught obedience it will be no good for breed showing.* WRONG. In obedience the dog is taught to stand on command, which makes it easier to set your dog up for the judging line up.

One of the main myths that I have overheard people say concerning the bully is: *Dogs must show aggression in the show ring.* WRONG. To say that a dog has stamina or a fiery stance doesn't mean that it has to be taught to attack the next dog in a line-up. It simply means that the dog stands looking alert, being well muscled and showing stamina as any sporting terrier breed should.

*I have had owners tell me that their dogs have such strong hides that you could hit them with a piece of 3 x 2 and they won't even feel it.* WRONG. They feel pain just like any other dog.



To my knowledge they are made of exactly the same construction, eg flesh, blood, bones, organs etc.

I feel that it is my duty, as an instructor, to correct any myths that are either overhead or just said to me about the breed.

People have said that you can't put a Bull Terrier in a sit or down stay position in a line up with any other breed of dog as they will attack the other dogs. WRONG. If a Bull Terrier is taught to accept and associate with other breeds early in life, they don't know that they are different. But if a Bull Terrier is kept in a kennel situation and is never taken out among other breeds, of course they will act sometimes with aggression when they meet another breed, as they themselves don't know what to expect from the other dog.

There are several reasons for obedience training the Bull Terrier:

1. To promote the breed and present the animal to the public in the best possible way, which will enable them to see for themselves the best side of the animal;
2. To socialise the dog with other people and other breeds of dog;

3. To teach the dog stand on command/examination, which gets it used to other people handling it as will happen whether showing or just being taken out among the public;

4. They are taught to heel on a loose lead so that it is easier to walk them; to remain in a stay position, even with distractions around them, such as children and other dogs; and to come immediately when called.

The handlers are also taught to solve various problems that they are having with their dogs. This covers everything from naughtiness, diet, breed problems or just understanding the pup. (These questions may seem quite simple to us, but they may not be simple to the person who has just acquired a new puppy).

Humans have in the past created a bad name for the Bull Terrier, for example by skiting about how aggressive their dogs are, and by putting Bull Terriers in the ring to fight each other for gambling purposes.

Let us in the future show the public what a lovely animal and friend the Bull Terrier is. We can do this by showing them that a well trained, sociable dog truly is 'Man's best friend'.

## \$\$\$ BTCV Financials \$\$\$

### Statement of revenue August 2017

Balance as at: 1.8.17 \$9607.22

Revenue: \$500.00 (Entry fees C Cook \$20.00, Canterbury BTC judges fee \$400, \$Memberships \$80.00)

Expenditure: \$73.95 (\$23.95 Treasurer supplies, AANKC Judge contract – McCann \$50.00)

Balance as at: 1.9.17 \$10,066.27

### Statement of revenue September 2017

Balance as at: 1.9.17 \$10,066.27

Revenue: \$137.50 (Memberships \$137.50)

Expenditure: \$26.00 (\$26 Meeting Room Hire)

Balance as at: 1.10.17 \$10,177.77

### Statement of revenue October 2017

Balance as at: 1.10.17 \$10,177.77

Revenue: \$275 (\$75 Memberships, \$200 Raffle)

Expenditure: \$5421.65 (\$125.50 raffle ticket printing, \$58.10 trailer rego, \$333 VCA affiliation fee, \$75

November show entries, \$72 Expo Printing, \$531.05 Computer sashes for November shows, \$3000

Judges fees, \$1200 judge accommodation and expenses, \$26 VCA room hire)

Balance as at: 1.11.17 \$5031.12

### Statement of revenue November 2017

Balance as at: 1.11.17 \$5031.12

Revenue: \$5181.50 (\$755 Raffle, \$580 Nov show sash and trophy sponsorship, \$2580 Nov show entries, \$12 Promo sale, \$50 Nov show catalogue sales on day, \$400 Rebanked petty cash & floats Nov shows, \$365 Nov show auction, \$402 Nov shows promo sales and BBQ, \$37.50 Membership)

Expenditure: \$1036 (\$1010 Petty cash & floats for Nov shows, \$26 VCA room hire)

Balance as at: 1.12.17 \$9176.62

### Statement of revenue December 2017

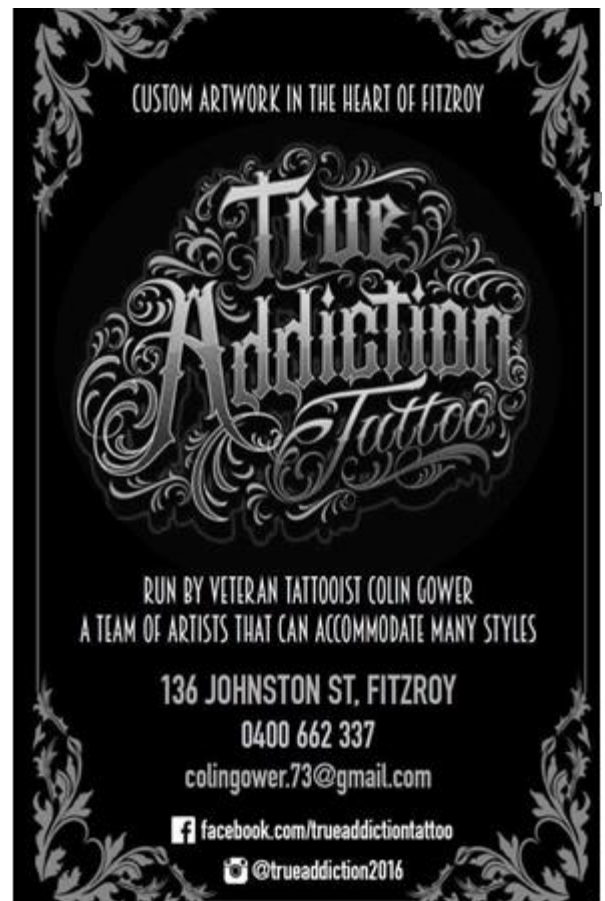
Balance as at: 1.12.17 \$9176.72

Revenue: \$80 (\$80 Auction)

Expenditure: \$1296.38 (VCA show levies Nov \$408, Auction

Balance as at: 1.1.18 \$7960.24

## **Thanks to our 2018 Sponsors**





## FROM DOGS VICTORIA

### **Improvements to Prefix Accreditation program.**

In 2018 Dogs Victoria will be developing a partnership with Kangan Institute, a Registered Training Organisation (RTO 3077), in order to provide course work and assessment for members wishing to attain their breeder's prefix. Members will have an opportunity to undertake an improved standard of learning about genetics, health, husbandry and regulation relevant to the breeding of dogs through Kangan Institute via a Dogs Victoria approved course. We will be developing the course and assessment in cooperation with Kangan's educators, and members successfully completing the course will be eligible to attain a breeder's prefix.

Additional benefits to our members include a boost to credibility through an externally accredited trainer, a move to online learning and assessment, improved turnaround times, and an opportunity to convert their prefix coursework and assessment into a full Certificate II qualification by undertaking some additional modules.

Dogs Victoria undertook a review of available RTO providers and selected Kangan Institute as the most suitable. It is important for us to continue to grow the standard of education for our members, as our Applicable Organisation status as granted under the Domestic Animals Act by the Minister for Agriculture has a strong emphasis on education. Members will notice an increase to the costs of the Prefix Accreditation Program in order for us to recover the expenses of this improvement. We believe that amortised over the life of a prefix, this additional cost represents a minimal impact to breeders. Dogs Victoria believes that providing access to a contemporary external training provider for members wishing to become breeders is setting a clear benchmark, and shows leadership in our expertise in animal husbandry and welfare.

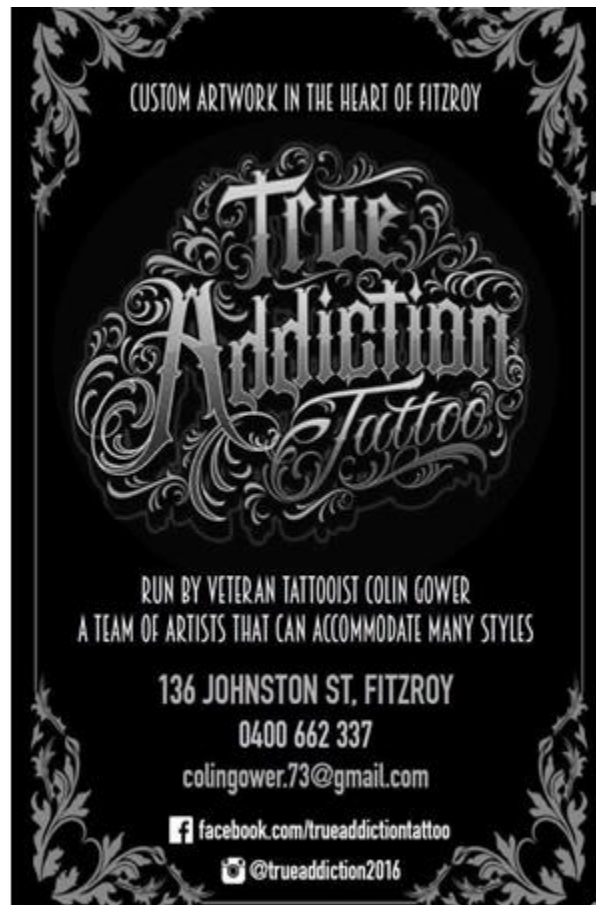
### **BARK FOR LIFE**

The fourth year of Bark For Life will take place on Sunday, October 28 from 10am to 2pm at Jells Park South (Ferntree Gully Road entrance), Wheelers Hill.

If the distance prevents members from being in attendance on the day, you can still register a team, which boosts funds to help Cancer Council Victoria fight back against cancer



## TRUE ADDICTION TATTOO – SPONSOR OF OUR MAY SHOW







The Bull Terrier made his debut in the days when dog fought dog in pre-arranged gladiatorial combat. His progenitors were the bulldogs of those days, crossed in all probability with the greyhound and the foxhound. An early example of the breed was Sir Walter Scott's "Camp", described by his master as "the cleverest dog I ever had".

His fondness for a fight has not left the Bull Terrier, but he is seldom the aggressor and is much esteemed as a family pet – although caution is necessary if a cat is a member of the domestic circle.

**THE BULL TERRIER CLUB OF VICTORIA INC.**