

sensational black masked fawn son of Cassidy, Ch Yakee For Your Eyes Only, CC, BOB, toy group and reserve BIS."

The 1992 breed judge was Mrs Liz Stannard, of the Shiarita affix, and she said of Got Wot It Takes (winning from junior): "Silver fawn in very good coat and fringes although not too much that you could not see his shapely body, low to ground, heavy bone, deep chest and large barrel ribs, level back, good hind action, high set tail, large masculine shallow head,

good pigmentation, open face, well cushioned cheeks, good nose placement and dark eyes."

The reserve group winner in 1991 was **Ch Pemyn Sheer Elegance at Tenling**. She was bred by Mrs Joan Cross and Miss Winifred Mee, and was owned by Miss Mee and Mrs Ann Tennant. Her sire was the BIS and multiple group winner **Ch Pekehuis Sir Guy** (also BOB 1987), and she was ex **Mejowin Regal**, a granddaughter of Ch Micklee Romeo. Sir Guy also went back to Romeo,

and was a grandson of **Ch Some Man of Lotusgrange** (BOB 1983).

Miss Mee had worked with Mrs Ethel Partridge, who had the Pekehuis kennel, almost since she had left school, and the affix was transferred to her on Mrs Partridge's death. Before Sir Guy, the most famous of the Pekehuis was his great-great-granddam **Ch St Aubrey Pekehuis Petula** who was exhibited by Miss Mee to win 37 CCs. Sir Guy was the last dog to be bred by Mrs Partridge.

The 1991 group judge was Mrs Pamela Cross Stern, and her notes on Sheer Elegance ran: "Small and well balanced with good rib spring, nicely bodied and boned, well made shallow head and moving with dignity, in lovely coat."

In 1993 the group winner was **Ch Stsanja Too Close for Comfort of Genderlee**. He was bred by Mr and Mrs Barry Offiler, by the Cassidy/Patent Pending son **Yakee The Charmer** ex **Ch Stsanja The Thought of You**,

and was owned by Mr Geoffrey Davies.

The breed was judged that year by Mr Nigel Aubrey-Jones who had started in the breed while living in Wales before emigrating to Canada, and he said of his BOB winner: "Fine headed fawn, great appealing expression, short thick neck. With his short thick set body and high tail carriage he looked every inch a champion as he walked around the ring. Has four good legs and plenty of coat and fringes."

## POMERANIAN

**T**HE STORY of the Pomeranian as a show dog in this country is rather confusing, for if we went back to the first show to give the breed classes, held in London in 1863, and looked at the dogs entered, our 1990s eye would call them German Spitz.

During the 30 years to the end of that century there had been selection for a smaller size by some breeders, and this gave rise to a breed called the Miniature Pomeranian which was shown alongside its larger cousin. From 1896 until 1915 there were two sets of CCs on offer, one for the Pomeranians and one for the Miniatures. It seems that the reduction in breeding and showing brought about by the first world war was a blow from which the Pomeranian did not recover, as none appeared at post war shows, and they even lost their name to the Miniatures which became the Pomeranian.

- 1891 No challenge classes  
1st equal (white) won by German Spitz  
1st (other than white) won by German Spitz  
1892 1st challenge class (1 point) won by German Spitz  
1893 No championship prizes  
1st challenge class (equal) won by German Spitz and by Black Boy



Ch Shelton Sable Atom.

- 1894 No championship prizes  
1st open (black) D: Ch Black Boy  
1st open (black) B: Queen Bee  
1st open (any other colour) Prince of Orange  
1st open (white) won by German Spitz  
1895 No championship prizes  
1st open (white) D: won by German Spitz  
1st open (white) B: won by German Spitz  
1st open (black) D: Ch Black Boy  
1st open (black) B: won by German Spitz  
1st open (any other colour) D: Pretty Boy II  
1st open (any other colour) B: Ch Tina  
1896 No championship prizes  
1st open (black Pomeranians) Erbprinz of Rozelle  
1st open (black) D: King Pippin  
1st open (black) B: Prairie Blossom  
1st open (white) D: won by German Spitz  
1st open (white) B: won by German Spitz  
1st open (any other colour) D: Prairie King  
1st open (any other colour) B: Ch Tina  
1897 D: Indian Prince  
B: Bayswater Madge  
1898 D: Ch Hatcham Nip  
B: Ch Tina

Ch The Sable Mite.

- 1899 D: Ch Hatcham Nip  
B: Ch Tina  
1900 D: Ch Little Billee Boy  
B: Wyndham Elf  
1901 D: King Gem  
B: Ch Tina  
1902 D: Ch Marland King  
B: Ch Gatacre Dainty Belle  
1903 D: Ch Boy Blue  
B: Ch Walkley Queenie  
1904 D: Mafeking of Rozelle  
B: Ch Golden Tina  
1905 D: Ch The Sable Mite  
D: Ch Shelton Sable Atom  
1906 D: Ch Shelton Sable Atom  
B: Ch Walkley Queenie  
1907 D: Ch The Sable Mite  
B: Ch Coldhurst Beauty  
1908 D: Ch Shelton Sable Atom  
B: May Bird  
1909 D: Ch Offley Honey Dew  
B: May Lady  
1910 D: Ch Shelton Mercury  
B: Dazzie  
1911 D: Pomeria Fire Fly  
B: Lady Patricia  
1912 D: Goldmine's Sunbeam  
B: Ch Much More  
1913 D: Ch Flaming June  
B: Ch Gatacre Twilight  
1914 D: Ch Flaming June  
B: Ch Offley Mite's Sunflower

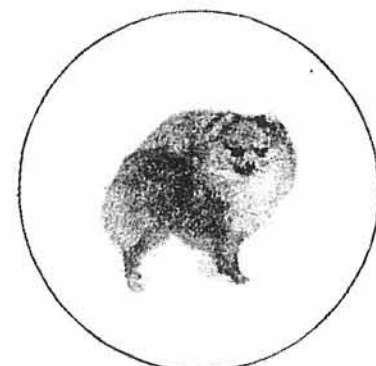


Ch Tina.

photo Fall

- 1915 D: Ch Homefarm Sable Atom  
B: Ch Trevorena  
1916 D: Ch Chiswick Authority  
B: Ch Flaming Desiree  
1917 D: Grenville Defiant  
B: Sunshine Midget  
1921 D: Ch Flashaway of Dara  
B: Ch Morceau D'or  
1922 D: Ch Magician of Melyd  
B: Ch Tweedledee of Vertikop  
1923 D: Ch Chiswick Sultan  
B: Ch Chetor Wee Topsy  
1924 D: Ch Erimus Bijue  
B: Ch Tweedledee of Vertikop  
1925 D: Ch Magician of Melyd  
B: Ch Lochryan Joy Bells  
1926 D: Ch Sunlight of Beaumanor  
B: Ch Perivale Dainty Jane  
1927 D: Lochryan Little One  
B: Erimus Wonder  
1928 D: Redhouse Golden King  
B: Goldwyn Mary Lou  
1929 D: Ch Woodfield Diamond King  
B: Ch Grenville Margherita  
1930 D: Ch Ihmit  
B: Ch Brilliant Imp  
1931 D: Ch Minegold Justit  
B: Choice  
1932 D: Ch Woodfield May King  
B: Ch Montacute Little Love  
1933 D: Ch Woodfield May King  
B: Ch Montacute Little Love  
1934 D: Ch Jewel of Blackacre  
B: Goldwyn Mitzi  
1935 D: Ch Minegold Itsacert  
B: Ch Minegold Isit  
1936 D: Ch Sherdon Superior  
B: Ch Sherdon Starette  
1937 D: Ch Colley Cinders  
B: Ch Sherdon Starette  
1938 D: Ch Minegold Ideal  
B: Riverleigh Enchantress  
1939 D: Ch Lochryan Wee Dear  
B: Golden Pippin  
1948 D: Ch Mighty Atom of Glenelg  
B: Ch Dimple of Hadleigh  
1950 D: Ch Hadleigh Brilliant Flame  
B: Ch Dimple of Hadleigh  
1951 D: Ch Wilmscot Wee Contender  
B: Ch Bonny Lassie of Hadleigh  
1952 D: Ch Preserves Live Wire  
B: Ch Preserves Mona Lisa  
1953 D: Ch Zambi of Zanow  
B: Ch Sweet Lady of Hadleigh  
1955 D: Ch Colwyns Toy Drum Major (reserve BIS first day)  
B: Ch Shamrock's Lovebird  
1956 D: Ch Shamrock's Choir Boy  
B: Ch Golden Venture

- 1957 D: Ch Peacehaven Sunstar  
B: Zarina of Zanow  
1958 D: Ch Wilmscot Wee Caress  
B: Ch Lady Fair of Hadleigh  
1959 D: Ch Suncroft Serenade  
B: Ch Lady Fair of Hadleigh (also reserve group)  
1960 Ch Pixietown Serenade of Hadleigh (also reserve BIS)  
B: Ch Pedimins Petite  
1961 D: Ch Sunmartin of Surridell  
B: Ch Pedimins Petite  
1962 D: Ch Rhapsody of Hadleigh  
B: Ch Annarbe Sunsalve of Hadleigh  
1963 D: Ch Gold Nugget of Hadleigh  
B: Andersley Fantasy of Aurum  
1964 D: Ch Silver Gem of Hadleigh  
B: Ch Hadleigh My Cherrie of Rosebert  
1965 D: Ch Silver Gem of Hadleigh (also reserve group)  
B: Ch Cynpeg Spring Fern  
1966 D: Ch Sweet Dreams of Aurum (also group)  
B: Ch Peachey of Hadleigh  
1967 D: Ch Honeybee of Hadleigh  
B: Ch Cynpeg Brengarth Bella Rosa



Ch Flashaway of Dara.

- 1968 D: Ch Linchow Lin-Tin  
B: Ch Vertona Shamrock's Joy Bells  
1969 D: Ch Hadleigh Mighty Atom  
B: Ch Pandora of Aurum (also group)  
1970 D: Ch Mosey the Menace of Vernilil  
B: Ch Misty of Marida  
1971 D: Ch Mosey the Menace of Vernilil (also reserve group)  
B: Ch Cynpeg's Gentle Thoughts  
1972 D: Ch Hadleigh Little Duke  
B: Ch Cynpeg's Inheritance (also reserve group)  
1973 D: Ch Haysholm's Willie Make It  
B: Ch Hadleigh Sweet Charmer  
1974 D: Ch Hadleigh Shining Star  
B: Ch Hadleigh Sweet Charmer  
1975 D: Ch Hadleigh Shining Star (also reserve group)  
B: Ch Hadleigh Sweet Charmer  
1976 D: Ch Aurum Solitaire  
B: Ch Hadleigh Honey Puff  
1977 D: Ch Rosskear Winter Wonderland  
B: Cosmic Dancer of Lireva  
1978 D: Ch Majada Sunnyboy at Katula  
B: Ch Cynpeg's Oriole (also reserve group)  
1979 D: Ch Hadleigh Pride of the Stars  
B: Ch Ringlands Gaiety Girl at Rosskear  
1980 D: Ch Gayroll Mighty Mouse  
B: Ch Wynwrights Jubilee Belle (also reserve group)



Ch Flaming June.

### TOYBOX Pomeranians

#### DOG CC WINNER 1995

Toybox dogs have won the CC at Crufts on 4 occasions

Show puppies available now

**EVE SMAIL**  
Almondhill, Dalkeith EH22 2PX  
Telephone/fax 0131 660 4963  
Mobile 0802 861 218



### THELBURN POMERANIANS

are proud to have achieved top honours at Crufts with three generations

**Ch SABLEWAYS SILVER STATESMAN AT THELBURN**  
Dog CC and BOB 1988

His son **Ch THELBURN OLIVER TWIST FROM LIREVA**  
Dog CC and BOB 1991 and 1992  
Owned and campaigned by the Cawtheras

His granddaughter **Ch THELBURN NO-NO-NANNETTE**  
Bitch CC and BOB 1995  
Owned and campaigned by Tina Holman

**THELMA ALSFORD**  
Sarina, Hillcrest Avenue, Queens Road  
Jersey, Channel Islands JE2 3FR Telephone 01534 30392



- 1981 D: \*Ch Mycariad Man in a Million at Wynwrights  
B: Ridgecross Pepsi Cola
- 1982 D: Ch Mycariad Man in a Million at Wynwrights  
B: \*Ch Cream Puff of Hakodate Mac-kawa
- 1983 D: \*Ch Daim of Sushimoto at Cygal  
B: Ch Speranza Red Ruby
- 1984 D: \*Ch Lireva's Shooting Star (also reserve BIS)  
B: Ch T'Saigons Diana
- 1985 D: \*Ch Derronill's Maxamillion  
B: Ch Rosskear's Triple Echo
- 1986 D: \*Ch Derronill's Maxamillion (also group)  
B: Ch Toybox Ginger Rogers
- 1987 D: Ch Derronill's Centurion  
B: \*Ch Toybox Ginger Rogers
- 1988 D: \*Ch Sableways Silver Statesman at Thelbern  
B: Ch Lirevas Bear Faced Lie
- 1989 D: \*Ch Cradarr Drummer Boy  
B: Ch Pomiroa Cream Puff
- 1990 D: Ch Speranza Gentleman Jim  
B: \*Ch Kerryhills Jasbrow of Pomanna
- 1991 D: \*Ch Thelbern Oliver Twist from Lireva  
B: Ch Ringways Door Mouse
- 1992 D: \*Ch Thelbern Oliver Twist from Lireva  
B: Ch Veltuds Scarlet-Ribbons
- 1993 D: \*Ch Veltuds Gee-I Guy  
B: Ch Pomlyn Little Jewel
- 1994 D: Ch Toybox Platignum Phantom  
B: \*Ch Vanwick Cover Girl
- 1995 D: Ch Emadale Sundancer at Sueacres  
B: \*Ch Thelbern No No Nannette

It is not always possible to work out what size a dog was from the records in the Stud Book, and this is important because a dog's breed depended on his size. I have done the best I can, but for example the awards at Crufts in 1904 and 1905 seem a muddle. Using the 1990s breed names, there were two 'German Spitz' and two Pomeranian CCs on offer each of these years but in 1904 the bitch CC for the 'German Spitz' went to a Pomeranian, and in 1905 the dog CC for the 'German Spitz' also went to a Pomeranian. The only explanation I can think of is that each of these years one Pomeranian had eaten too large a breakfast, went over the eight pound maximum and became a 'German Spitz' for the day!



Ch Minegold Ideal.

The 'German Spitz' winners are listed in the utility group supplement published two years ago.

The first two years that there were Crufts shows the 'German Spitz' took all the awards, but in 1893 the first prize was split between a 'German Spitz' and Mr E J Ireland's Pomeranian, Ch Black Boy. Black Boy was born in June 1890, being bred by Mrs Ireland, by Puck ex Ireland's Lulu. Apart from his wins at Crufts, each before the show became a championship show, his importance to the Pomeranian breed is as the first champion.

He gained his title by winning his third championship prize at Preston show in May 1894. His "dense black coat" was commended on, and he was considered "a small sturdy handsome dog" and "a decided asset to the breed for many of the noted winners of succeeding generations derived their qualities from him."

One of the most successful Pomeranians from before the turn of the century, and indeed the first bitch champion, was Miss A De

Pass' Ch Tina. When she was being shown there were hardly any sables and almost no orange dogs in the ring; black and chocolate brown were the most popular colours, and Ch Tina was one of the latter. She was bred by Mrs Addis, who was also the owner of the first Japanese Chin champion.

Tina won ten championship prizes in 1898 and '99, then the name of the award was altered to challenge certificate, and she won nine more. At this time there were very few BIS awards, and usually any award for "best champion in show" was for members of the society that was running the show. Tina was the winner of this at the Ladies Kennel Association, where not only was the competition restricted to the dogs of members, but only female exhibitors were able to enter dogs at the show.

Mrs Addis, Tina's breeder, had won this award before with her Japanese Chin, and was one of the original members of the Pomeranian Club, which was founded in 1891 at a meeting held at Crufts.

Tina won prizes at five Crufts shows and was by the black prize winner Bayswater Swell ex Kitty. She was described at the time as "5½ lb, stands ten inches high, and of a dark chocolate colour without any trace of shading. She is very short and compact in build, eyes and nose the same colour as her coat, ears small and carried close together. Her coat is



Ch Montacute Little Love.

very thick and outstanding, and the tail goes straight up the centre of her back and touches her head.

"Taken all round it may be said that this little pinch of perfection concentrates in her 88 ounces a greater volume of honours than any other canine celebrity in England."

At this time the Pomeranian was the most popular of the toy dogs, the Pekingese was still a relatively rare breed and it was to be another ten or so years before it became the most favoured of the ladies' companions. The 1898 Crufts catalogue demonstrates the popularity of the Pomeranian in the number of special prizes available for competition. There are listed ten challenge cups on offer, plus 11 half-guinea special prizes and innumerable spoons for the Pomeranian and the Pomeranian Miniature in all its colour varieties. The whites were mainly German Spitz, and there were black, browns and oranges, while the any other colour classes were filled with blues, sables and particolours.

Mafeking of Rozelle was a white with black patches who won the dog CC in 1904, though no actual particolour Pomeranian champion was made up. Mrs Parker wrote that "his head shape was noticeably good, with a pleasing expression and his coat extremely dense with a lovely plume."

Ch Hatcham Nip was a CC winner twice at Crufts, though he was of unknown pedigree. His owner was Mrs Marlow, though

he was later exported to the United States, and he was a black of "perfect type and grand coat".

Miss Chell was known for her whites, though the most successful of these were of German Spitz size. She bred Mrs Seaman's Ch Walkley Queenie, twice winner at Crufts. Queenie was by Belper Cheeky ex Belper Sadie, and was black in colour.

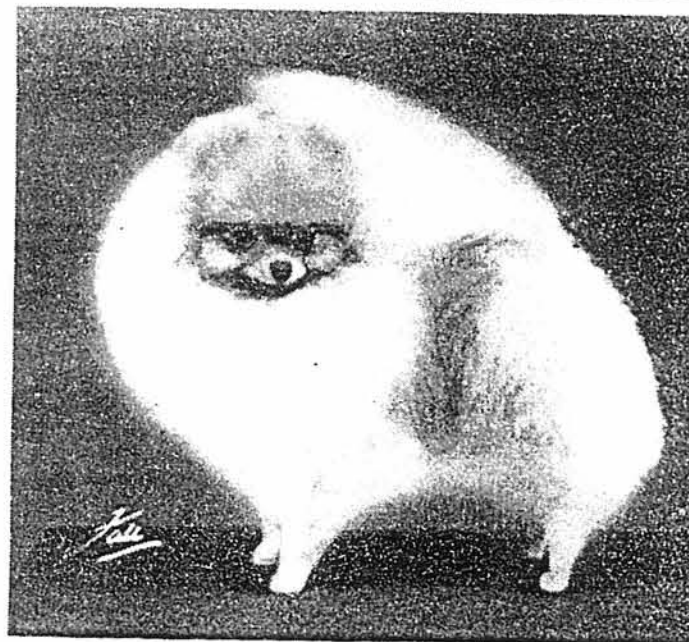
Ch Shelton Sable Atom won CCs at Crufts in 1905, '06 and '08. He was born in 1903 and was bred by Mr J Feilding, being by Little Nipper ex the blue bitch Cinderella, a granddaughter of Bayswater Swell. Cinderella was over eight lb in weight.

In 1907 the dog CC was won by his half brother, Ch The Sable Mite, and they were both winners in 1905, one as a Pomeranian and the other as a 'German Spitz'. Sable Atom and Sable Mite were both under eight lb in 1904 —



Ch Dimple of Hadleigh. photo Fall

Sable Mite winning a weight restricted class at Darlington in July 1904, and Sable Atom winning a similar class in the September. There was a similar situation in 1904 for the bitches Ch Gateacre Bilbury Belle and Ch Golden Tina. Sable Mite and Sable Atom were eventually both owned by Mrs Vale Nicholas, and as a pair were undefeated in brace classes.



Ch Lady Fair of Hadleigh.

Miss Barton's homebred Ch Flaming June won in 1913 and '14. He was a shaded sable by Ch Young Dragon Fly ex Aberdare Sable Duchess. Young Dragon Fly traced back to a stud dog called Aigburth Prince, who was also behind Ch Shelton Sable Atom through his dam.

Ch Flashaway of Dara won the dog CC at the first post-first world war show in 1921. He was an orange born in 1919, bred and owned by Miss L Wilson by Goldblaze of Dara ex Greygown of Dara. Goldblaze had been born in 1918, during the Kennel Club's ban on breeding, so he was ineligible to compete at British shows, though he later became an Indian champion. His sire, Sundawn of Dara, was also prevented from having a show career by this ruling.

The Dara kennels started with chocolates at the turn of the century, but in 1912 a shaded sable dog puppy was added, who was a grandson of Ch Young Dragon Fly. This puppy was registered as Dara Ace of Trumps, and he became the grandsire of Sundawn of Dara (whose mother was registered as Too Much, for she tipped the scales at 11½lb).

The Dara lines were important in the breeding of orange sables which by the 1920s were dominating the awards. A few people breeding blacks, but the colours were quite out of fashion. Mr Atherton specialised in black and his Ch Magician of M was twice a Crufts CC winner. This was bred by Mrs Barnes by F gate Magic ex Dinah of M. This kennel also did the double at Crufts in 1928 with a pair of blacks.

Ch Woodfield May King Ch Montacute Little Love the double at Crufts in 1932 '33. May King was considered the time "one of the loveliest of all time, marvellously shoddy, with tiny ears, the sweet face, a phenomenal coat plume of perfect texture and length; he adds to his other perfections the characteristic bounding Pomeranian action."

Looking at his photograph looks very far in advance of time, indeed at first I could believe this dog was born so long time ago — he would not be out of place in the ring today. son, Ch Sherdon Superior, BOB in 1936 doing the double

## POMLYN

### Pomeranians

Carefully bred for show and companions

### Ch POMLYN LITTLE JEWEL

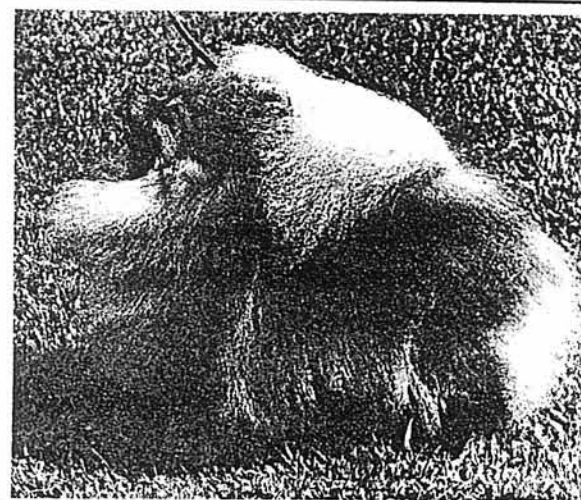
(Pomlyn Barn-a-Bee ex Affalon Cheeky Bee)

Gemma won her 5th CC at Crufts 1993

She is a double granddaughter of the late Ch GAYTROLL MIGHTY MOUSE who won his and our 1st CC at Crufts 1980

AT STUD: P Barn-a-Bee, res CC (orange) and his son P Just-In-Tyme (black)

Lovingly owned and bred by LYNN WEBSTER  
Rose Cottage Farm, Pockledge Lane  
Holymoorside, Chesterfield  
Derbyshire S42 7HL  
Telephone 01246 566059



## VELTUDS POMERANIANS

proudly presents

### Ch VELTUDS SCARLET RIBBONS

CC & BOS Crufts 1992, judged by breed specialist Jessica Newman

Also Ch VELTUDS GEE-I-GUY (photo)

CC & BOB Crufts 1993, judged by breed specialist the late Stuart Finley-Bissett, of the world famous Cygal kennel

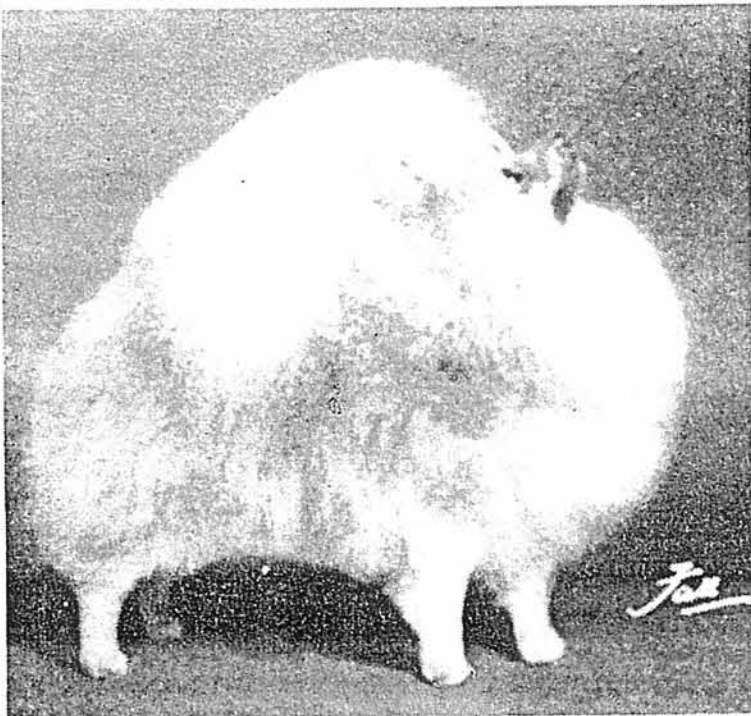
Our thanks to all our friends for their tremendous support

Proudly owned and bred by

Messrs JOHN POWELL and GARRY MEDCRAFT  
St Annes, Primrose Lane, Rhos  
Pontardawe, Swansea SA3 3ES  
Telephone 01792 830769







Ch Pixietown Serenade of Hadleigh.

photo Fall

his sister, **Ch Sherdon Starette**, (bred and owned by Mrs Bromehead ex **Sherdon Sequence**), who was herself BOB the next year.

May King was bred and owned by Mrs Jemson, by **Ch Woodfield Diamond King** (BOB 1929) ex **Waynflete Coral**. Diamond King's parents both originated in Mr H Young's Erimus kennel; his dam **Erinus Merry Dawn** was "a gorgeous orange teeming with quality and one of the heaviest coated of bitches", and his sire **Erinus Re-Echo** came from the Dara lines.

**Ch Montacute Little Love** "is a most charming little lady who owns a phenomenal coat and extremely short body. She is the essence of prettiness". Little Love won ten CCs, and was bred and owned by Mrs Holroyd, by **Peerless Blackacre** ex **Montacute Wee Wolfie**. The Blackacres went back to the Daras.

The 1938 BOB was Mrs T Bentley's **Ch Minegold Ideal**. Other Minegolds to do well at Crufts were **Ch Minegold Justit** (CC 1931, and also the winner of best non-sporting dog at Leeds in July 1931), **Ch Minegold Itsacert** (BOB 1935 and a son of Justit) and **Ch Minegold Isit** (sister to Itsacert, and bitch CC winner in 1935). Ideal was by **Manderroll**, a son of **Ch Minegold Justit**, ex **Colley Penelope**, bred by Mr Rollinson. Justit traced back to **Ch Flashaway of Dara**.

At the first two post-war shows Mrs Gladys Dyke's **Ch Dimple of Hadleigh** won the bitch CC. She was by **Bonny Boy of Hadleigh** ex **Hadleigh Golden Pat**, who was a daughter of Mrs Dyke's first Pomeranian **Eastney Madcap**. Madcap went to Mrs Dyke in 1938, and her sire was **Ch Eastney Red Boy**, who was made up that year. Red Boy was a grandson of **Ch Minegold Justit**.

The Hadleigh kennel is not only famous in Pomeranian circles, for with 65 champions bred there, and nine bought in (not to mention the many descended from Hadleigh stock), I think that Mrs Dyke is probably the top breeder, of a single breed, of all time. The Silvae Dachshunds covered more than one variety, and the honours the Sandylands gundogs collected were with more than just the Labradors.

The roll of Hadleigh champions started in 1948 with three, the first **Ch Hadleigh Honeybunch**, then the brother and sister **Ch Billy Button** and **Ch Dimple of Hadleigh**. As if starting with three champions in one year

was not enough, all three won groups in 1948, Honeybunch at Bath in May, Billy Button at Birmingham City in August and Dimple at the LKA in the November.

In 1955 there was no group system for judging BIS at Crufts, so all the BOB winners from the first day of the show competed for a BIS that day, who competed with the BIS the second day for the overall award. That year Mrs Buttery's homebred **Ch Colwyns Toy Drum Major** was reserve BIS the first day. He was by **Colwyns Christopher** ex **Josephine Josey**, and traced back to Sundawn of Dara, the grandsire of **Ch Flashaway of Dara**.

**Ch Lady Fair of Hadleigh** was reserve in the group in 1959. Though the Hadleigh champions started to appear just after the war the truly golden days for the kennel started in the 1960s. 1968 was the only year of that decade when there was just one Hadleigh gaining his title.

As Ann Winter of the Rosskears wrote in 1985: "From those days the Hadleigh kennel of Gladys Dyke built up a record which could find few challengers in any breed, having bred and owned two record holders (**Ch Hadleigh Shining Star** and **Ch Hadleigh Honey Puff**) and won well over 350 CCS."

"It would be impossible to single out the best of the many Hadleigh champions who were so close in type and even in quality, but one cannot help recall **Ch Sweet Lady of Hadleigh** who was the dam of seven champions (including **Ch Lady Fair of Hadleigh**)."

Sweet Lady holds the record as the top brood bitch in the breed, and what makes her even more special is that Pomeranian litters are small and some brood bitches don't even produce seven puppies let alone seven champions. She was by **Ch Hadleigh Brilliant Flame** (sire of three champions), himself by **Bonny Boy of Hadleigh**. As well as producing the record number of champions, Sweet Lady also found time to win three groups, and in 1954 was reserve BIS at WELKS and Birmingham City.

**Ch Lady Fair** not only had the breed's top dam as her mother, but her sire **Ch Zambo of Zanow** was the top sire in the breed with 12 champion offspring. In 1960 he was the sire of every Pomeranian made up.

That same year **Ch Pixietown Serenade of Hadleigh** was reserve BIS at Crufts. He had been reserve BIS at the LKA the pre-

vious November. He was born in 1958, bred by Mrs K Cross and initially owned by Mrs Dyke before being sold to Mrs R H Bellick from Bermuda. After going across the Atlantic he won the toy group at Westminster show in New York, the most prestigious show in the United States. He was by **Ch Live Wire of Potterbrook** ex **Passfield Peep-Bo**, and traced back to **Ch Flashaway of Dara**.

Mr Flavell wrote: "Mrs Dyke never hesitated to stress the fact that the main success of any kennel is to have a foundation of first class brood bitches. She is a believer in inbreeding when mating to the best bloodlines attainable providing the stock is sound and healthy to begin with. Added to this one must be prepared to devote unlimited time to the practical and scientific side of breeding, and from the results no one can dispute the fact that her methods have shown the ultimate success."



Ch Pedimins Petite.

photo Cooke

"Presentation has also paid a major part of the Hadleighs' success in the show ring and they always entered the ring carefully groomed and trimmed to perfection."

"All the winners up to the time that Mrs Dyke had to retire from showing had a background of well chosen ancestors. Nothing had been left to chance and quite a few kennels of today owe their success to Hadleigh bloodlines."

The bitch CC winner in 1960 and '61 was Mr Porter's homebred sable **Ch Pedimins Petite**. She was one of **Ch Zambo of Zanow's** 1960 champions, and her dam was **Contessa of Hadleigh**.

**Ch Silver Gem of Hadleigh** was reserve in the group in 1965, having won the dog CC in 1994. He was by **Ch Little Gent of Hadleigh**, who is second only to his sire in the table of top Pomeranian studs with nine champion offspring. Little Gent was brother to **Ch Lady Fair**, making him another of the top stud/top brood matings, and both Little Gent and Lady Fair were championship show group winners. And Silver Gem had two wins at this level as well. Homebred, he was ex **Tip-toes of Hadleigh**, a Zambo granddaughter.

The first Pomeranian to win the toy group at Crufts was Mrs and Miss Berney's **Sweet Dreams of Aurum**.



Pandora of Aurum.

photo Fall

**Aurum**. Sweet Dreams did not win his British title, for soon after his Crufts win he was exported to Japan. He was by the CC winning Little Gent son **Pompadour of Hadleigh** ex **Red Shoes of Aurum**.

The breed was judged by Mrs Winnie Barber, who putting him up from the post graduate class said of him: "Completely captivated me — my idea of what a Pom should be, beautiful in outline, all the requirements of head, eyes, ears, coat of good texture and plenty of it and with all the merriest showman."

Three years later Sweet Dreams' half sister won the group. She was **Pandora of Aurum**, by **Pompadour ex Bizarre of Aurum** (granddaughter of **Ch Pixietown Serenade of Hadleigh**). Pandora was a wolf sable, bred and owned by Mrs and Miss Berney.



Ch Silver Gem of Hadleigh.

photo Thompson



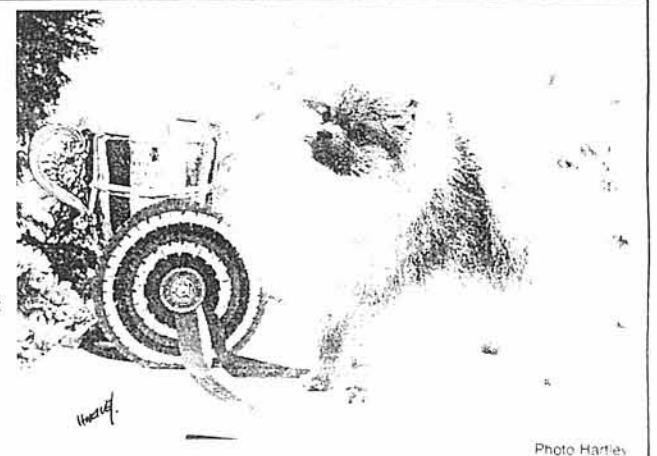
Sweet Dreams of Aurum.

photo Fall

## LIREVA POMERANIANS AT CRUFTS

- 1977 COSMIC DANCER OF LIREVA CC
- 1984 CH LIREVA'S SHOOTING STAR BOB, toy group and res BIS
- 1988 CH LIREVA'S BEAR-FACED LIE CC
- 1991 } Ch THELBURN OLIVER TWIST
- 1992 } FROM LIREVA BOB
- 1996 Judge Averil M Cawthera (Lireva)

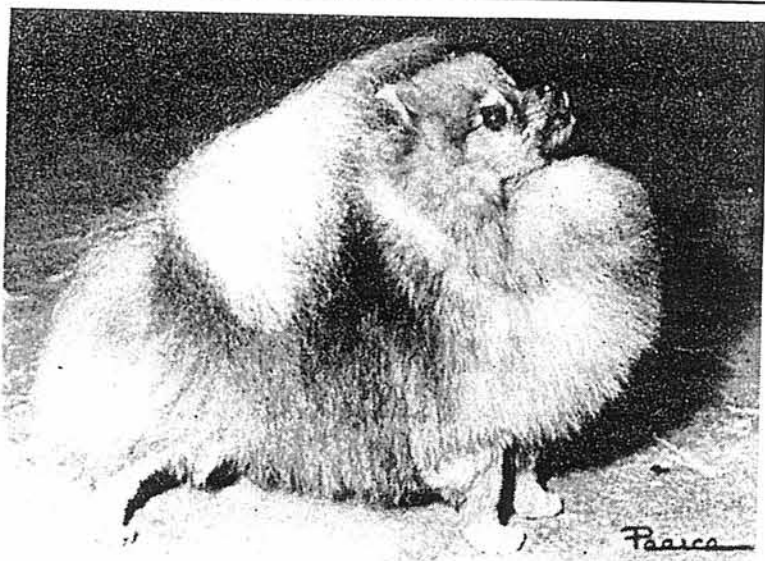
Telephone 01952 604298



Oliver — 1st time out with Averil BIS at Three Counties — one way to qualify!

Photo Hartley





Ch Mosey the Menace of Vernilil.

photo Pearce



Gladys Dyke with Ch Hadleigh Shining Star and Ch Hadleigh Sweet Charmer.

Ch Mosey the Menace of Vernilil won the dog CC in 1970 and '71, going on to reserve in the group the latter year. He was a multiple CC winner at one time holding the breed record for males and won BIS at Paignton in 1970, two reserve BIS awards and three further groups. He was by Billy's Lad of Vernilil ex Sweet Jeanie of Vernilil and traced back to the Hadleighs. He was bred and owned by Mrs Lilian Weinert.

The breed was judged in 1970 by Mr Stephen Young, who wrote of Moses: "A beautiful dog, lovely short back, compact, in grand coat, lovely skull, difficult to fault and moving superbly."

In 1972 another Pomeranian won reserve in the group. This was Miss Cynthia Harper's Ch Cynpeg's Inheritance, who was bred by her owner by Ch Cynpeg's Little Extra ex Ch Cynpeg's Ello Nickel. She was cream in colour and was born in 1970. She

traced back to Ch Zambo of Zanow and Ch Pixietown Serenade of Hadleigh.

The judge was the specialist Mr Bob Flavell, who said of Inheritance: "most exquisite and truly feminine light orange, sweet head and expression, tiny well placed ears, grand body, legs and feet."

Miss Harper was one of the few to rival Mrs Dyke in notching up top wins. Her first homebred champion was Ch Cynpegs Archers Bow (sire of six champions, and by Ch Cynpegs Zardi of Zanow the sire of seven, in his turn by the great Ch Zambo of Zanow), so the bloodlines were not that different from those of the Hadleighs. There were 11 groups won by five different Cynpeg's dogs, and three of these went on to win BIS, all at championship show level.

Ch Hadleigh Sweet Charmer was BOB in 1973 and the bitch CC winner in 1974 and '75. She was owned and bred by Mrs Dyke by Hadleigh Dancing Master ex Sweet Petal of Hadleigh, her dam being a daughter of Ch Hadleigh Little Aristocrat who was one of the breed's great stud dogs, siring eight champions, and was a son of Little Gent.

Ch Hadleigh Shining Star was twice BOB at Crufts, and in 1975 he was reserve in the group. Though he was very successful at



Ch Hadleigh Shining Star.

photo Pearce



Bob Flavell with Ch Wynwrights Jubilee Belle.

group level he never won BIS at a championship show, coming close at both WELKS and Bath in 1975 with reserve BIS wins. He held the breed record at one time with 34 CCs. He was by Ch Hadleigh Starlight ex Hadleigh Honey-sweet, bred and owned by Mrs Dyke, and tracing back to Zambo and Little Model.

Mr Jack Huitson gave the Hadleigh pair the double in 1975 writing: "Open dog, 1 Ch Hadleigh Shining Star, orange looking at his best, sweet head, small ears well placed, fine bone, good feet, lovely plume, showed and moved well."

"Open bitch, 1 Ch Hadleigh Sweet Charmer, orange, coming into lovely bloom, sweet head, lovely plume well set, pulled herself together and moved and showed well, good legs and feet."

One of the most successful of the Cynpegs was Ch Oriole, who was reserve in the group at Crufts 1978, but had previously been BIS at Darlington in 1977, plus another four group wins. She was bred and owned by Miss Harper, by another of the breed's great stud dogs, Ch Saymar The Saint (five champion offspring) ex Cynpeg's Morning Glory. The Saint was a son of Ch Cynpeg's Little Extra.

Oriole was the top Pomeranian in 1977, but in 1979 Ch Wynwrights Jubilee Belle was not only the top of her breed, but the top toy. Between May 1979 and March 1980 she won nine groups, going on to reserve BIS four times, and was BIS at Birmingham National and Driffield in 1979. At Crufts 1980 she was reserve in the group.

She was bred and owned by Mrs Betty Flavell, who was a cousin of Miss Harper and based her kennel on Cynpegs bloodlines. Jubilee Belle was by Saymar the Vital Spark ex Ch Wynwrights Alcindoro.

Mr Flavell handled his wife's little bitch to her Crufts win. He had been a highly successful Pomeranian breeder in his own right using the Wilmscote affix, before his marriage, his first champion being the 1951 BOB, Ch Wilmscote Wee Contender.

The breed judge in 1980 was Mrs Jenny Shrewsbury, who noted: "I was not disappointed on handling my CC and BOB winner, I can say no more than most already know, she is of the highest quality and type along with personality and excellent showmanship, a true representative of the breed, a great showlady."

Mrs Flavell's Ch Mycariad Man in a Million at Wynwrights won two Crufts CCs. He was bred by Miss Vera Childs, by Ch Ringlands Ring O Gold at Rosskear ex Caesarea Solitaire. Ring O Gold was a grandson of Mrs Winter's Ch Wynwrights Mid Winter Boy, a multiple group winner and the sire of two champions. Mid Winter Boy was a grandson of Ch Cynpeg's Archers Bow, and he had been top toy 1973.



Ch Cynpegs Oriole.

photo Pearce



Averil Cawthera-Purdy with Ch Lireva's Shooting Star; Lady Forwood; Gwen Broadley, group judge, Crufts 1984.

photo Dalton

Mrs Winter was the breed judge in 1981, and noted: "Outstanding small deep orange dog of the highest quality and my idea of classic breed type. Delightful head and expression, neat muzzle, tiny ears and keen dark eyes, super legs and feet, solid little body underneath his correctly textured and prepared coat, stands four square at all times, moving so soundly."

The top toy in 1983 was Mrs Averil Cawthera's homebred Ch Lireva's Shooting Star. The DOG WORLD article on him at this time told how "in 1977, a very young lady took her mother's Pomeranian, Cosmic Dancer at Lireva, into the ring at Crufts, against all the breed's great kennels, and beat them all to win the CC from Mrs Yve Bentinck. From then on Mrs Averil Cawthera and

her daughter, also Averil, have shown fearlessly in this breed where many of the senior experts are hard to get past, have done consistently well and made up champions, and now they have made the very top.

"Some years ago Mrs Pauline Gibbs of the Montravia kennels decided to add Pomeranians to her kennel which is famous in so many breeds. After a while, though, she found that she was overstocked so she contacted the Cawtheras whom she knew to be building up their kennel. Well bred bitches being difficult to obtain, they jumped at the chance, especially as one of the three on offer was sired by a dog from Mrs Gladys Dyke's legendary and much sought after Hadleigh strain."

This bitch was Montravia



Carl Sparrow with Ch Derronill's Maxamillion; Baroness Trumpington; Audrey Dallison, group judge, Crufts 1986.





**Ch Mycariad Man in a Million at Wynwrights.**  
photo McFarlane

**Golden Star**, daughter of **Hadleigh Honeystar** and granddaughter of **Ch Hadleigh Starlight**. When mated to the Cawtheras' own **Pippitty Bo of Lireva** she produced **Shooting Star**. His year at Crufts was in 1984, when he not only won the group, but was reserve BIS as well.

The BIS judge was Mrs Molly Garrish, and she commented: "A little beauty, very sound and full of character — at one stage a little too much for his handler's peace of

mind when he decided to do his own thing, but when it came to the crunch he steadied down and moved beautifully to win the reserve spot."

Mr Derek Hill's homebred **Ch Derronill's Maxamillion** won the group at Crufts 1986, and he was the top stud dog in 1986, '87 and '88. He was by **Cygals Gingerbread Man of Derronill** ex **Cygals Sweet and Lovely**.

Mr Stuart Finley-Bissett's **Cygals** were based on Wilmscote breeding, though his most famous champion was the Japanese import, **Ch Daim of Sushimoto at Cygal**, and his pedigree was about three quarters Hadleigh. Some very good Pomeranians were exported to Japan, while Mrs Dyke imported **Cream Puff of Hakodate Maekawa** to take her British title with BOB at Crufts 1982. Daim was BOB in 1983.

The group judge in 1986 was Mrs Audrey Dallison, who wrote: "Today this dog never put a foot

wrong, he showed like a bomb from the moment he entered the ring. He has the most beautiful head and expression."

**Ch Toybox Ginger Rogers** won two Crufts CCs. She was the first of Miss Eve Smail's Toybox champions, and was a group winner with 20 CCs. She was by **Ablench Marshmallow of Andersley** (who had a Cygal sire) ex **Toybox Moonlight Serenade**. Ginger Rogers was the top Pomeranian in 1987.



**Ch Toybox Ginger Rogers.**  
photo Dalton

Mrs Flavell gave her the 1987 CC, noting that she was the "star of the day, she had everything I was looking for, a real true perky Pom. Her bright orange coat was in full bloom and presented in immaculate condition, she moved round the ring like a champion should and I had no hesitation in giving her the CC and BOB and she did the breed proud in the big ring being out in the last six."

In 1991 and '92 a descendant of **Ch Lireva's Shooting Star** was BOB. He was Mrs Cawthera's BIS winner **Ch Thelbern Oliver Twist from Lireva**, bred by Mrs Thelma Alsford whose Thelbern Pomeranians have had an impressive impact on the breed considering they are based in the Channel Islands. Oliver Twist's sire was the 1988 BOB, **Ch Sableways Silver Statesman at Thelbern**, and his dam was **Thelbern Chit-Chat**.

Mr Hill judged in 1991, commenting on Oliver Twist: "Excep-



**Ch Thelbern Oliver Twist from Lireva.**  
photo Hartley

tionally well balanced orange sable. Little out of coat on the day but with plenty to pass the test for quality and to complement the loveliest plume which completes the picture of balance. Stood four square, showed to advantage and moved with correct stride, beautifully proportioned head, well set ears and eyes, correct wedge shaped muzzle, sweet and alert expression."